

CHARACTERISTICS:

CONTACT ARRANGEMENT ----- S.P.D.T.
 ACTUATION FORCE ----- 35 OZ. MAX.
 RELEASE FORCE ----- 4 OZ. MIN.
 PRETRAVEL ----- .250 MAX.
 MOVEMENT DIFFERENTIAL ----- .050 MAX.
 OVERTRAVEL ----- .015 MIN.
 LIFE AT RATED LOAD ----- 25,000 CYCLES
 AMBIENT TEMPERATURE RANGE ----- -65°F TO +275°F
 DIELECTRIC STRENGTH ACROSS:
 OPEN TERMINALS ----- 800 VRMS (5 SEC.)
 TERMINALS TO CASE ----- 1000 VRMS (5 SEC.)
 MILLIVOLT DROP AT 1 AMP (-01 ONLY) -- .040 VOLTS
 SEAL ----- CLASS "5" HERMETIC PER MIL-S-8805

MAX. ALLOWED LEAKAGE ----- 1×10^{-8} STD. CC HE/SEC.
 BACK FILL ----- DRY NITROGEN
 FORCE ALLOWED ON TOP OF ACTUATOR --- 5 LBS.

SEAL ----- CLASS "5" HERMETIC

CURRENT CAPACITY

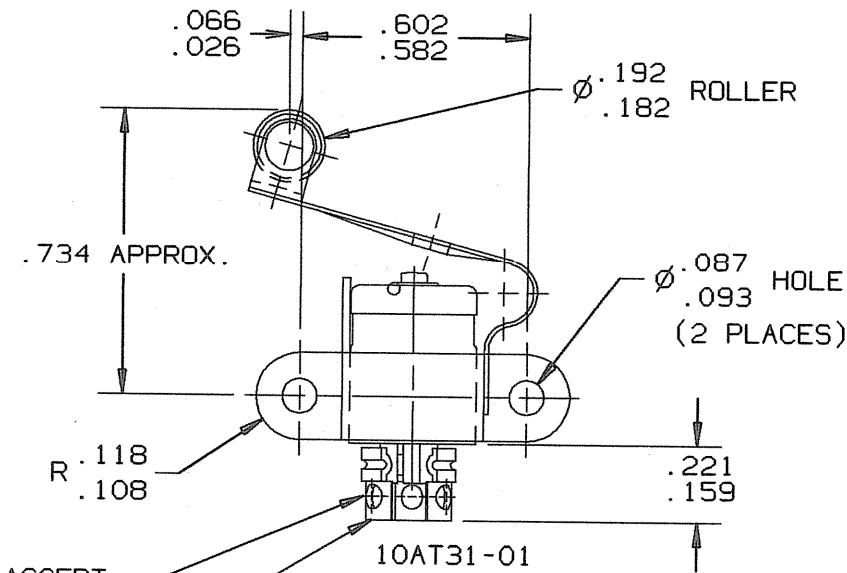
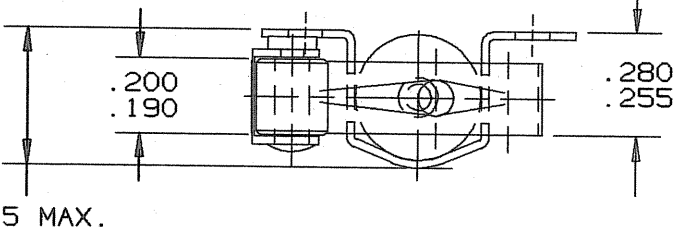
SEA LEVEL AND 70,000 FT. ALTITUDE	
LOAD	28 VOLTS DC
RESISTIVE	4 AMPS
INDUCTIVE	1 AMP
LAMP	2 AMPS

SHOCK RESISTANCE

WITHOUT CONTACT CHATTER ----- 200 G's
 VIBRATION RESISTANCE *(55-2000 CPS)
 WITHOUT CONTACT CHATTER ----- 65 G's
 WEIGHT (10AT31-01) ----- 4 GRAMS

*ACTUATION ARM MUST BE DEPRESSED A MINIMUM OF .025" FROM THE FREE POSITION TO PREVENT LARGE AMPLITUDE RESONANT VIBRATION.

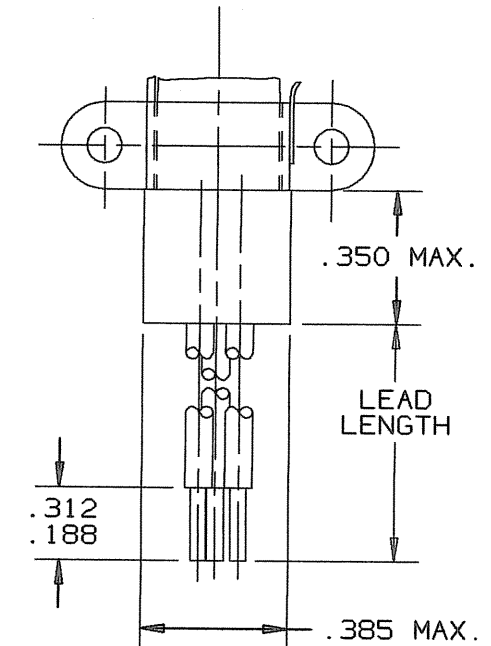
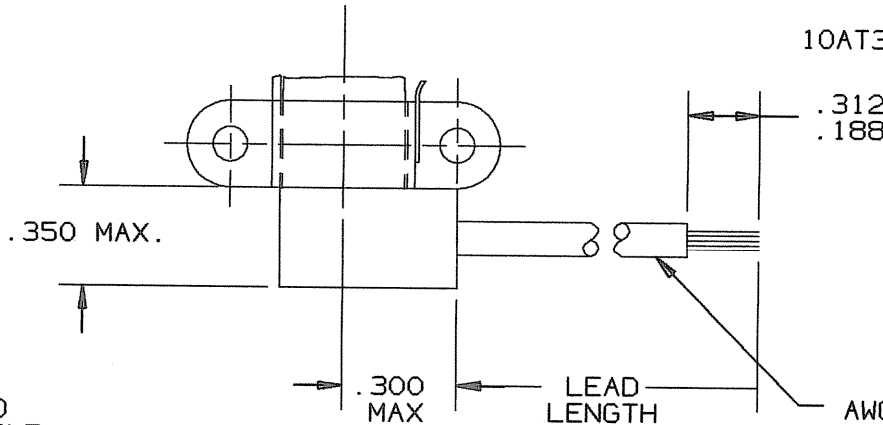
10AT	31-	PART NUMBER EXAMPLE		
		0	1	-1
BASIC SWITCH	ENVELOPE DRAWING	0 = SPDT 1 = SPST-NC 2 = SPST-NO	1=NO LEADS 2=LEADS PARALLEL TO AXIS OF SWITCH 3=LEADS AT RIGHT ANGLE TO AXIS OF SWITCH	1 = 6" MIN. 2 = 12" MIN. 3 = 18" MIN. 4 = 24" MIN. 5 = 30" MIN. 6 = 36" MIN. 7 = 42" MIN. 8 = 48" MIN. 9 = 60" MIN. 10 = 72" MIN.



TERMINAL TO ACCEPT
 1(ONE) #18 AWG
 STRANDED WIRE

TERMINAL IDENTIFICATION
 (ON GLASS)
 GREEN - COM.
 PINK - N.O.
 BLACK - N.C.

* SEE LEAD LENGTH TABLE



10AT31-02-*

10AT31-03-*

AWG #20 WIRE LEADS PER MIL-W-22759/9
 CODED:
 GREEN - COM.
 RED - N.O.
 BLACK - N.C.

SUPERSEDES DWG. 10AT31 REV."K", DATED 4-8-92

REVISIONS					
ZONE	LTR	DESCRIPTION	PROJ.# 1005	DATE	APPROVED
C4	L	1: 4 AMPS WAS 7 AMPS	CRM21201, CFF	10-12-95	J.A.F.

UNLESS OTHERWISE SPECIFIED DIMENSIONS ARE IN INCHES		DRAWN ED JORGE	DATE 1-18-90	Q13	P18	P3-2
TOLERANCES ON FRACTIONS DECIMALS ANGLES		ENGINEER P.D. SAMPSON	4-13-92	TEXAS INSTRUMENTS ATTLEBORO, MASSACHUSETTS 02703 KLIXON CONTROL PRODUCTS DIVISION		
MATERIAL		APPROVED		TITLE HERMETICALLY SEALED S.P.S.T. OR S.P.D.T. SWITCH ROLLER-LEAF ACTUATED ENVELOPE DRAWING		
SIGNATURES ON FILE. REFER TO ELECTRONIC CHANGE NOTICE.		APPROVED		SIZE B	CODE IDENT NO. 82647	10AT31