

4

3

2

1

ZONE	REV.	REVISION DESCRIPTION	ECN NO.	DATE
B4	G	UNDER CHARACTERISTICS, "THIS SWITCH MEETS THE ENVIRONMENTAL REQUIREMENTS OF M8805/74-041." WAS "THIS SWITCH MEETS THE REQUIREMENTS OF M8805/74-016."; GML	ECN0050713	17-APR-2009

CHARACTERISTICS:

CONTACT ARRANGEMENT -----	S.P.S.T.
ACTUATION FORCE -----	7.0 LBS MAX.
RELEASE FORCE -----	1.5 LBS MIN.
PRETRAVEL -----	.020 MAX.
MOVEMENT DIFFERENTIAL -----	.005 MAX.
OVERTRAVEL -----	.125 MIN.
LIFE AT RATED LOAD -----	25,000 CYCLES
AMBIENT RANGE -----	-65°F. TO +275°F
DIELECTRIC STRENGTH ACROSS:	
OPEN TERMINALS -----	800 VRMS (5 SEC.)
TERMINALS TO CASE -----	1000 VRMS (5 SEC.)
VOLTAGE DROP AT 1 AMP -----	.040 PLUS .021 PER FOOT OF LEAD
SEAL -----	CLASS 5 (HERMETIC) PER MIL-S-8805

MAX. ALLOWED LEAKAGE -----	1 X 10 ⁻⁸ STD CC He/Sec.
BACKFILL -----	DRY NITROGEN
MAX. FORCE ALLOWED ON TOP OF ACTUATOR ---	30 LBS

CURRENT CAPACITY:
SEA LEVEL AND 70,000 FT. ALTITUDE

LOAD -----	28 VOLTS D.C.
RESISTIVE -----	5 AMPS
INDUCTIVE -----	1 AMP
LAMP -----	2 AMPS

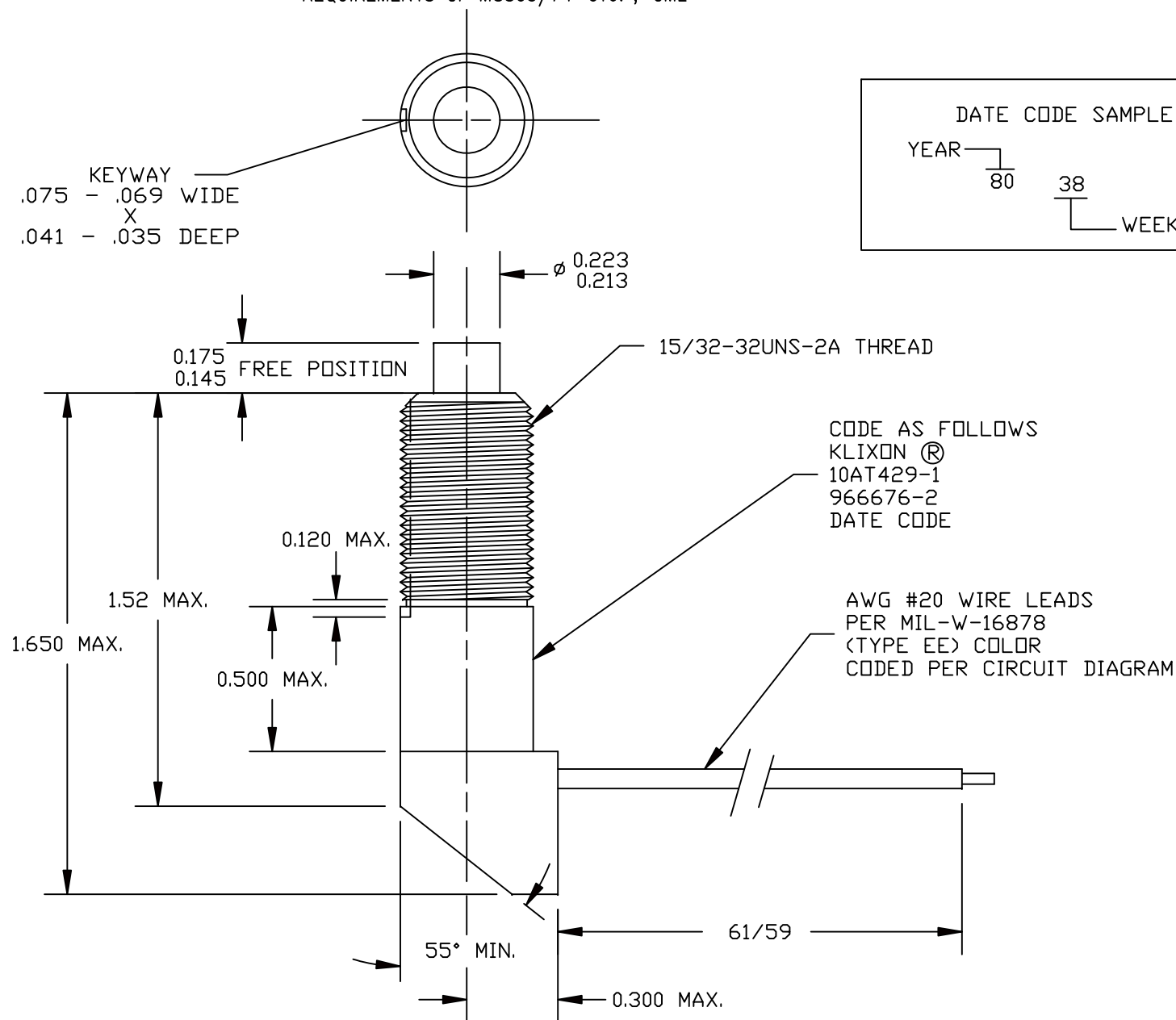
SHOCK RESISTANCE	
WITHOUT CONTACT CHATTER -----	200 G'S
VIBRATION RESISTANCE (55-2000 HZ)	
WITHOUT CONTACT CHATTER -----	65 G'S
WEIGHT (INCLUDING HARDWARE) -----	1.0 OZ. PLUS .10 OZ. PER LEAD FOOT OF WIRE

THIS SWITCH MEETS THE ENVIRONMENTAL REQUIREMENTS OF M8805/74-041.

SPECIAL MOUNTING NUTS USED.

MOUNTING HARDWARE: ITEM	REQUIRED	DESC.
HEX NUT	(2)	MS21340-04
INTERNAL LOCK WASHER	(1)	MS35333-121
KEY WASHER	(1)	MS25081-C4

CIRCUIT DIAGRAM



DATE CODE SAMPLE
YEAR 80 WEEK 38

CODE AS FOLLOWS
KLIXON®
10AT429-1
966676-2
DATE CODE
AWG #20 WIRE LEADS
PER MIL-W-16878
(TYPE EE) COLOR
CODED PER CIRCUIT DIAGRAM

FOR REFERENCE ONLY, CHECK LATEST REVISION BEFORE USE.
PARTS MADE TO THIS PRINT MUST CONFORM TO E9898 REV. E

DRAWN D.STAPLES DATE 22-OCT-1980	SENSATA TECHNOLOGIES PROPRIETARY AND CONFIDENTIAL. NEITHER THIS PRINT NOR THE INFORMATION CONTAINED HEREON IS TO BE USED AGAINST THE INTERESTS OF SENSATA TECHNOLOGIES OR AGAINST THE INTERESTS OF ANY OF ITS AFFILIATED COMPANIES OR WHOLLY OWNED SUBSIDIARIES.
ENGINEER L.KLEVEN DATE 23-OCT-1980	
APPROVED	UNLESS OTHERWISE SPECIFIED DIMENSIONS ARE IN INCHES TOLERANCES DECIMALS ANGLES
DATE	DO NOT SCALE DRAWING
APPROVED	
DATE	THIRD ANGLE PROJECTION



529 PLEASANT STREET
P.O. BOX 2964
ATTLEBORO, MA 02703

TITLE
PLUNGER ACTUATED SWITCH
ENVELOPE
DRAWING

SIZE B	DWG NO. 10AT429-1	REV. G
SCALE 2:1	AUTOCAD	SHEET 1 OF 1

4

3

2

1

DEVICE:

PROJECT: