



[Distributor Login](#)

[Check Distributor Stock](#)

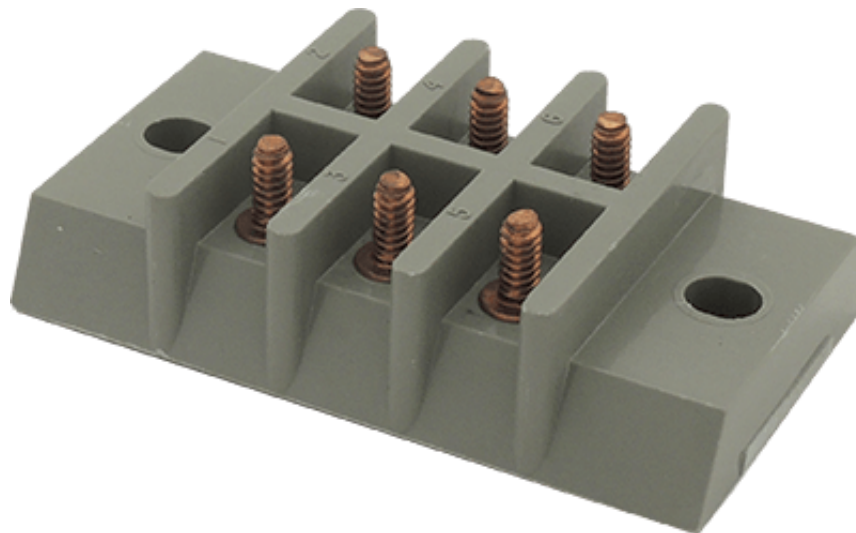
[Locate a Distributor](#)

Search By Catalog Number



[Home](#) > [Terminal Blocks](#) > Military - Navy Class

Navy Class (A-A-59125) / (MIL-T-55164)



6TB06F

Notes

Molded material is MAI-60 in accordance with MIL-M-14 (Molded material is GDI30F).

Nuts and connectors are provided when appropriate. They are unplated brass and shipped unassembled.

A-A-59125 superseded MIL-T-55164-C in 1997.

These terminal blocks are compliant to the A-A-59125 standard and are constructed to meet both standards.

View PDF below for Catalog Numbers and drawings:

[Navy Terminal Blocks Catalog Section](#)

Navy Class - A-A-59125 / MIL-T-55164

A-A-59125/MIL-T-55164 Information		Terminal Type	Voltage		Current	Wire & Lug				
Class	Spec #		Max Rated	Dielectric with Test	Max Rated	Screw Size	REMD Max Wire Size	MS17143 Lug #	Max Lug Width	RECMD Torque Lb-In (N-M)
3TB	/9	Single Stud Single Row	600V RMS	2000V RMS	45 AMP 60Hz	#8	#10 AWG	-3	0.395"	16-18

4TB	/10	Single Stud Double Row	600V RMS	2200V RMS	40 AMP 60Hz	#8	#12 AWG	-3	0.395"	16-18
5TB	/11	Feed Thru Stud Single Row	600V RMS	2200V RMS	50 AMP 60Hz	#8	#10 AWG	-3	0.395"	16-18
6TB	/12	Single Stud Double Row	600V RMS	2200V RMS	30 AMP 60Hz	#6	#14 AWG	-5	0.307"	10-12
7TB	/13	Feed Thru Stud Single Row	600V RMS	2200V RMS	40 AMP 60Hz	#6	#12 AWG	-6	0.307"	10-12
8TB	/14	Double Stud Double Row	300V RMS	2200V RMS	30 AMP 60Hz	#5	#14 AWG	-11	0.282"	8-10
9TB	/15	Single Stud Single Row	300V RMS	1500V RMS	35 AMP 60Hz	#6	#12 AWG	--	0.307"	10-12
10TB	/16	Single Stud Double Row	600V RMS	2200V RMS	30 AMP 60Hz	#6	#14 AWG	--	0.242"	10-12
11TB	/17	Feed Thru Stud Single Row	600V RMS	2200V RMS	40 AMP 60Hz	#6	#12 AWG	-15	0.242"	10-12
15TB	/19	Single Stud Double Row	600V RMS	2200V RMS	30 AMP 60Hz	#8	#14 AWG	-8	0.307"	16-18
16TB	/20	Single Stud Double Row	1000V RMS	3000V RMS	40 AMP 60Hz	#8	#12 AWG	-3	0.395"	16-18
17TB	/21	Double Stud Double Row	600V RMS	2200V RMS	40 AMP 60Hz	#6	#12 AWG	-3	0.395"	10-12
25TB	/23	Single Stud Single Row	300V RMS	1500V RMS	25 AMP 60Hz	#4	#14 AWG	-17	0.242"	6-8
26TB	/24	Double Stud Double Row	300V RMS	1500V RMS	20 AMP 60Hz	#4	#16 AWG	-20	0.242"	6-8

CONTACT

Marathon Special Products
 427 Van Camp Road
 P.O. Box 468
 Bowling Green, Ohio 43402

tel: 419-352-8441
 fax: 419-352-0875
 email: marketing@marathonsp.com

CUSTOMER SERVICE HOURS

Mon-Fri 8am-5pm EST

LINKS

[About Us](#)

[Contact Us](#)

[Terms & Conditions](#)

[Locate a Distributor](#)

ABOUT

Marathon Special Products is an industry leader for supplying power blocks, terminal blocks, and fuse holders in North America. We've achieved this by providing one of the broadest line offerings with various sizes, terminal styles, electrical ratings and features.

