



**MICRO SWITCH**

FREEPORT, ILLINOIS, U.S.A.  
A DIVISION OF HONEYWELL

FED. MFG. CODE 91929

# SWITCH - BASIC

CATALOG LISTING

## ISE61-T

ISE61-T

REPLACES

PR-6814

RELEASE NO

DRAWING NUMBER

ISSUE

4

CHECK

REVISIONS

A	CO-34213
J A L	24 SEPT 74
B	PR-6814
J A L	4 NOV 77
C	CO 56693
J A S	25 JAN 85

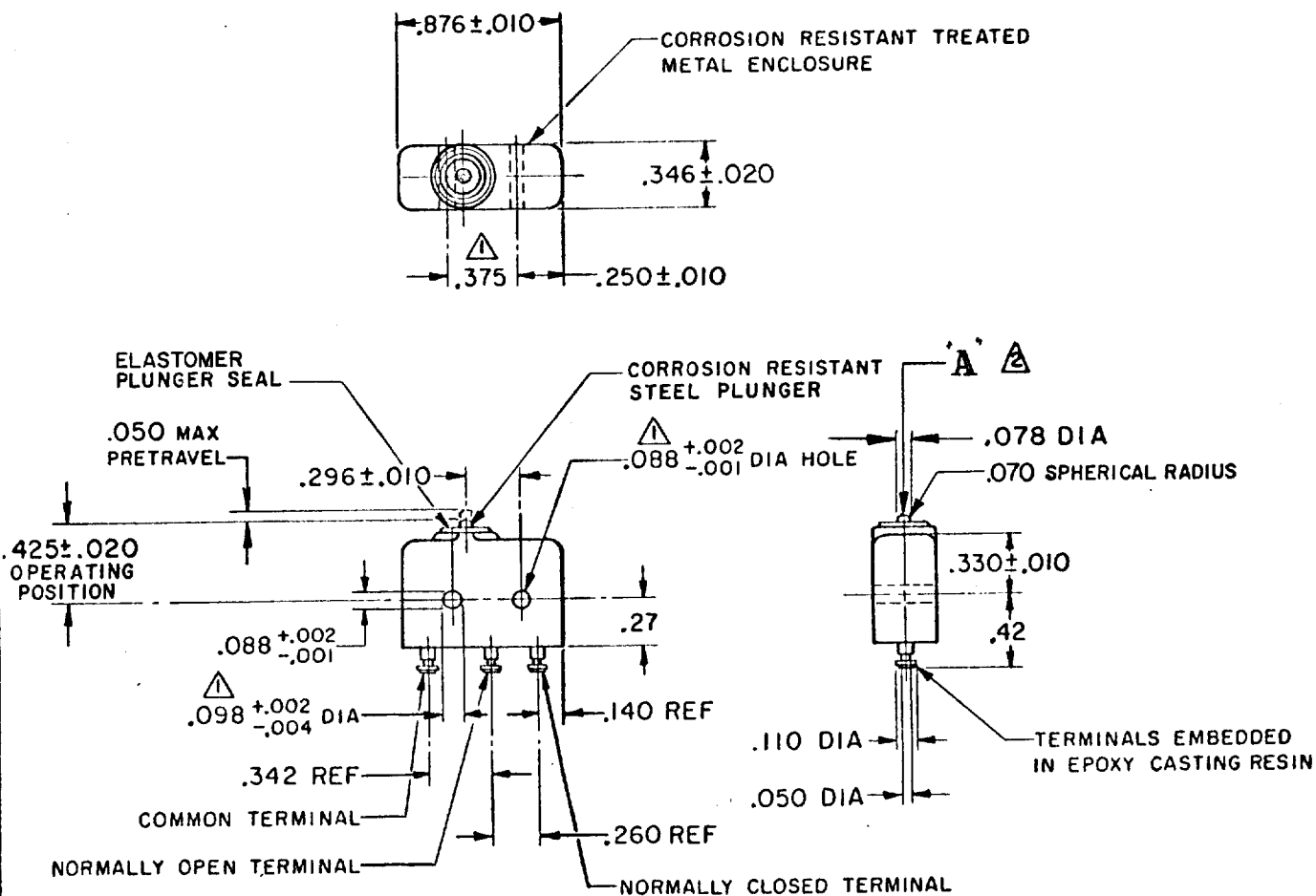
CHECK

DRAW 17 NOV 71

CHECK

DRAW 16 NOV 71

FO-50376



NOTE -

- ▲ MOUNTING HOLES WILL ACCEPT PINS OR SCREWS OF .087 MAX DIA ON  $.375 \pm .002$  CENTERS
- ▲ ACTUATION IN LINE WITH ARROW ▲ IS RECOMMENDED
- 3-BASIC SWITCH HAS MATING CONTACT SURFACES OF 24K SOLID GOLD OVERLAY

THIS DRAWING COVERS A PROPRIETARY ITEM AND IS THE PROPERTY OF MICRO SWITCH, A DIVISION OF MINNEAPOLIS-HONEYWELL REGULATOR CO. THIS DRAWING IS NOT TO BE COPIED OR USED WITHOUT THE APPROVAL OF MICRO SWITCH.

CHARACTERISTICS	ELECTRICAL DATA	SCALE FULL
OPERATING FORCE ——— 5-17 OZ	CONTACT ARRANGEMENT S P D T	DO NOT SCALE PRINT
RELEASE FORCE ——— 4 OZ MIN	30 VDC RATING	UNLESS OTHERWISE NOTED
RELEASE TRAVEL ——— .004 MIN	INDUCTIVE ——— SEA LEVEL ——— 1/2 AMP	DIMENSIONS ARE IN INCHES
DIFFERENTIAL TRAVEL ——— .004 MAX	INDUCTIVE ——— 50,000 FT ——— 1/2 AMP	<b>TOLERANCES ARE:</b>
OVERTRAVEL ——— .003 MIN	RESISTIVE ——— SEA LEVEL ——— 1 AMP	ONE PLACE (.0) ±.030
	RESISTIVE ——— 50,000 FT ——— 1 AMP	TWO PLACE (.00) ±.015
	MAX INRUSH ——— 2 AMP	THREE PLACE (.000) ±.005
		ANGLES ±
		WEIGHT .26 OZ MAX