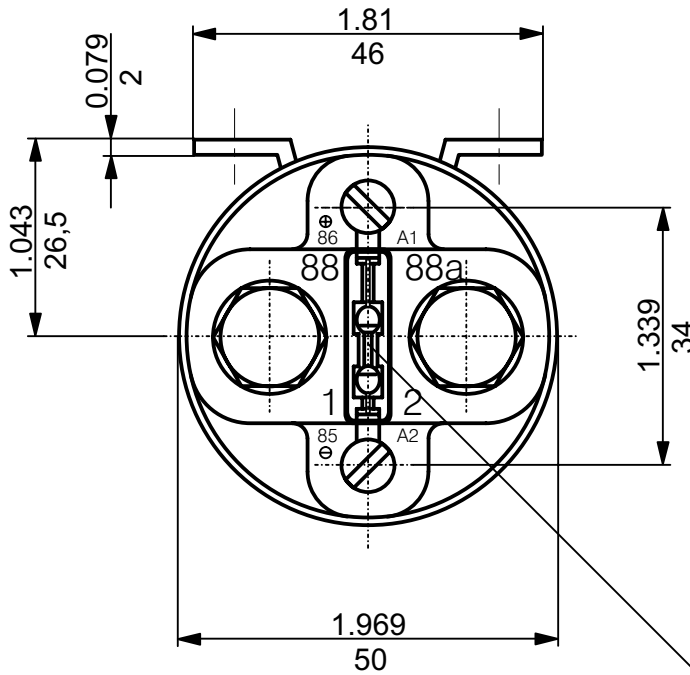
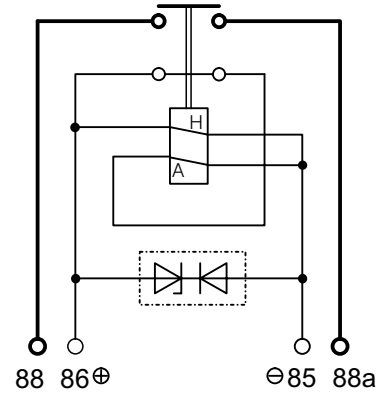


300 AMP. POWER RELAY (28 VDC)
STANDARD SIDE MOUNTING LIGHT WEIGHT
ENVIRONMENTALLY SEALED

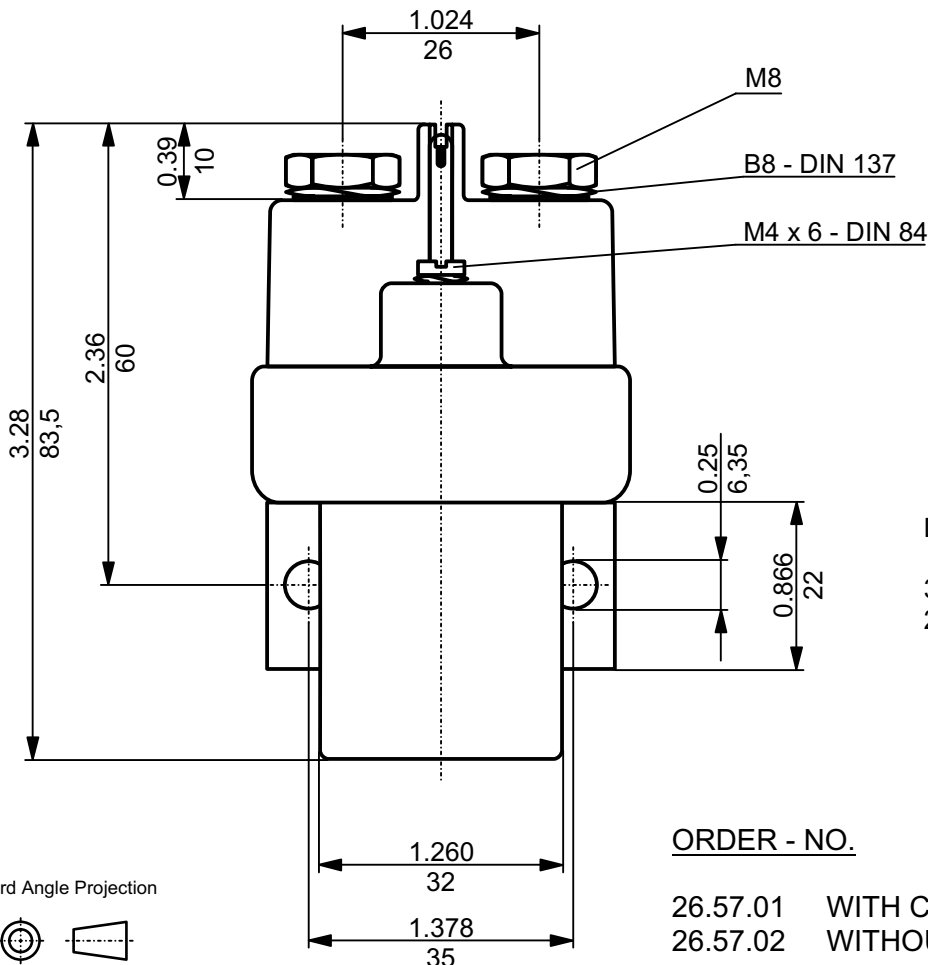


Circuit



A = Pull in coil
 H = Holding coil

COIL SUPPRESSION



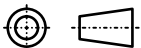
DIMENSIONAL TOLERANCES

3 PLACE DECIMAL ± 0.010
 2 PLACE DECIMAL ± 0.03
 ANGULAR $\pm 0^{\circ}30'$

ORDER - NO.

26.57.01 WITH COIL SUPPRESSION
 26.57.02 WITHOUT COIL SUPPRESSION

Third Angle Projection



1993	Date	Name	Inch mm	Scale 1:1
Design	04.11.	Jask.		
Check	04.11.	Grupp	General Tolerances DIN 7168 m ISO 2768	
Appro				



Drawing No. \approx Order No.
26.57.01
26.57.02

