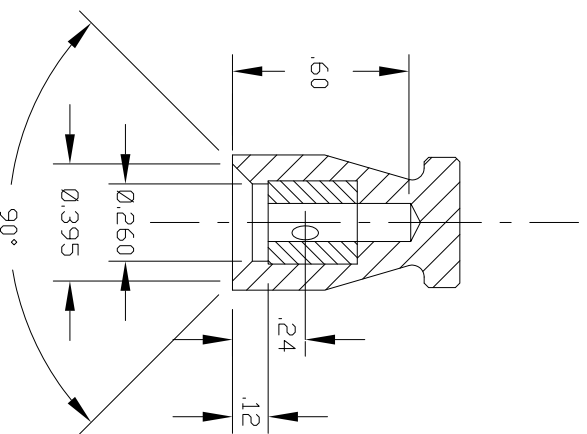
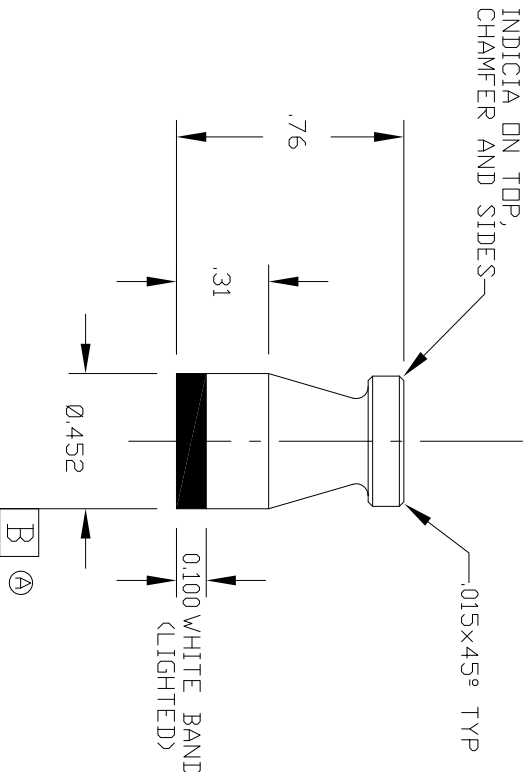
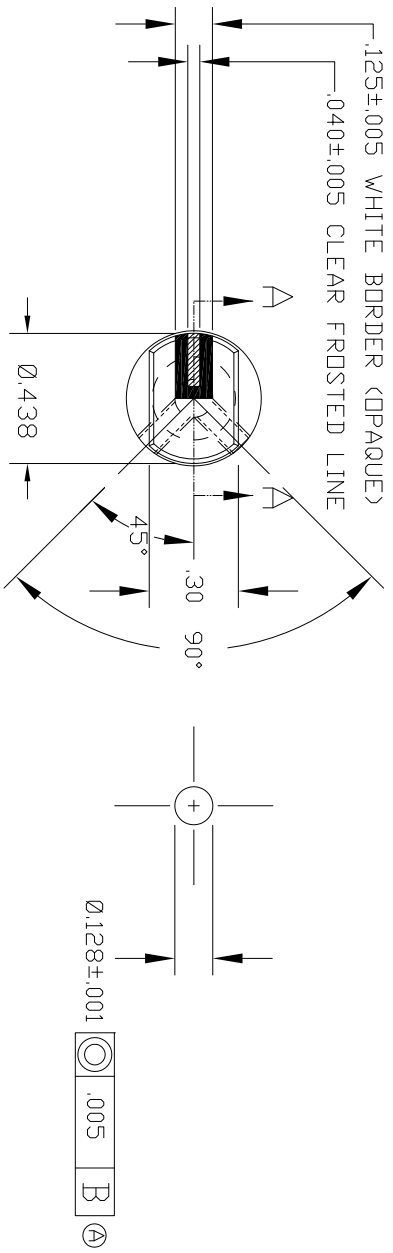


LTR.	DESCRIPTION	APPR.	DATE.
A	ADD GD&T AND PAINT	MZ	3/19/13



SECTION A-A

- NOTES:
1. KNDB: ACRYLIC, CLEAR. PAINTED BLACK PER FED STD-595 COLOR #37038, WHITE BAND/BORDER PER FED STD-595 COLOR #37875, FINISH WITH CLEAR MATTE.
 2. ALL PAINTS SHERWIN WILLIAMS POLYURETHANE.
 3. INSERT: BRASS, NICKEL PLATE PER QQ-N-290.
 4. SET SCREWS: (2) MSS1021-101

BREAK ALL SHARP EDGES .005 MAX		MATERIAL: SEE NOTES		ELECTRONIC HARDWARE CORP. 320 BROAD HOLLOW RD, FARMINGDALE, NY 11735	
TOLERANCES (EXCEPT AS NOTED)		FINISH: SEE NOTES		DESCRIPTION: KNDB, PENCIL	
DECIMALS				REF: 40-00-111	
XXX = ±.02		DRAWN BY: MZ		DATE: 12/21/10	
FRACTIONAL ± 1/32		APPROV. BY: WS		DATE: 12/21/10	
ANGULAR ±°		SCALE: N/A		SHEET 1 OF 1	
		SIZE FSCM NO. A 23480		DWG. NO. 29-01064-0	
				REV. A	