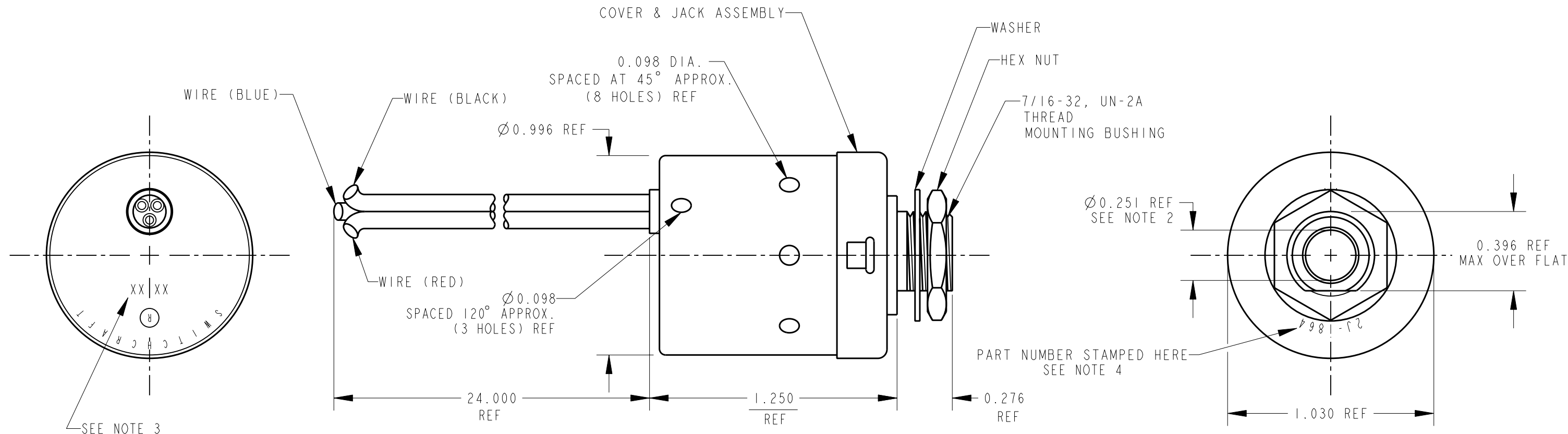


NOTES:

- COVER ASSEMBLY IS PERMANENTLY SECURED TO CAN ASSEMBLY.
- MATES WITH SWITCHCRAFT NO. 482 PLUG.
- INK STAMP; MANUFACTURING DATE CODE: $\begin{matrix} \text{XX} & \text{XX} \\ | & | \\ \text{YEAR} & \text{WEEK} \end{matrix}$
- MAINTAIN PART NUMBER WITH DASH AS SHOWN ON BOM, DRAWING, AND SHIPPING BARCODE LABEL.



MATERIAL SPECIFICATIONS:

MOUNTING BUSHING: BRASS, NICKEL PLATED
 INSULATION: PAPER BASE PHENOLIC.
 TIP & RING SPRINGS: NICKEL SILVER, INTEGRAL CONTACTS.
 SLEEVE TERMINALS: BRASS, HOT TINNED
 CAN: BRASS, NICKEL PLATED
 COVER: BRASS, NICKEL PLATED
 BUSHING: MOLDED NYLON.
 WASHER: STEEL, NICKEL PLATED
 HEX NUT: BRASS, NICKEL PLATED
 WIRE: SINGLE CONDUCTOR, UNSHIELDED, 18 AWG (19 X 30), SILVER COATED COPPER,

CUSTOMER: BOEING COMMERCIAL AIRPLANES

CUSTOMER DRAWING

					★ STAR SYMBOL DENOTES CRITICAL DIMENSION	THIS DRAWING DESCRIBES A DESIGN CONSIDERED PROPRIETARY IN NATURE, DEVELOPED AND MANUFACTURED BY SWITCHCRAFT INC. AND IS RELEASED ON A CONFIDENTIAL BASIS FOR IDENTIFICATION PURPOSES ONLY.				
					UNLESS OTHERWISE SPECIFIED	SIZE	WIDTH	MULT	LBS/M	TEMPER
					1. ALL DIMENSIONS IN INCHES - TWO PLACE DECIMALS ±0.01 - THREE PLACE DECIMALS ±0.005 - ANGLES ±1° - ALL DIA. CONCENTRIC WITHIN 0.005 T.I.R.	FINISH		MATERIAL		
					2. FEATURES ON THE SAME CENTERLINE MUST BE ALIGNED WITHIN ±0.002	SPEC No.		SPEC No.		
					3. REMOVE ALL BURRS	FIRST USED ON		SCALE 1 = 0.375		
A	25376	7-28-06	JEB	TJK	DATE DRAWN	BY	CHKD	APVD	Switchcraft [®]	
REV	ECO NUMBER	DATE	BY	APVD	20-Aug-09	JEB	JEB	TJK		
REVISIONS					DO NOT SCALE DRAWING	NAME		PART No.		REV
						SHIELDED "LITTEL JAX" ASSEMBLY		2J-1864		A