



# NORMAN LAMPS, INC.

## LED RETROFIT LIGHTING

LED COB HIGH OUTPUT RETROFIT LAMPS | HIGH BAY LED FIXTURES  
LED CEILING PANEL FIXTURES | HYBRID T8 LED™ TUBES



18W-120W, UP TO 14,500 LUMENS

3500K, 4000K, 5000K, & 6500K



2 X 4 FT. AND 2 X 2 FT. SIZES



BALLAST AND DIRECT VOLTAGE COMPATIBLE



100W-200W, UP TO 26,000 LUMENS

NORMANLAMPS.COM | TOLL FREE: 800-992-8020

## ***LED Tubes • LED High Bays • LED COB's • LED Panels***

Since 1985, ***Norman Lamps, Inc.*** has been a valuable supplier of quality lamp products to electrical supply companies, distributors, and OEM's across the North American marketplace and indeed the world. Over the past 30+ years ***NLI*** has grown into one of the world's premier suppliers of incandescent, halogen, fluorescent, neon, HID, and miniature LED bulbs.

***Norman Lamps, Inc.*** along with today's lighting industry is now firmly focused on bringing affordable LED solutions and cost effective retrofitting into incandescent, fluorescent, halogen, and HID products of all kinds. ***NLI's*** relentless focus on expanding and stocking new, leading edge LED products have again positioned us in the important role as the premier stocking supplier in America.

Our LED lamp, *in stock and ready to ship inventory* is the largest and broadest you will find anywhere. This *in stock and ready to ship* LED lamp inventory enables us to ship your orders same day and complete, thus avoiding potentially costly back orders and additional shipping costs from multiple vendor purchasing.

Our sales and purchasing offices as well as primary distribution facility are located 25 miles west of Chicago, Illinois in the heartland of the United States. We invite you to contact us to arrange a tour of our products and facility. Come experience our company first hand and meet the inside people who can make ***Norman Lamps, Inc.*** your most profitable source for lighting.

### ***Norman Lamps, Inc.***

1775 Wallace Ave. • P.O. Box 3550  
Saint Charles, Illinois 60174 U.S.A.



USA: 1-800-992-8020 • FAX: 1-866-482-3916 • WEB: [normanlamps.com](http://normanlamps.com)

Contacts:    [dan@normanlamps.com](mailto:dan@normanlamps.com)      [michael@normanlamps.com](mailto:michael@normanlamps.com)

***Contact us for the LED lamps you need shipped out today!***

# Contents Directory

|  | Page Number |
|--|-------------|
| <b>LED T5 Linear Tubes</b>                             |             |
| 48" T5 High Output, Ballast Compatible                 | 1           |
| <b>LED T8 Linear Tubes</b>                             |             |
| 48" Hybrid™  | 2           |
| 36" Hybrid™  | 3           |
| 24" Hybrid™  | 4           |
| <b>LED COB Bulbs</b>                                   |             |
| 18 Watt, Medium Base                                   | 5           |
| 28 Watt, Medium Base                                   | 6           |
| 38 Watt, Medium Base                                   | 7           |
| 38 Watt, Mogul Base                                    | 8           |
| 58 Watt, Mogul Base                                    | 9           |
| 80 Watt, Mogul Base                                    | 10          |
| 100 Watt, Mogul Base                                   | 11          |
| 120 Watt, Mogul Base                                   | 12          |
| <b>LED High Bay Fixtures</b>                           |             |
| UFO Fixture, 100w, 120w, 150w, 200w                    | 13          |
| Linear Fixture, 150 Watt                               | 14          |
| <b>LED Retrofit Kits</b>                               |             |
| 2' x 2' Troffer Kit or 4' LED Tube Kit, Magnetic Mount | 15          |
| 2' x 4' Troffer Kit or 8' LED Tube Kit, Magnetic Mount | 16          |
| <b>LED Can Light Retrofits</b>                         |             |
| 4" LED Can Light Retrofit                              | 17          |
| 5" & 6" LED Can Light Retrofit                         | 18          |
| <b>LED Ceiling Light Panels</b>                        |             |
| 2' x 2' LED Flat Light Panel, 45 Watt                  | 19          |
| 2' x 4' LED Flat Light Panel, 53 Watt                  | 20          |
| <b>LED Puck Light</b>                                  |             |
| GX53 Base, 7 Watt, 3" Diameter                         | 21          |
| <b>LED Compact Lamp (CLED)</b>                         |             |
| PLL40 Series, 20 Watt, 2G11 Base                       | 22          |
| <b>LED T8 U-Bent Tube</b>                              |             |
| 6" Spacing, 18 Watt                                    | 23          |



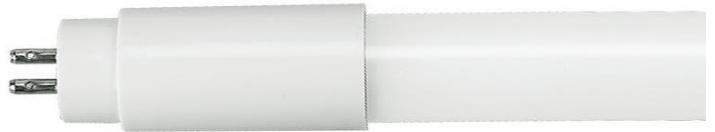
Norman Lamps, Inc. - Product Data – 48" Tube

# High-Output™ T5 LED Lighting

25.5 Watts

The **High-Output™ T5** retrofit **LED** tube outperforms all other T5 **LED** technology

- **T5 High-Output LED 48" tube lamp.**
- Ballast Compatible LED Tube for direct retrofit of 54 watt fluorescent tubes
- Retrofits into any 48" ballasted T5 lighting fixture with no rewiring required
- Compatible with existing electronic ballast for quick and easy **plug & play installation**
- 50% energy savings and a lifespan of greater than 50,000 hours
- Works with the existing lamp sockets
- NSF-2 Certified
- **3,400 Lumens @ 25.5 Watts**
- **48" Tube**



## Specifications:

|                |                             |                        |
|----------------|-----------------------------|------------------------|
| Model:         | LED-T5-48"                  | <b>High-Output™ T5</b> |
| Wattage:       | 25.5 Watts                  |                        |
| Input Voltage: | Ballast compatible only     |                        |
| Color Temp:    | 3,500k, 4,000k, 5,000k      |                        |
| Lumens:        | 3,400 Lumens @ 25.5 Watts   |                        |
| Viewing Angle: | 240 Degree viewing angle    |                        |
| Efficacy       | >130lm/W                    |                        |
| Life Hours:    | >50,000 Hours               |                        |
| Dimensions:    | 0.63" Diameter x 48" Length | Base: G5 Min. Bi-Pin   |
| Replaces:      | 54W Fluorescent T5 tubes    | Pack: 30/Case          |

## Features:

- Plug & Play Installation (No Rewiring Required)
- Electronic Ballast compatible
- High Output LED tube directly replaces all 54w T5 48" fluorescent tubes
- LED tubes are clearly labeled with instructions for proper use
- Compatible with existing ballasts in fixture
- Compatible with existing lamp sockets
- >50% Energy Savings
- Tube is shatter protected and rated for use in food service industry
- >83 C.R.I.
- 5 Year Warranty
- DLC 4.0 qualified



## Norman Lamps, Inc.

Norman Lamps maintains one of the largest LED lamp inventories in the United States. This inventory, combined with state-of-the-art order processing, allows us to ship your orders accurately and without delay. Norman LED lamps combine the highest level of energy saving efficiency with the highest lumen output levels, longest lifespan, best color rendering, and effective beam spread to create the best in LED lamp products.

## Certifications:



Damp Location Certified



## Ordering:

| Model           | Lumens       | Color Temp.                       |
|-----------------|--------------|-----------------------------------|
| <b>LED-T525</b> | <b>34</b>    | <b>XX</b>                         |
| T5, 25.5W       | 34 (3,400lm) | 35K (3,500k)<br>DLC # CH1156HO-35 |
|                 |              | 4K (4,000k)<br>DLC # CH1156HO-40  |
|                 |              | 5K (5,000k)<br>DLC # CH1156HO-50  |





The **HYBRID™ T8** is a universal retrofit **LED** tube that outperforms all other T8 LED technology

- **Ballast Compatible & Direct Voltage Compatible (Patented Driver Technology)**
- Dual Mode internal driver automatically adapts to either ballasted or direct voltage formats
- Compatible with any existing electronic ballast for quick and easy, plug & play installation
- Operates on direct voltage input where ballast bypass is the desired format
- Direct voltage wiring instructions are clearly marked on each LED tube, simplifying the installation process
- Direct voltage Input range is 120VAC ~ 277VAC
- Works with shunted and non-shunted sockets
- **2,100 Lumens & 2,200 Lumens @ 18 Watts**
- **48" Tube**



Licensed under U.S. Patent # 8,729,809

## Specifications:

|                |  |         |                   |
|----------------|--|---------|-------------------|
| Model:         | LED-T8-48"   | Series: | <b>HYBRID™ T8</b> |
| Wattage:       | 18 Watts   |         |                   |
| Input Voltage: | Built-In universal voltage driver 120VAC~277VAC                    |         |                   |
| Color Temp:    | 3,500k, 4,000k, 5,000k, 6,500k                                     |         |                   |
| Lumens:        | <u>2,100lm</u> @ 3,500k & 4,000k. <u>2,200lm</u> @ 5,000k & 6,500k |         |                   |
| Viewing Angle: | 240 Degree viewing angle   |         |                   |
| Efficacy       | >120lm/W   |         |                   |
| Life Hours:    | >50,000 Hours  |         |                   |
| Dimensions:    | 1" Diameter x 48" Length   | Base:   | G-13 Bi-Pin       |
| Replaces:      | 32W Fluorescent T8 tubes   | Pack:   | 30/Case           |

## Features:

- Plug & Play Installation (No Rewiring Required)
- Electronic Ballast compatible
- Direct Voltage Compatible 120VAC~277VAC
- All LED tubes are clearly labeled with direct voltage wiring instructions
- Compatible with existing ballast or with ballast removed
- Dual Mode Internal Driver
- >40% Energy Savings
- Tube is shatter protected and rated for use in food service industry
- Universal compatibility, Hybrid T8 LED Retrofit Tube
- >82 C.R.I.
- 5 Year Warranty

**Norman Lamps, Inc.**



Norman Lamps maintains one of the largest LED lamp inventories in the United States. This inventory, combined with state-of-the-art order processing, allows us to ship your orders accurately and without delay. Norman LED lamps combine the highest level of energy saving efficiency with the highest lumen output levels, longest lifespan, best color rendering, and effective beam spread to create the best in LED lamp products.

## Certifications:



Damp Location Certified 

## Ordering:

| Model               | Lumens    | Color Temp.   |
|---------------------|-----------|---|
| <b>LED-T818</b>     | <b>XX</b> | <b>XX</b>   |
| <b>T8, 18W</b>      |           |   |
| <b>21 (2,100lm)</b> |           | <b>35K (3,500k)</b><br>DLC # T08J01-35H<br><b>4K (4,000k)</b><br>DLC # T08J01-40H |
| <b>22 (2,200lm)</b> |           | <b>5K (5,000k)</b><br>DLC # T08J01-50H<br><b>65K (6,500k)</b><br>DLC # T08J01-65H |



The **HYBRID™ T8** is a universal retrofit **LED** tube that outperforms all other T8 **LED** technology

- **Ballast Compatible & Direct Voltage Compatible** (Patented Driver Technology)
- Dual Mode internal driver automatically adapts to either ballasted or direct voltage formats
- Compatible with any existing Electronic or Magnetic ballast for quick and easy, plug & play installation
- Operates on direct voltage input where ballast bypass is the desired format
- Direct voltage wiring instructions are clearly marked on each LED tube, simplifying the installation process
- Direct voltage Input range is 120VAC ~ 277VAC
- **1,600 Lumens @ 13 Watts**
- **36" Tube**



Licensed under U.S. Patent # 8,729,809

## Specifications:

|                |   |         |                   |
|----------------|---|---------|-------------------|
| Model:         | LED-T8-36"                                      | Series: | <b>HYBRID™ T8</b> |
| Wattage:       | 13 Watts  |         |                   |
| Input Voltage: | Built-In universal voltage driver 120VAC~277VAC |         |                   |
| Color Temps:   | 4,000k, 5,000k                                  |         |                   |
| Lumens:        | 1,600lm   |         |                   |
| Viewing Angle: | 240 Degree viewing angle                        |         |                   |
| Efficacy       | >120lm/W  |         |                   |
| Life Hours:    | >50,000 Hours                                   |         |                   |
| Dimensions:    | 1" Diameter x 36" Length                        | Base:   | G-13 Bi-Pin       |
| Replaces:      | 25W & 30W Fluorescent T8 tubes                  | Pack:   | 20/Case           |

## Certifications:



Damp Location Certified 

## Features:

- Plug & Play Installation (No Rewiring Required)
- Electronic & Magnetic Ballast compatible
- Direct Voltage Compatible 120VAC~277VAC
- Direct Voltage Functions on 2-Pins one end
- Compatible with existing ballast or with ballast removed
- Dual Mode Internal Driver
- >50% Energy Savings
- Universal compatibility, Hybrid T8 LED Retrofit Tube
- >82 C.R.I.
- 5 Year Warranty

## Ordering:

| Model            | Lumens           | Color Temp.                              |
|------------------|------------------|--|
| <b>LED-T813W</b> | <b>3FT</b>       | <b>XX</b>                                |
| <b>T8, 13W</b>   | <b>3FT (36")</b> | <b>4K (4,000k)</b><br><b>5K (5,000k)</b> |

## Norman Lamps, Inc.



Norman Lamps maintains one of the largest LED lamp inventories in the United States. This inventory, combined with state-of-the-art order processing, allows us to ship your orders accurately and without delay. Norman LED lamps combine the highest level of energy saving efficiency with the highest lumen output levels, longest lifespan, best color rendering, and effective beam spread to create the best in LED lamp products.



The **HYBRID™ T8** is a universal retrofit **LED** tube that outperforms all other T8 **LED** technology

- **Ballast Compatible & Direct Voltage Compatible** (Patented Driver Technology)
- Dual Mode internal driver automatically adapts to either ballasted or direct voltage formats
- Compatible with any existing Electronic or Magnetic ballast for quick and easy, plug & play installation
- Operates on direct voltage input where ballast bypass is the desired format
- Direct voltage wiring instructions are clearly marked on each LED tube, simplifying the installation process
- Direct voltage Input range is 120VAC ~ 277VAC
- **1,000 Lumens @ 9 Watts**
- **24" Tube**



Licensed under U.S. Patent # 8,729,809

## Specifications:

|                |   |                           |
|----------------|---|---------------------------|
| Model:         | LED-T8-24"                                      | Series: <b>HYBRID™ T8</b> |
| Wattage:       | 9 Watts   |                           |
| Input Voltage: | Built-In universal voltage driver 120VAC~277VAC |                           |
| Color Temps:   | 3,500k, 4,000k, 5,000k, 6,500k                  |                           |
| Lumens:        | 1,000lm   |                           |
| Viewing Angle: | 240 Degree viewing angle                        |                           |
| Efficacy       | >100lm/W  |                           |
| Life Hours:    | >50,000 Hours                                   |                           |
| Dimensions:    | 1" Diameter x 24" Length                        | Base: G-13 Bi-Pin         |
| Replaces:      | 18W Fluorescent T8 tubes                        | Pack: 20/Case             |

## Features:

- Plug & Play Installation (No Rewiring Required)
- Electronic & Magnetic Ballast compatible
- Direct Voltage Compatible 120VAC~277VAC
- Direct Voltage Functions on 2-Pins one end
- Compatible with existing ballast or with ballast removed
- Dual Mode Internal Driver
- >50% Energy Savings
- Universal compatibility, Hybrid T8 LED Retrofit Tube
- >82 C.R.I.
- 5 Year Warranty



## Norman Lamps, Inc.

Norman Lamps maintains one of the largest LED lamp inventories in the United States. This inventory, combined with state-of-the-art order processing, allows us to ship your orders accurately and without delay. Norman LED lamps combine the highest level of energy saving efficiency with the highest lumen output levels, longest lifespan, best color rendering, and effective beam spread to create the best in LED lamp products.

## Certifications:



Damp Location Certified 

## Ordering:

| Model           | Lumens     | Color Temp.  |
|-----------------|------------|--|
| <b>LED-T89W</b> | <b>2FT</b> | <b>XX</b>  |
| T8, 9W          | 2FT (24")  | 35K (3,500k)<br>4K (4,000k)<br>5K (5,000k)<br>65K (6,500k) |



Norman Lamps, Inc. - Product Data

# LED-C18E27

18w COB Bulb



- 18 Watts
- 1,980 Lumens
- E27 Base
- 2,700k, 5,000k
- High Output LED Bulb
- Cover Protected Diodes



Top View

Replaces **200w ~ 300w** Incandescent Lamps

## Specifications:

|                |   |
|----------------|---|
| Model:         | LED-C18E27                                |
| Wattage:       | 18 Watts                                  |
| Input Voltage: | 100VAC ~ 277VAC (Bypass Ballast)          |
| Color Temp:    | 2,700k (Warm White) & 5,000k (Pure White) |
| Lumens:        | 1,980 Lumens                              |
| Viewing Angle: | 360 Degree                                |
| Efficacy:      | 110lm/W                                   |
| Life Hours:    | >40,000 Hours                             |
| Dimensions:    | 2.52" Diameter x 7.7" Length              |
| Replaces:      | H.I.D., Incandescent, & Fluorescent Lamps |

## Certifications:



Damp Location Certified  IP63

## Features:

- Direct Replacement for H.I.D., Incandescent & Fluorescent Lamps
- Powerful & Sustained Lumen Output.
- E27 Medium Screw Base fits all Medium Base sockets.
- 80% Energy Savings vs HID
- C.R.I. >80
- Very Long Service Life
- IP63 Rating
- Instant starts to FULL lumen output.
- Simple Retrofit: Bypass ballast and direct wire to the socket.
- 5 Year Warranty

## Ordering:

|            |   | Color Temp.  |
|------------|---|--------------|
| LED-C18E27 | - | XX           |
|            |   | 27K (2,700k) |
|            |   | 5K (5,000k)  |

DLC # WH-YM-B3-18W

Norman Lamps, Inc.



Norman Lamps maintains one of the largest LED lamp inventories in the United States. This inventory, combined with state-of-the-art order processing, allows us to ship your orders accurately and without delay. Norman LED lamps combine the highest level of energy saving efficiency with the highest lumen output levels, longest lifespan, best color rendering, and effective beam spread to create the best in LED lamp products.



Norman Lamps, Inc. - Product Data

# LED-C28E27

28w COB Bulb



- 28 Watts
- 3,360 Lumens
- E27 Base
- 2,700k, 5,000k
- High Output LED Bulb



Top View

Replaces **70W** HID Lamps

## Specifications:

|                |   |
|----------------|---|
| Model:         | LED-C28E27                                |
| Wattage:       | 28 Watts (Replaces 70w H.I.D. Bulbs)      |
| Input Voltage: | 100VAC ~ 277VAC (Bypass Ballast)          |
| Color Temp:    | 2,700k (Warm White) & 5,000k (Pure White) |
| Lumens:        | 3,360 Lumens                              |
| Viewing Angle: | 360 Degree                                |
| Efficacy       | 120lm/W                                   |
| Life Hours:    | >40,000 Hours                             |
| Dimensions:    | 3.65" Diameter x 9.7" Length              |
| Replaces:      | 70W (Metal Halide & High Pressure Sodium) |

## Certifications:



Damp Location Certified  IP63

## Features:

- Direct Replacement for H.I.D. lamps. (70W)
- Powerful & Sustained Lumen Output.
- E27 Medium Screw Base fits all Medium Base sockets.
- 80% Energy Savings vs HID
- C.R.I. >80
- Very Long Service Life
- IP63 Rating
- Instant starts to FULL lumen output.
- Simple Retrofit: Bypass ballast and direct wire to the socket.
- 5 Year Warranty

## Ordering:

|            |   | Color Temp.  |
|------------|---|--------------|
| LED-C28E27 | - | XX           |
|            |   | 27K (2,700k) |
|            |   | 5K (5,000k)  |

DLC # WH-YM-B3-28W

Norman Lamps, Inc.



Norman Lamps maintains one of the largest LED lamp inventories in the United States. This inventory, combined with state-of-the-art order processing, allows us to ship your orders accurately and without delay. Norman LED lamps combine the highest level of energy saving efficiency with the highest lumen output levels, longest lifespan, best color rendering, and effective beam spread to create the best in LED lamp products.





Norman Lamps, Inc. - Product Data

# LED-C38E27

38w COB Bulb



- 38 Watts
- 4,560 Lumens
- E27 Base
- 5,000k
- High Output



Top View

Replaces **100W** HID Lamps

## Specifications:

|                |  |
|----------------|--|
| Model:         | LED-C38E27-5K                              |
| Wattage:       | 38 Watts (Replaces 100w H.I.D. Bulbs)      |
| Input Voltage: | 100VAC ~ 277VAC (Bypass Ballast)           |
| Color Temp:    | 5,000k                                     |
| Lumens:        | 4,560 Lumens                               |
| Viewing Angle: | 360 Degree                                 |
| Efficacy       | 120lm/W                                    |
| Life Hours:    | >40,000 Hours                              |
| Dimensions:    | 3.65" Diameter x 9.7" Length               |
| Replaces:      | 100W (Metal Halide & High Pressure Sodium) |

## Certifications:



Damp Location Certified  IP63

## Features:

- Direct Replacement for H.I.D. lamps. (100W)
- Powerful & Sustained Lumen Output.
- E27 Medium Screw Base fits all Medium Base sockets.
- 80% Energy Savings vs HID
- C.R.I. >80
- Very Long Service Life
- IP63 Rating
- Instant starts to FULL lumen output.
- Simple Retrofit: Bypass ballast and direct wire to the socket.
- 5 Year Warranty

## Ordering:

|            |   | Color Temp. |
|------------|---|-------------|
| LED-C38E27 | - | 5K          |
|            |   | 5K (5,000k) |

**DLC # WH-YM-B3-38W**

**Norman Lamps, Inc.**



Norman Lamps maintains one of the largest LED lamp inventories in the United States. This inventory, combined with state-of-the-art order processing, allows us to ship your orders accurately and without delay. Norman LED lamps combine the highest level of energy saving efficiency with the highest lumen output levels, longest lifespan, best color rendering, and effective beam spread to create the best in LED lamp products.





Norman Lamps, Inc. - Product Data

# LED-C38EX39

38w COB Bulb



- 38 Watts
- 4,560 Lumens
- EX39 Base
- 5,000k
- High Output



Replaces **100W** HID Lamps

## Specifications:

|                |  |
|----------------|--|
| Model:         | LED-C38EX39-5K                             |
| Wattage:       | 38 Watts (Replaces 100w H.I.D. Bulbs)      |
| Input Voltage: | 100VAC ~ 277VAC (Bypass Ballast)           |
| Color Temp:    | 5,000k                                     |
| Lumens:        | 4,560 Lumens                               |
| Viewing Angle: | 360 Degree                                 |
| Efficacy       | 120lm/W                                    |
| Life Hours:    | >40,000 Hours                              |
| Dimensions:    | 3.65" Diameter x 9.7" Length               |
| Replaces:      | 100W (Metal Halide & High Pressure Sodium) |

## Certifications:



Damp Location Certified  IP63

## Features:

- Direct Replacement for H.I.D. lamps. (100W)
- Powerful & Sustained Lumen Output.
- EX39 Mogul Screw Base fits all Mogul Base sockets.
- 80% Energy Savings vs HID
- C.R.I. >80
- Very Long Service Life
- IP63 Rating
- Instant starts to FULL lumen output.
- Simple Retrofit: Bypass ballast and direct wire to the socket.
- 5 Year Warranty

## Ordering:

|             |   | Color Temp. |
|-------------|---|-------------|
| LED-C38EX39 | - | 5K          |
|             |   | 5K (5,000k) |

**DLC # WH-YM-B3-38W**

## Norman Lamps, Inc.



Norman Lamps maintains one of the largest LED lamp inventories in the United States. This inventory, combined with state-of-the-art order processing, allows us to ship your orders accurately and without delay. Norman LED lamps combine the highest level of energy saving efficiency with the highest lumen output levels, longest lifespan, best color rendering, and effective beam spread to create the best in LED lamp products.



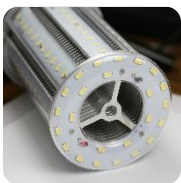
Norman Lamps, Inc. - Product Data

# LED-C58EX39

58w COB Bulb



- 58 Watts
- 6,900 Lumens
- EX39 Base
- 5,000k
- High Output



Top View


Replaces 175W HID Lamps

## Specifications:

|                |  |
|----------------|--|
| Model:         | LED-C58EX39-5K                             |
| Wattage:       | 58 Watts (Replaces 175w H.I.D. Bulbs)      |
| Input Voltage: | 100VAC ~ 277VAC (Bypass Ballast)           |
| Color Temp:    | 5,000k                                     |
| Lumens:        | 6,900 Lumens                               |
| Viewing Angle: | 360 Degree                                 |
| Efficacy       | 120lm/W                                    |
| Life Hours:    | >40,000 Hours                              |
| Dimensions:    | 3.65" Diameter x 9.7" Length               |
| Replaces:      | 175W (Metal Halide & High Pressure Sodium) |

## Certifications:



Damp Location Certified  IP63

## Features:

- Direct Replacement for H.I.D. lamps. (175W)
- Powerful & Sustained Lumen Output.
- EX39 Mogul Screw Base fits all Mogul Base sockets.
- 80% Energy Savings vs HID
- C.R.I. >80
- Very Long Service Life
- IP63 Rating
- Instant starts to FULL lumen output.
- Simple Retrofit: Bypass ballast and direct wire to the socket.
- 5 Year Warranty

## Ordering:

|             |   | Color Temp. |
|-------------|---|-------------|
| LED-C58EX39 | - | 5K          |
|             |   | 5K (5,000k) |

DLC # WH-YM-B3-58W

Norman Lamps, Inc.



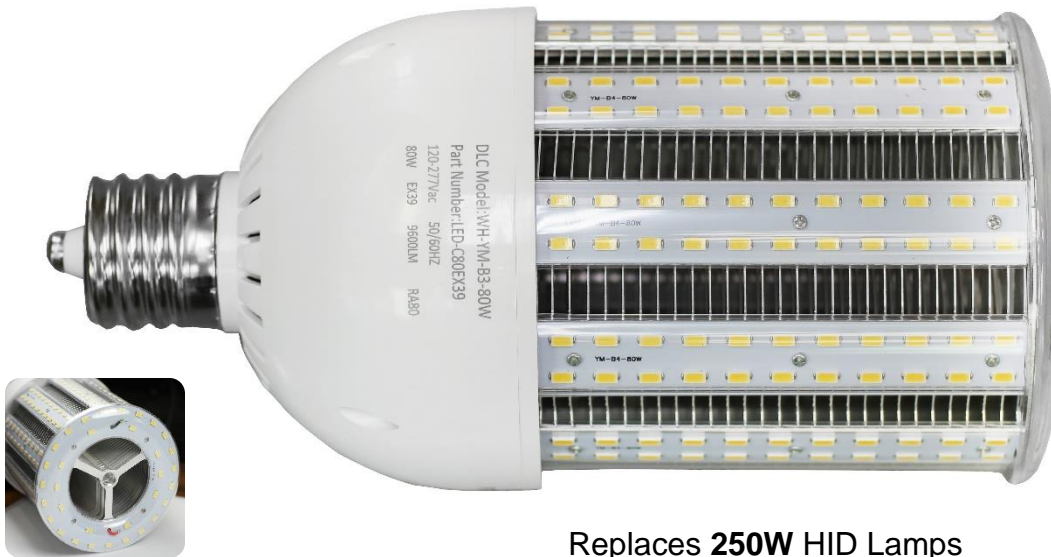
Norman Lamps maintains one of the largest LED lamp inventories in the United States. This inventory, combined with state-of-the-art order processing, allows us to ship your orders accurately and without delay. Norman LED lamps combine the highest level of energy saving efficiency with the highest lumen output levels, longest lifespan, best color rendering, and effective beam spread to create the best in LED lamp products.



Norman Lamps, Inc. - Product Data

# LED-C80EX39

80w COB Bulb



- 80 Watts
- 9,600 Lumens
- EX39 Base
- 5,000k
- High Output

Replaces **250W** HID Lamps

## Specifications:

|                |  |
|----------------|--|
| Model:         | LED-C80EX39-5K                             |
| Wattage:       | 80 Watts (Replaces 250w H.I.D. Bulbs)      |
| Input Voltage: | 100VAC ~ 277VAC (Bypass Ballast)           |
| Color Temp:    | 5,000k                                     |
| Lumens:        | 9,600 Lumens                               |
| Viewing Angle: | 360 Degree                                 |
| Efficacy       | 120lm/W                                    |
| Life Hours:    | >40,000 Hours                              |
| Dimensions:    | 4.75" Diameter x 9.5" Length               |
| Replaces:      | 250W (Metal Halide & High Pressure Sodium) |

## Certifications:



Damp Location Certified  IP63

## Features:

- Direct Replacement for H.I.D. lamps. (250W)
- Powerful & Sustained Lumen Output.
- EX39 Mogul Screw Base fits all Mogul Base sockets.
- 80% Energy Savings vs HID
- C.R.I. >80
- Very Long Service Life
- IP63 Rating
- Instant starts to FULL lumen output.
- Simple Retrofit: Bypass ballast and direct wire to the socket.
- 5 Year Warranty

## Ordering:

|             |   |             |
|-------------|---|-------------|
|             |   | Color Temp. |
| LED-C80EX39 | - | 5K          |
|             |   | 5K (5,000k) |

**DLC # WH-YM-B3-80W**

## Norman Lamps, Inc.



Norman Lamps maintains one of the largest LED lamp inventories in the United States. This inventory, combined with state-of-the-art order processing, allows us to ship your orders accurately and without delay. Norman LED lamps combine the highest level of energy saving efficiency with the highest lumen output levels, longest lifespan, best color rendering, and effective beam spread to create the best in LED lamp products.



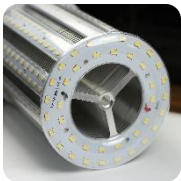
Norman Lamps, Inc. - Product Data

# LED-C100EX39

100w COB Bulb



- 100 Watts
- 12,000 Lumens
- EX39 Base
- 5,000k
- High Output



Replaces **300W** HID Lamps

## Specifications:

|                |  |
|----------------|--|
| Model:         | LED-C100EX39-5K                            |
| Wattage:       | 100 Watts (Replaces 300w H.I.D. Bulbs)     |
| Input Voltage: | 100VAC ~ 277VAC (Bypass Ballast)           |
| Color Temp:    | 5,000k                                     |
| Lumens:        | 12,000 Lumens                              |
| Viewing Angle: | 360 Degree                                 |
| Efficacy       | 120lm/W                                    |
| Life Hours:    | >40,000 Hours                              |
| Dimensions:    | 4.75" Diameter x 11.65" Length             |
| Replaces:      | 300W (Metal Halide & High Pressure Sodium) |

## Certifications:



Damp Location Certified  IP63

## Features:

- Direct Replacement for H.I.D. lamps. (300W)
- Powerful & Sustained Lumen Output.
- EX39 Mogul Screw Base fits all Mogul Base sockets.
- 80% Energy Savings vs HID
- C.R.I. >80
- Very Long Service Life
- IP63 Rating
- Instant starts to FULL lumen output.
- Simple Retrofit: Bypass ballast and direct wire to the socket.
- 5 Year Warranty

## Ordering:

|              |   | Color Temp. |
|--------------|---|-------------|
| LED-C100EX39 | - | 5K          |
|              |   | 5K (5,000k) |

**DLC # WH-YM-B3-100W**

## Norman Lamps, Inc.



Norman Lamps maintains one of the largest LED lamp inventories in the United States. This inventory, combined with state-of-the-art order processing, allows us to ship your orders accurately and without delay. Norman LED lamps combine the highest level of energy saving efficiency with the highest lumen output levels, longest lifespan, best color rendering, and effective beam spread to create the best in LED lamp products.





Norman Lamps, Inc. - Product Data

# LED-C120EX39

120w COB Bulb



- 120 Watts
- 14,500 Lumens
- EX39 Base
- 5,000k
- High Output



Replaces 400W HID Lamps

## Specifications:

|                |  |
|----------------|--|
| Model:         | LED-C120EX39-5K                            |
| Wattage:       | 120 Watts (Replaces 400w H.I.D. Bulbs)     |
| Input Voltage: | 100VAC ~ 277VAC (Bypass Ballast)           |
| Color Temp:    | 5,000k                                     |
| Lumens:        | 14,500 Lumens                              |
| Viewing Angle: | 360 Degree                                 |
| Efficacy       | 120lm/W                                    |
| Life Hours:    | >40,000 Hours                              |
| Dimensions:    | 4.75" Diameter x 12.75" Length             |
| Replaces:      | 400W (Metal Halide & High Pressure Sodium) |

## Certifications:



Damp Location Certified  IP63

## Features:

- Direct Replacement for H.I.D. lamps. (400W)
- Powerful & Sustained Lumen Output.
- EX39 Mogul Screw Base fits all Mogul Base sockets.
- 80% Energy Savings vs HID
- C.R.I. >80
- Very Long Service Life
- IP63 Rating
- Instant starts to FULL lumen output.
- Simple Retrofit: Bypass ballast and direct wire to the socket.
- 5 Year Warranty

## Ordering:

|              |   |             |
|--------------|---|-------------|
|              |   | Color Temp. |
| LED-C120EX39 | - | 5K          |
|              |   | 5K (5,000k) |

DLC # WH-YM-B3-120W

## Norman Lamps, Inc.



Norman Lamps maintains one of the largest LED lamp inventories in the United States. This inventory, combined with state-of-the-art order processing, allows us to ship your orders accurately and without delay. Norman LED lamps combine the highest level of energy saving efficiency with the highest lumen output levels, longest lifespan, best color rendering, and effective beam spread to create the best in LED lamp products.



Norman Lamps, Inc. - Product Data

# LED "UFO" High Bay Light



- *Very High Output LED Fixture*
- *100w, 120w, 150w, 200w*
- *130 Lumens Per Watt*
- *Hang, Plug, & Play Installation*
- *Replaces 175w ~ 600w HID's*
- *5,000k Pure White Light*
- *Voltage input 100~277VAC*
- *IP65 Waterproof Rating*
- *DLC Certified\* 100w, 150w, 200w*

\* 120w is not DLC certified. UL listed only.

## Specifications:

|                 |  |
|-----------------|--|
| Model:          | LED-UFOIU-5K (High Bay / Low Bay)      |
| Wattage:        | 100w, 120w, 150w, 200w                 |
| Input Voltage:  | 100VAC~277VAC                          |
| Color Temp:     | 5,000k C.R.I. >80 Power Factor: >0.95  |
| Initial Lumens: | 13,000lm, 15,600lm, 19,500lm, 26,000lm |
| Viewing Angle:  | 120 Degree Flood with no Dark Areas    |
| Efficacy        | >130 lm/W using LUXEON™ LED Chips      |
| Life Hours:     | >60,000 Hours with Minimal Lumen Loss  |
| Dimensions:     | 15" Wide X 8.25" High                  |
| Dimmable:       | The 120w UFO fixture is fully dimmable |

## Features:

- Direct Replacement for HID, Fluorescent, and Old LED High Bay Fixtures
- Powerful Lumen Output Producing Pure, 5,000k White Light
- Dimmable feature available in the 120W fixture only
- 80% Energy Savings and Very Low Heat Generation
- Ambient (Optimal) Temperature Operation is -40°C ~ 50°C
- Very Long Service Life vs HID and Fluorescent Technology
- Black Anodized Aluminum Housing with Ultra-Strong PC Lens
- PHILIPS™ Brand, LUXEON™ 3030 LED Chips
- Fixture Weight is only 16lbs providing for Easy and Quick Installs
- 5 Year Warranty



## Norman Lamps, Inc.

Norman Lamps maintains one of the largest LED lamp inventories in the United States. This inventory, combined with state-of-the-art order processing, allows us to ship your orders accurately and without delay. Norman LED lamps combine the highest level of energy saving efficiency with the highest lumen output levels, longest lifespan, best color rendering, and effective beam spread to create the best in LED lamp products.

## Certifications:



Damp Location Certified  IP65

## Ordering:

|                            |   |      |
|----------------------------|---|------|
| UFO-100WIU-5K              | = | 100W |
| UFO-120WIU-5K-DIM*         | = | 120W |
| UFO-150WIU-5K              | = | 150W |
| UFO-200WIU-5K              | = | 200W |
| * 120W fixture is dimmable |   |      |

DLC # AOK-100WIU-5K

DLC # AOK-150WIU-5K

DLC # AOK-200WIU-5K





Norman Lamps, Inc. - Product Data

# LED-HB80

4' Linear LED Fixture, High Output



## Specifications:

|                 |   |
|-----------------|---|
| Model:          | LED-HB80 (4' Linear LED Fixture, High Output) |
| Wattage:        | 150w  |
| Input Voltage:  | 100VAC~277VAC                                 |
| Color Temp:     | 5,000k C.R.I. >82 Power Factor: >0.95         |
| Initial Lumens: | 15,000lm (High Output Fixture)                |
| Viewing Angle:  | 120 Degree Flood                              |
| Efficacy:       | >100lm per Watt                               |
| Life Hours:     | >50,000 Hours with Minimal Lumen Depreciation |
| Dimensions:     | 48" Length X 6" Width X 3" Height             |
| Dimmable:       | The LED-HB80 fixture is non-dimmable          |

## Features:

- Direct Replacement for 400w HID and Fluorescent 4' fixtures
- Powerful Lumen Output Producing Pure, 5,000k White Light
- Flush Mount or Hanging Mount options are included
- Mounting Brackets and Hanging Cables are Included
- Excellent for coolers, warehouses, and general lighting applications
- Very Long Service Life vs HID and Fluorescent Technology
- Protective, Diffused cover provides even light distribution
- 99% downward directed lumen output. 120° Beam Spread
- Quick & Easy installation with lightweight aluminum housing
- 5 Year Warranty

## Certifications:



Damp Location Certified  IP44

## Ordering:

LED-HB80-180P

**DLC # FYT-T150W**

## Norman Lamps, Inc.



Norman Lamps maintains one of the largest LED lamp inventories in the United States. This inventory, combined with state-of-the-art order processing, allows us to ship your orders accurately and without delay. Norman LED lamps combine the highest level of energy saving efficiency with the highest lumen output levels, longest lifespan, best color rendering, and effective beam spread to create the best in LED lamp products.



Norman Lamps, Inc. - Product Data

# LED-STRIP KIT

24" TROFFER KIT



- 2 x 24" LED Strips
- 20 Watts Total
- 2,450 Lumens
- Retrofits 2 x 2 Troffers
- Retrofit 4' Fluorescent Fixtures
- Magnetic Mount Strips
- Magnetic Mount Driver
- Simple & Quick Installation
- Very High Output LED's
- Many Applications and Uses

## Specifications:

|                |  |                          |
|----------------|--|--------------------------|
| Model:         | LED-22TR20W                              | Retrofits 2 x 2 Troffers |
| Wattage:       | 20 Watts                                 |                          |
| Input Voltage: | 110VAC~277VAC                            |                          |
| Color Temp:    | 4,000k, 5,000k                           |                          |
| Lumens:        | 2,450 Lumens                             |                          |
| Viewing Angle: | 140 Degree Flood                         |                          |
| Efficacy       | >115 lm/W                                |                          |
| Life Hours:    | >40,000 Hours                            |                          |
| Dimensions:    | 0.38" Width x 24" Length                 |                          |
| Replaces:      | Fluorescent Tubes, Incandescent Lighting |                          |

## Features:

- Direct Replacement for Fluorescent Tubes & More
- Powerful Lumen Output
- Available in 4,000k, and 5,000k color temperatures
- 80% Energy Savings
- Magnetically attaches to metal surfaces
- Long Service Life & Extreme Versatility of uses
- Magnetic Strips & Driver for Quick & Easy Installations
- Specialty and General Lighting Applications
- Suitable for damp locations, Coolers, & Troffers
- 5 Year Warranty

## Certifications:



Damp Location Certified 

## Ordering:

|             | Color Temp. |
|-------------|-------------|
| LED-22TR20W | XX          |
|             | 4K (4,000k) |
|             | 5K (5,000k) |

**DLC #** RG-22TR20W40K

**DLC #** RG-22TR20W50K

**Norman Lamps, Inc.**



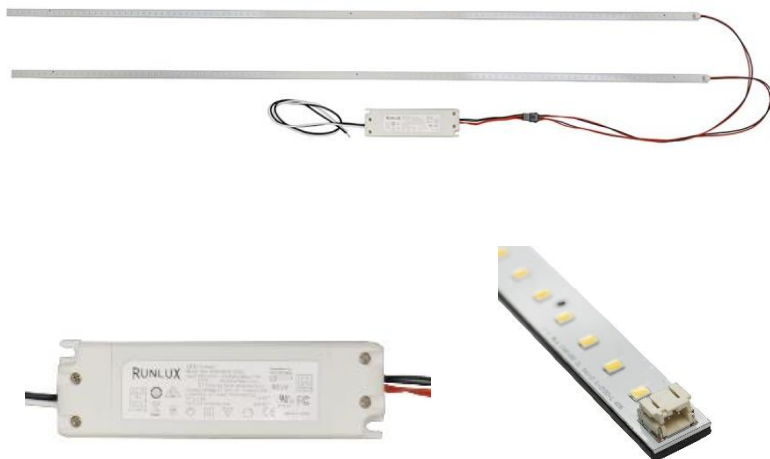
Norman Lamps maintains one of the largest LED lamp inventories in the United States. This inventory, combined with state-of-the-art order processing, allows us to ship your orders accurately and without delay. Norman LED lamps combine the highest level of energy saving efficiency with the highest lumen output levels, longest lifespan, best color rendering, and effective beam spread to create the best in LED lamp products.



Norman Lamps, Inc. - Product Data

# LED-STRIP KIT

48" TROFFER KIT



- 2 x 48" LED Strips
- 40 Watts Total
- 4,500 Lumens
- Retrofits 2 x 4 Troffers
- Retrofit 8' Fluorescent Fixtures
- Magnetic Mount Strips
- Magnetic Mount Driver
- Simple & Quick Installation
- Very High Output LED's
- Many Applications and Uses

## Specifications:

|                |  |                          |
|----------------|--|--------------------------|
| Model:         | LED-24TR40W                              | Retrofits 2 x 4 Troffers |
| Wattage:       | 40 Watts                                 |                          |
| Input Voltage: | 110VAC~277VAC                            |                          |
| Color Temp:    | 4,000k, 5,000k                           |                          |
| Lumens:        | 4,500 Lumens                             |                          |
| Viewing Angle: | 140 Degree Flood                         |                          |
| Efficacy       | >115 lm/W                                |                          |
| Life Hours:    | >40,000 Hours                            |                          |
| Dimensions:    | 0.38" Width x 48" Length                 |                          |
| Replaces:      | Fluorescent Tubes, Incandescent Lighting |                          |

## Features:

- Direct Replacement for Fluorescent Tubes & More
- Powerful Lumen Output: 2 Strips = 4 Tube Output in Troffers
- Available in 4,000k, and 5,000k color temperatures
- 80% Energy Savings
- Magnetically attaches to metal surfaces
- Long Service Life & Extreme Versatility of uses
- Magnetic Strips & Driver for Quick & Easy Installations
- Specialty and General Lighting Applications
- Suitable for damp locations, Coolers, & Troffers
- 5 Year Warranty

## Certifications:



Damp Location Certified 

## Ordering:

|             | Color Temp. |
|-------------|-------------|
| LED-24TR40W | XX          |
|             | 4K (4,000k) |
|             | 5K (5,000k) |

**DLC #** RG-24TR40W40K

**DLC #** RG-24TR40W50K

**Norman Lamps, Inc.**



Norman Lamps maintains one of the largest LED lamp inventories in the United States. This inventory, combined with state-of-the-art order processing, allows us to ship your orders accurately and without delay. Norman LED lamps combine the highest level of energy saving efficiency with the highest lumen output levels, longest lifespan, best color rendering, and effective beam spread to create the best in LED lamp products.



Norman Lamps, Inc. - Product Data

# LED-RR4

LED Can Light Retrofit, 120v

- Retrofits any 4" diameter can light
- 720lm @ 10w
- Fully dimmable
- 120VAC
- Quick & Easy installation
- Low cost LED retrofit
- Huge energy savings



## Specifications:

|                |                                    |
|----------------|------------------------------------|
| Model:         | LED-RR4 (Can Light Retrofit)       |
| Wattage:       | 10 Watts                           |
| Input Voltage: | 120VAC                             |
| Color Temp:    | 3,000k Color Temp.                 |
| Lumens:        | 720 Lumens                         |
| Viewing Angle: | 38 Degree Flood                    |
| Efficacy       | >70lm/W                            |
| Life Hours:    | >50,000 Hours                      |
| Dimensions:    | 5.25" Flange Diameter x 2.75" Deep |
| Replaces:      | 50W~60W Incandescent Bulbs.        |

## Features:

- Direct Replacement for incandescent reflector bulbs
- Powerful Lumen Output
- White trim
- 85% Energy Savings
- Fully dimmable operation
- Very Long Service Life
- Quick & Easy installation
- Very low power consumption
- Suitable for damp locations
- 3 Year Warranty



## Norman Lamps, Inc.

Norman Lamps maintains one of the largest LED lamp inventories in the United States. This inventory, combined with state-of-the-art order processing, allows us to ship your orders accurately and without delay. Norman LED lamps combine the highest level of energy saving efficiency with the highest lumen output levels, longest lifespan, best color rendering, and effective beam spread to create the best in LED lamp products.

## Certifications:



Damp Location Certified 

## Ordering:

| Part Number | Input Voltage | Color Temp. |
|-------------|---------------|-------------|
| LED-RR4     | 120V          | 3K          |

3K (3,000k)



Norman Lamps, Inc. - Product Data

# LED-RR5/6

LED Can Light Retrofit, 120v

- Retrofits any 5" or 6" diameter can light
- 810lm @ 12w
- Fully dimmable
- 120VAC
- Quick & Easy installation
- Low cost LED retrofit
- Huge energy savings



## Specifications:

|                |                                   |
|----------------|-----------------------------------|
| Model:         | LED-RR5/6 (Can Light Retrofit)    |
| Wattage:       | 12 Watts                          |
| Input Voltage: | 120VAC                            |
| Color Temp:    | 2,700k, 3,000k, 4,000k, 5,000k    |
| Lumens:        | 810 Lumens                        |
| Viewing Angle: | 38 Degree Flood                   |
| Efficacy       | >70lm/W                           |
| Life Hours:    | >50,000 Hours                     |
| Dimensions:    | 7.5" Flange Diameter x 3.25" Deep |
| Replaces:      | 65W~75W Incandescent Bulbs.       |

## Features:

- Direct Replacement for incandescent reflector bulbs & CFL's
- Powerful Lumen Output
- White trim
- 85% Energy Savings
- Fully dimmable operation
- Very Long Service Life
- Quick & Easy installation
- Very low power consumption
- Suitable for damp locations
- 3 Year Warranty

## Certifications:



Damp Location Certified 

## Ordering:

| Part Number | Input Voltage | Color Temp.  |
|-------------|---------------|--------------|
| LED-RR5/6   | 120V          | XX           |
|             |               | 27K (2,700k) |
|             |               | 3K (3,000k)  |
|             |               | 4K (4,000k)  |
|             |               | 5K (5,000k)  |

Norman Lamps, Inc.



Norman Lamps maintains one of the largest LED lamp inventories in the United States. This inventory, combined with state-of-the-art order processing, allows us to ship your orders accurately and without delay. Norman LED lamps combine the highest level of energy saving efficiency with the highest lumen output levels, longest lifespan, best color rendering, and effective beam spread to create the best in LED lamp products.



Norman Lamps, Inc. - Product Data

# LED-FP22-45W

2 X 2 Ceiling Panel

| Specification:       | Specification Values:                     |
|----------------------|---|
| Input Voltage        | 100VAC~277VAC                             |
| Power Consumption    | 45W                                       |
| Color Temperature    | 4,000k (Soft White) & 5,000k (Warm White) |
| Lumens               | 3,825lm                                   |
| CRI                  | >83                                       |
| Beam Angle           | 120 Degrees                               |
| Dimmable             | Yes                                       |
| DLC #                | TP120-277/45LED/F22P/EXT/DIM              |
| Life Hours           | >50,000                                   |
| LED Chip             | Samsung™                                  |
| LED Type             | 5630SMD                                   |
| Housing Material     | Aluminum & PMMA (Acrylic)                 |
| Optical Design       | LED Edge Lit Optical Power Beam™          |
| Dimensions           | 600mm X 600mm X 12.5mm                    |
| Panel Weight         | 11 lbs.                                   |
| Packaging Dimensions | 6 Units/Package (800mm X 705mm X 365mm)   |
| Package Weight       | 76 lbs                                    |
| Warranty Period      | 5 Years                                   |



- 45 Watts
- 3,825 Lumens
- 2' x 2' Ceiling, LED Panel Lighting
- Pleasing & Effective Light Output
- Simple & Quick, money saving installation
- Slim Design & White Trim provide a great look
- Damp location rated with sealed panel

**Norman Lamps, Inc.**



Norman Lamps maintains one of the largest LED lamp inventories in the United States. This inventory, combined with state-of-the-art order processing, allows us to ship your orders accurately and without delay. Norman LED lamps combine the highest level of energy saving efficiency with the highest lumen output levels, longest lifespan, best color rendering, and effective beam spread to create the best in LED lamp products.





Norman Lamps, Inc. - Product Data

# LED-FP24-53W

2 X 4 Ceiling Panel

| Specification:       | Specification Values:                     |
|----------------------|---|
| Input Voltage        | 100VAC~277VAC                             |
| Power Consumption    | 53W                                       |
| Color Temperature    | 4,000k (Soft White) & 5,000k (Warm White) |
| Lumens               | 4,505lm                                   |
| CRI                  | >83                                       |
| Beam Angle           | 120 Degrees                               |
| Dimmable             | Yes                                       |
| DLC                  | TP120-277/53LED/F24P/EXT/DIM              |
| Life Hours           | >50,000                                   |
| LED Chip             | Samsung™                                  |
| LED Type             | 5630SMD                                   |
| Housing Material     | Aluminum & PMMA (Acrylic)                 |
| Optical Design       | LED Edge Lit Optical Power Beam™          |
| Dimensions           | 600mm X 1,200mm X 12.5mm                  |
| Panel Weight         | 19 lbs.                                   |
| Packaging Dimensions | 4 Units/Package (1,295mm X 730mm X 340mm) |
| Package Weight       | 89 lbs                                    |
| Warranty Period      | 5 Years                                   |



- 53 Watts
- 4,505 Lumens
- 2' x 4' Ceiling, LED Panel Lighting
- Pleasing & Effective Light Output
- Simple & Quick, money saving installation
- Slim Design & White Trim provide a great look
- Damp location rated with sealed panel

**Norman Lamps, Inc.**



Norman Lamps maintains one of the largest LED lamp inventories in the United States. This inventory, combined with state-of-the-art order processing, allows us to ship your orders accurately and without delay. Norman LED lamps combine the highest level of energy saving efficiency with the highest lumen output levels, longest lifespan, best color rendering, and effective beam spread to create the best in LED lamp products.



Norman Lamps, Inc. - Product Data

# LED-GX53-PUCK

LED 120v



## Specifications:

|                |  |                          |
|----------------|--|--------------------------|
| Model:         | LED-GX53-7W                                | "Puck" light replacement |
| Wattage:       | 7 Watts                                    |                          |
| Input Voltage: | 120VAC                                     |                          |
| Color Temp:    | 2,700k (Warm White), 5,000k (Bright White) |                          |
| Lumens:        | 600 Lumens                                 |                          |
| Viewing Angle: | 180 Degree Flood                           |                          |
| Efficacy       | >85lm/W                                    |                          |
| Life Hours:    | >30,000 Hours                              |                          |
| Dimensions:    | 3.0" Diameter x 1.1" Deep                  |                          |
| Replaces:      | CFL "Puck" Lights                          |                          |

## Features:

- Direct Replacement for CFL GX53 Base puck lamps
- Powerful Lumen Output
- Available in 2,700k and 5,000k color temperatures
- 80% Energy Savings
- Not for use with dimmers
- Long Service Life
- GX53 Turn and Lock Base
- Wide beam light output pattern (Flood)
- Suitable for damp locations
- 1 Year Warranty

## Certifications:



Damp Location Certified 

## Ordering:

|             | Color Temp.  |
|-------------|--------------|
| LED-GX53-7W | XX           |
|             | 27K (2,700k) |
|             | 5K (5,000k)  |

## Norman Lamps, Inc.



Norman Lamps maintains one of the largest LED lamp inventories in the United States. This inventory, combined with state-of-the-art order processing, allows us to ship your orders accurately and without delay. Norman LED lamps combine the highest level of energy saving efficiency with the highest lumen output levels, longest lifespan, best color rendering, and effective beam spread to create the best in LED lamp products.



Norman Lamps, Inc. - Product Data

# LED-PLL40

Compact LED, 120v



- Direct Voltage Operation, 120VAC
- 1,600 Lumens @ 20W
- Compact LED Lamp (CLED)
- 4-Pin, 2G11 Base



## Specifications:

|                |  |
|----------------|--|
| Model:         | LED-PLL40 (2G11 Base)                  |
| Wattage:       | 20 Watts                               |
| Input Voltage: | 120VAC Direct Wire                     |
| Color Temp:    | 5,000k                                 |
| Lumens:        | 1,600 Lumens                           |
| Viewing Angle: | >180 Degree                            |
| Efficacy       | >80lm/W                                |
| Life Hours:    | 50,000 Hours                           |
| Dimensions:    | 1.75" Width x 16.5" Length             |
| Replaces:      | 40W PLL Type CFL with 2G11, 4-Pin Base |

## Certifications:



Damp Location Certified 

## Features:

- Direct Replacement for 40w & 36w CFL lamps (CLED)
- Powerful Lumen Output
- Available in 3,000k, 4,000k, & 5,000k Color Temperature
- 50% Energy Savings
- Non Dimmable Lamp
- Long Service Life
- 2G11 4-Pin Base
- Direct Voltage Operation on Two Pins
- Suitable for damp locations
- 1 Year Warranty

## Ordering:

LED-PLL403K-120V (3,000k)

LED-PLL404K-120V (4,000k)

LED-PLL405K-120V (5,000k)

Norman Lamps, Inc.



Norman Lamps maintains one of the largest LED lamp inventories in the United States. This inventory, combined with state-of-the-art order processing, allows us to ship your orders accurately and without delay. Norman LED lamps combine the highest level of energy saving efficiency with the highest lumen output levels, longest lifespan, best color rendering, and effective beam spread to create the best in LED lamp products.



The **U-Bent<sup>TM</sup>T8** is a High-Output U shape retrofit **LED** tube that outperforms all others

- **T8 High-Output U-Bent LED tube lamp.**
- Ballast Compatible LED Tube for direct retrofit of 32 watt U-bent fluorescent tubes
- Retrofits into any 2 x 2 ballasted lighting fixture with no rewiring required
- Compatible with existing electronic ballast for quick and easy **plug & play installation**
- **Direct wire also available.** (Bypass the ballast to 120VAC ~ 277VAC direct)
- 50% energy savings and a lifespan of greater than 50,000 hours
- Works with the existing lamp sockets
- NSF-2 Certified
- 100% Tube Illumination including the bend
- **1,900 Lumens @ 18 Watts**
- **6" U-Tube spacing**



## Specifications:

|                |   |         |                              |
|----------------|---|---------|------------------------------|
| Model:         | LED-T8-6"-U-Bent                          | Series: | <b>U-Bent<sup>TM</sup>T8</b> |
| Wattage:       | 18 Watts                                  |         |                              |
| Input Voltage: | 120VAC~277VAC for Direct Wire series (DW) |         |                              |
| Color Temp:    | 4,000k, 5,000k                            |         |                              |
| Lumens:        | 1,900lm @ 18 Watts                        |         |                              |
| Viewing Angle: | 240 Degree viewing angle                  |         |                              |
| Efficacy       | >120lm/W                                  |         |                              |
| Life Hours:    | >50,000 Hours                             |         |                              |
| Dimensions:    | 6" Spacing x 22.5" Length                 | Base:   | G-13 Bi-Pin                  |
| Replaces:      | 32W Fluorescent T8 U-Bent tubes           | Pack:   | 12/Case                      |

## Certifications:



Damp Location Certified 

## Features:

- Plug & Play Installation (No Rewiring Required): BC series only
- Available in Ballast Bypass series also: DW (Direct Wire)
- High Lumen Output with full illumination of tube
- LED tubes are labeled with wiring instructions
- Compatible with existing ballast for BC Series
- Direct Wire voltage input is (120VAC~277VAC)
- 50% Energy Savings
- Tube is rated for use in food service industry
- DLC # CH1155 for BC      DLC # CH1155C for DW
- >83 C.R.I.
- 5 Year Warranty



## Norman Lamps, Inc.

Norman Lamps maintains one of the largest LED lamp inventories in the United States. This inventory, combined with state-of-the-art order processing, allows us to ship your orders accurately and without delay. Norman LED lamps combine the highest level of energy saving efficiency with the highest lumen output levels, longest lifespan, best color rendering, and effective beam spread to create the best in LED lamp products.

## Ordering:

| Model              | Series            | Color Temp.        |
|--------------------|-------------------|--------------------|
| <b>LED-T818U19</b> | <b>XX</b>         | <b>XX</b>          |
| <b>T8, 18W</b>     | <b>BC</b>         | <b>4K (4,000k)</b> |
| <b>U-Bent</b>      | <b>Ballast</b>    | <b>5K (5,000k)</b> |
| <b>1,900 Lm</b>    | <b>Compatible</b> |                    |
|                    | <b>DW</b>         |                    |
|                    | <b>Direct</b>     |                    |
|                    | <b>Wire</b>       |                    |



# NORMAN LAMPS, INC.

"DISTRIBUTING LIGHT TO THE WORLD"

TOLL FREE: (800) 992-8020 | LOCAL: (630) 377-3559 | FAX: (866) 482-3916

DISTRIBUTION CENTER:  
1775 WALLACE AVENUE  
ST. CHARLES, ILLINOIS 60174

NORMANLAMPS.COM  
E-MAIL: SALES@NORMANLAMPS.COM

MAILING ADDRESS:  
P.O. Box 3550  
ST. CHARLES, ILLINOIS 60174

