

Property of  
Sensatronics Technologies

CIRCUIT DIAGRAM PERMANENTLY MARKED ON THIS SURFACE

PERMANENTLY CODE THIS SURFACE AS FOLLOWS:  
KLIXON (R) (A3)  
3AT78-2A  
ST5M1422-006A (A2)  
MADE IN U.S.A.  
(XXXX) DATE CODE

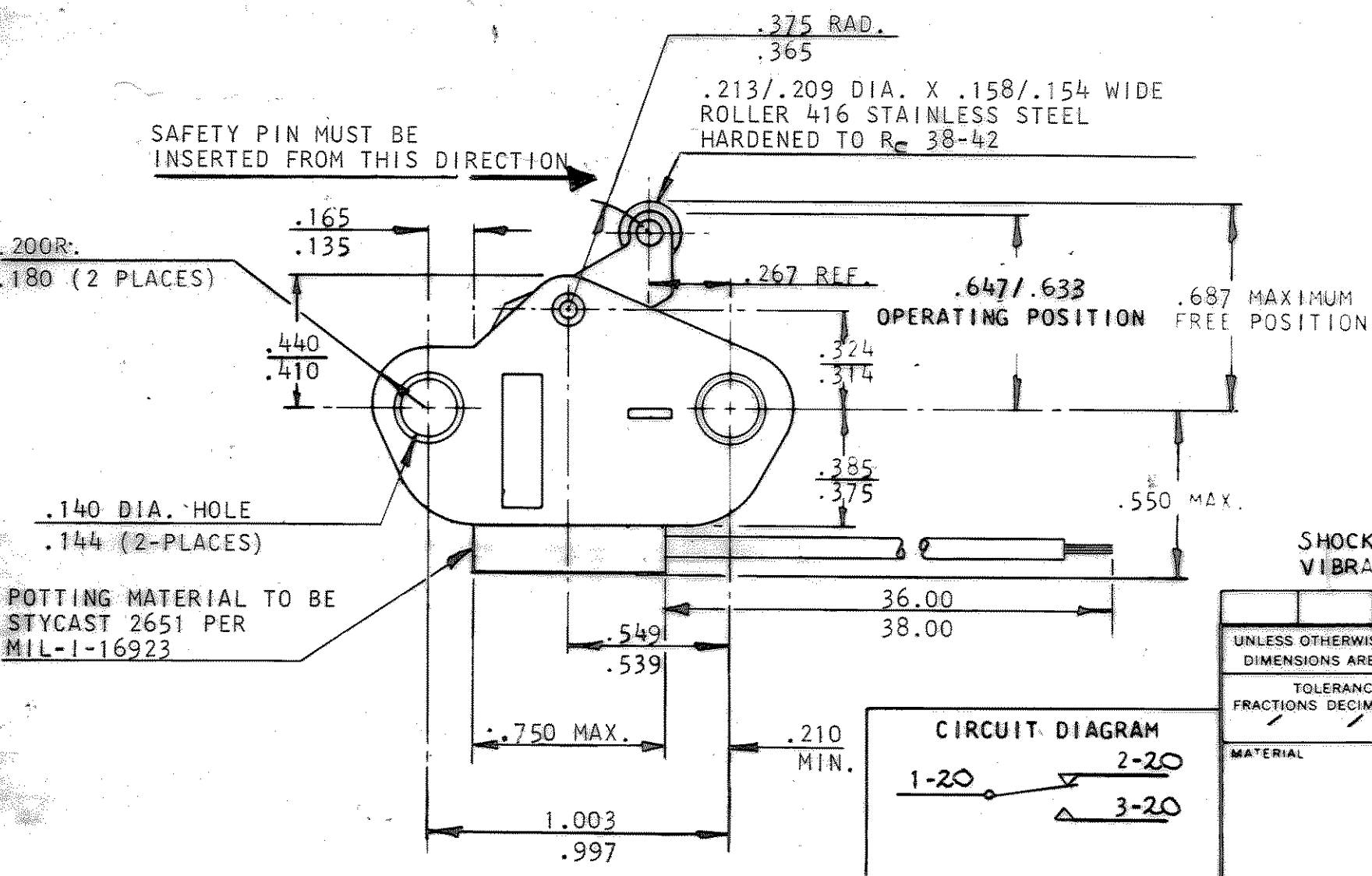
AWG #20 WIRE LEADS PER MIL-W-22759/7-20-9, CODED EVERY 6 INCHES PER CIRCUIT DIAGRAM

DATE CODE EXAMPLE  
YEAR 1 (A1)  
7347  
WEEK

REVISIONS				
ZONE	LTR	DESCRIPTION	DATE	APPROVED
-	-	1ST ISSUE 3AT78-2 CR53251 JPP	12-10-73	D.F.
-	A	SEE CN CR54162 JPP	3-20-74	D.F.
-	B	SEE CN CR55661 R	8-8-74	E.P.
-	C	DELETED SPRING CODING REP CR38729 RJM	4-16-98	JF

CHARACTERISTICS

(A4) ACTUATION FORCE	-----	48 OZ. MAX.
(A5) RELEASE FORCE	-----	12 OZ. MIN.
PRETRAVEL	-----	.040 MAX.
MOVEMENT DIFFERENTIAL	-----	.030 MAX.
OVERTRAVEL	-----	.075 MIN.
LIFE AT RATED LOAD	-----	25,000 CYCLES
MECHANICAL ENDURANCE	-----	50,000 CYCLES
AMBIENT TEMPERATURE RANGE(1ATM)	---	-65°F TO 350°F CONT. 450°F 1 MIN.
INSULATION RESISTANCE		
AT 500 VOLTS D.C.	-----	100 MEGOHMS MIN.
VOLTAGE DROP AT 1 AMP	-----	.15 VOLT
SEAL	-----	CLASS 5 (HERMETIC) PER MIL-S-8805
MAX. ALLOWED LEAKAGE	-----	1X10 <sup>-8</sup> STD. CC HE/SEC.
BACKFILL	-----	DRY NITROGEN
WEIGHT	-----	2.6 OZ. MAX.
DIELECTRIC STRENGTH	-----	TERM. TO TERM. 800 VRMS TERM. TO CASE 1050 VRMS



CURRENT CAPABILITY

SEA LEVEL AND 80,000 FT. ALTITUDE		
LOAD	28 VOLTS D.C.	
RESISTIVE	2 AMPS	
INDUCTIVE	1 AMP L/R .026	
LAMP	1 AMP	

SHOCK RESISTANCE WITHOUT CONTACT CHATTER ----- 50G  
VIBRATION RESISTANCE (10-2000 HZ) WITHOUT CONTACT CHATTER ---- 15G

UNLESS OTHERWISE SPECIFIED DIMENSIONS ARE IN INCHES		BY J. PACHECO	DATE 12-10-73	<b>TEXAS INSTRUMENTS</b> INCORPORATED ATTLEBORO, MASSACHUSETTS, U.S.A.	<b>KLIXON</b> CONTROL PRODUCTS DIVISION
TOLERANCE ON FRACTIONS DECIMALS ANGLES		CH. D. Baker	12-11-73		
MATERIAL		ENG. D. Latun	12-14-73	TITLE ROLLER LEVER SWITCH ENVELOPE DRAWING	
APPROVED D. Latun 12-14-73		SIZE B	CODE IDENT NO. 82647	3AT78-2	
SCALE 2:1		SHEET			