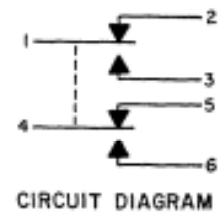


**MICRO SWITCH**  
 FREEPORT ILLINOIS U.S.A.  
 A DIVISION OF HONEYWELL  
 FED. MFG. CODE 9199

SWITCH - ENCLOSED

CATALOG LISTING  
**602EN55-6**



602EN55-6

DRIVING NUMBER

15

ISSUE

15

REVISIONS

A	044851	12 W
B	044851	12 W
C	044851	12 W
D	044851	12 W
E	044851	12 W
F	044851	12 W
G	044851	12 W
H	044851	12 W
I	044851	12 W
J	044851	12 W
K	044851	12 W
L	044851	12 W
M	044851	12 W
N	044851	12 W
O	044851	12 W
P	044851	12 W
Q	044851	12 W
R	044851	12 W
S	044851	12 W
T	044851	12 W
U	044851	12 W
V	044851	12 W
W	044851	12 W
X	044851	12 W
Y	044851	12 W
Z	044851	12 W

DATE

12 W

12 W

12 W

12 W

12 W

12 W

12 W

12 W

12 W

12 W

12 W

12 W

12 W

12 W

12 W

12 W

12 W

12 W

12 W

12 W

12 W

12 W

12 W

12 W

12 W

12 W

12 W

12 W

12 W

12 W

.047 DIA HOLE FOR WIRE LOCKING (6)

.875 ± .030 FREE POSITION

.625 ± .030

1.000 MAX

.250 DIA

.072 ± .004 WIDE X .031 ± .003 DEEP KEYWAY TO WITHIN .250 OF SHOULDER

CORROSION RESISTANT STEEL PLUNGER AND BUSHING

.688 ± .030 DIA

.500 MAX

72.000 MIN

(6) NO. 20 WIRE LEAD PER MIL-W-22759/7 MARKED WITH CIRCUIT IDENTIFICATION AND WIRE GAGE (1-20, 2-20, ETC) PER MIL-W-5088

.388 .47 SPHER R

15/32 - 32 UNS THREAD TO WITHIN .093 OF SHOULDER

CORROSION RESISTANT STEEL HEX NUT .62 ACROSS FLATS X .125 THICK (2) / 5

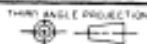
CORROSION RESISTANT STEEL INTERNAL TOOTH LOCKWASHER .60 DIA X .048 REF THICK (MS 35333-136) / 5

CORROSION RESISTANT STEEL KEYING WASHER, .72 DIA X .031 THICK, TAB .110 WIDE / 5

**NOTES**

- 1 - CORROSION RESISTANT STEEL ENCLOSURE
  - 2 - CIRCUIT DIAGRAM, FED MFG. CODE, DATE CODE AND CAT. LIST. ARE SHOWN ON NAMEPLATE
  - 3 - SWITCH SEALED PER MIL-PRF-8805 SYMBOL 4
  - 4 - COINCIDENCE OF OPERATING AND RELEASING POINTS: .010 OF PLUNGER TRAVEL
- 5 HARDWARE MAY BE PACKAGED UNASSEMBLED PER MIL-PRF-8805

THIS DRAWING COVERS A PROPRIETARY ITEM AND IS THE PROPERTY OF MICRO SWITCH, A DIVISION OF HONEYWELL. THIS DRAWING IS NOT TO BE COPIED OR USED WITHOUT THE APPROVAL OF MICRO SWITCH.



SCALE FULL

DO NOT SCALE PRINT

CHARACTERISTICS	ELECTRICAL DATA
OPERATING FORCE --- 3-6 LB	CONTACT ARRANGEMENT
FULL CASTEREL FORCE --- 17 LB MAX	SPDT (2)
RELEASE FORCE --- 2 LB MIN	LOAD
PRETRAVEL --- .040 MAX	28 VDC
DIFFERENTIAL TRAVEL --- .020 MAX	SEA LEVEL 50,000 FT.
OVERTRAVEL --- .185 MIN	RES 7 7
	END 0 2.5
	MOTOR 4

RES	END	MOTOR
7	0	4
7	2.5	

DESIGN UNITS	WEIGHT
6.2 OZ MAX	

FORMTEK