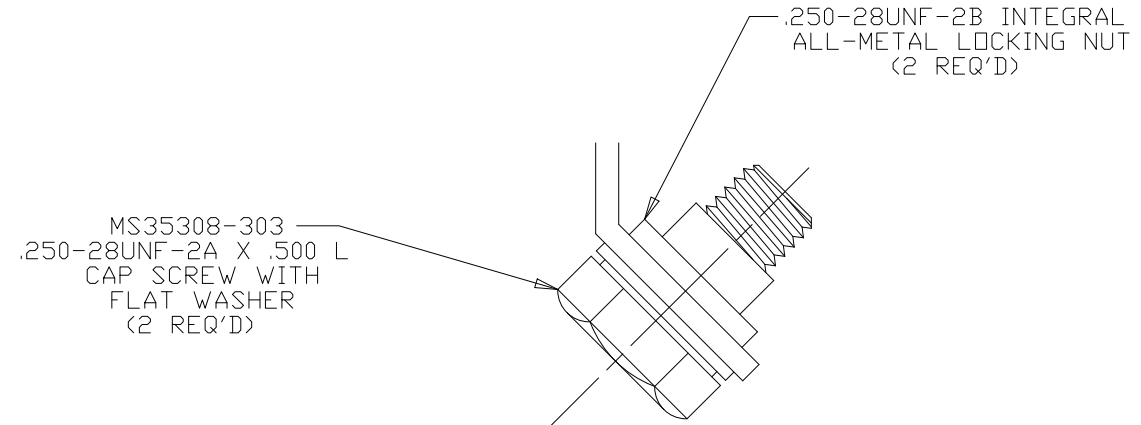
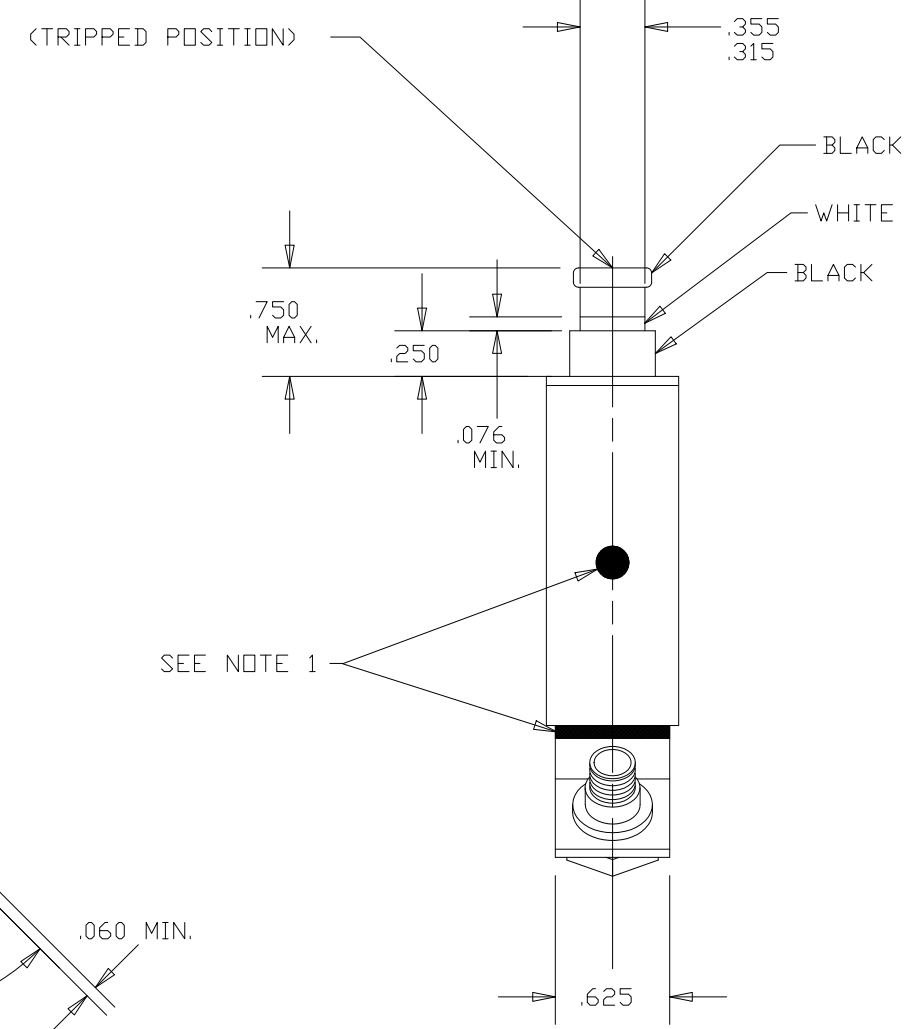
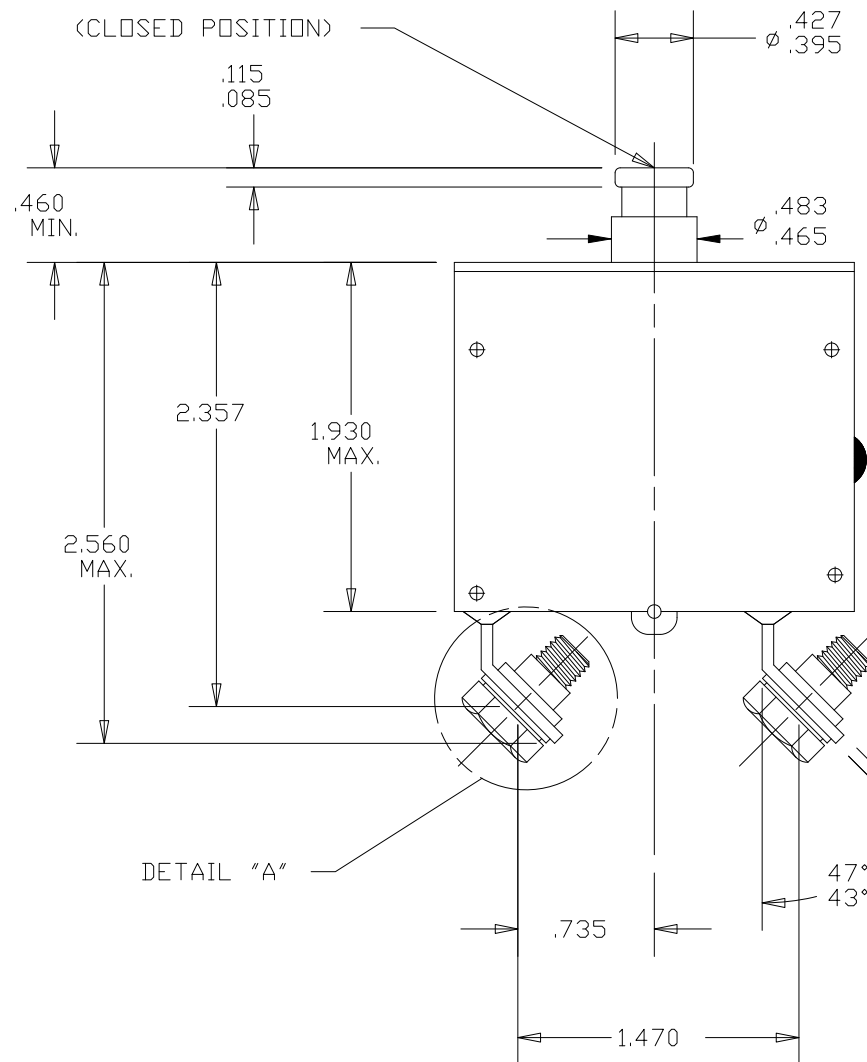
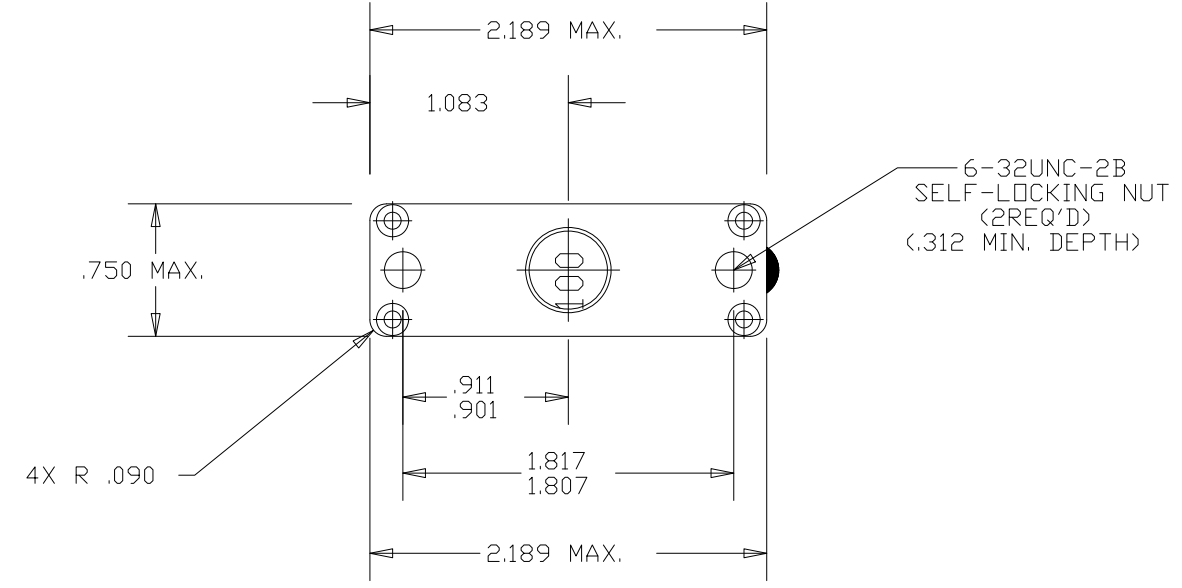


Property of
Sensata Technologies

ZONE	REV.	REVISION DESCRIPTION	ECN NO.	DATE
C3	E	ADD .483/.465; PD	ECO-087156	26-APR-2013



DETAIL "A"

6752-100-100	MS25361-100	100
6752-100-90	MS25361-90	90
6752-100-80	MS25361-80	80
6752-100-75	MS25361-75	75
6752-100-70	MS25361-70	70
6752-100-60	MS25361-60	60
6752-100-50	MS25361-50	50
PART NO.	MS PART NO.	AMP RATING

PERFORMANCE CHARACTERISTICS
 TESTED TO AND MEETS REQUIREMENTS OF MIL-C-5809

1. CALIBRATION	50-100 AMPS				
AMBIENT TEMPERATURE	MINIMUM ULTIMATE TRIP	MAXIMUM ULTIMATE TRIP	200% TIME	400% TIME	600% TIME
25°C (77°F)	105%	138%	15-65 SEC	2-10 SEC	1-4 SEC
-40°C (-40°F)	125%	165%			
70°C (160°F)	70%	125%			
2. INTERRUPTING CAPACITY					
120 VAC, 400Hz	3500 AMPS				
28 VDC	6000 AMPS				
3. ENDURANCE					
MECHANICAL (NO LOAD)	5000 CYCLES				
AC 120 V, 400 Hz:					
RESISTIVE	5000 CYCLES				
INDUCTIVE	5000 CYCLES				
DC 28 V:					
RESISTIVE	5000 CYCLES				
INDUCTIVE	2500 CYCLES				
4. OVERLOAD CYCLING	100 CYCLES AT 200% RATED LOAD				
5. VOLTAGE DROP	50-100 AMPS: 0.3 V MAX.				
6. WEIGHT	0.25 LBS (113.6g) MAX.				
7. OPERATING FORCES					
PULLOUT:	12 LBS MAX				
RESET:	16 LBS MAX.				
8. DIELECTRIC STRENGTH	1500 VAC rms				
9. INSULATION RESISTANCE	100 MEGOHMS AT 500 VDC				
10. MAX. OPERATING ALTITUDE	70,000 FEET				
11. VIBRATION	10g, 50-500 Hz				
12. SHOCK	30g, 11 msec DURATION				
13. ACCELERATION	10g				
14. SAND AND DUST	12 HOURS				
15. CORROSION	SALT SPRAY 50 HOURS				
16. MOISTURE RESISTANCE	240 HOURS				
17. EXPLOSION PROOF	WHILE INTERRUPTING RUPTURE CURRENTS				

NOTES:

- EPOXY SURFACES ARE NON-DIMENSIONED. ENVELOPE DIMENSIONS DO NOT APPLY TO PROJECTED EPOXY SURFACES.
- TERMINAL HARDWARE MUST BE PACKED SEPARATELY BECAUSE OF LOCKING NUTS.
- MAX TORQUE OF 32 IN-LB

FOR REFERENCE ONLY, CHECK LATEST REVISION BEFORE USE.
 PARTS MADE TO THIS PRINT MUST CONFORM TO E9898 REV. E

DRAWN CHAS. FLEURANT DATE 06-DEC-1994 ENGINEER	SENSATA TECHNOLOGIES PROPRIETARY AND CONFIDENTIAL. NEITHER THIS PRINT NOR THE INFORMATION CONTAINED HEREON IS TO BE USED AGAINST THE INTERESTS OF SENSATA TECHNOLOGIES OR AGAINST THE INTERESTS OF ANY OF ITS AFFILIATED COMPANIES OR WHOLLY OWNED SUBSIDIARIES.
APPROVED K.B. GASSER DATE	
APPROVED D.R. PETRIE DATE	
APPROVED PETE BERG DATE	INTERPRET DIMENSIONING AND TOLERANCING PER ASME Y14.5-2009. UNLESS OTHERWISE SPECIFIED DIMENSIONS ARE IN INCHES. TOLERANCES DECIMALS ANGLES ±.031
DO NOT SCALE DRAWING	THIRD ANGLE PROJECTION

Sensata Technologies 529 PLEASANT STREET
 P.O. BOX 2964
 ATTLEBORO, MA 02703

TITLE: 6752-100 TYPE
 PUSH PULL CIRCUIT BREAKER
 ENVELOPE DRAWING

SIZE C	DWG NO. 6752-100	REV. E
SCALE 1:1	AUTOCAD	SHEET 1 OF 1

DEVICE: PROJECT: 1