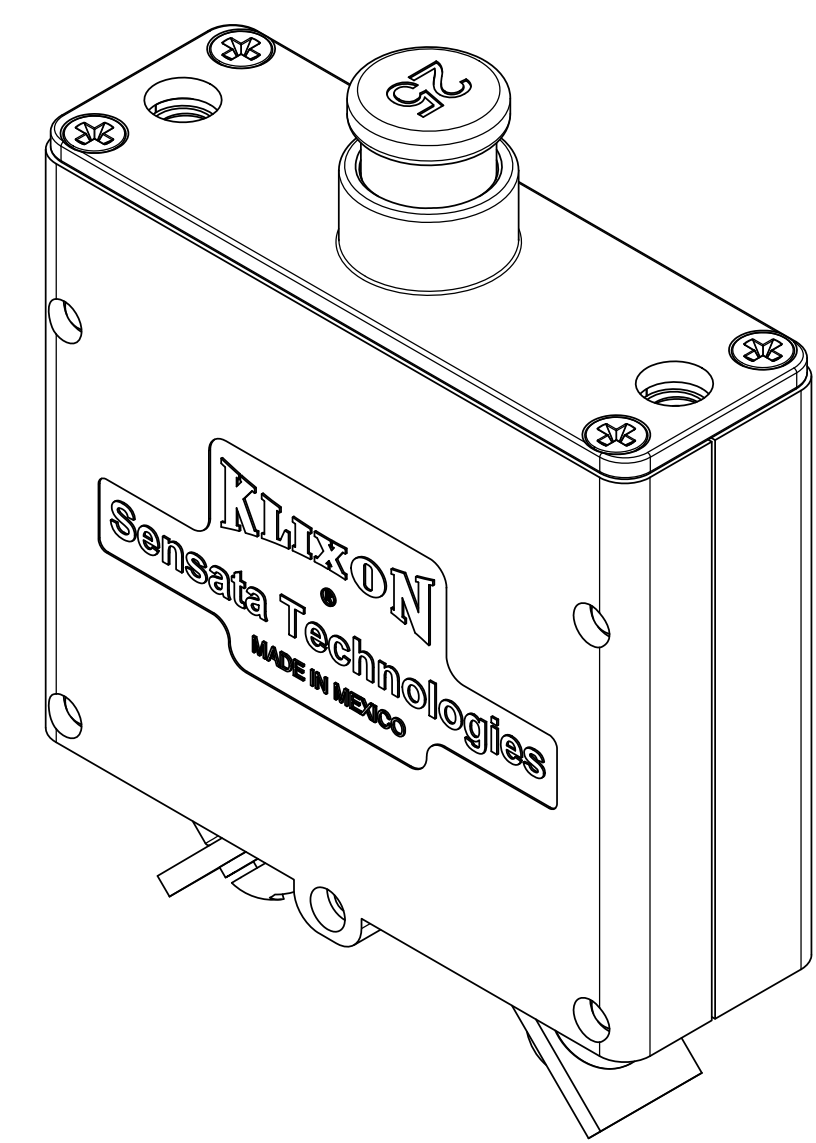
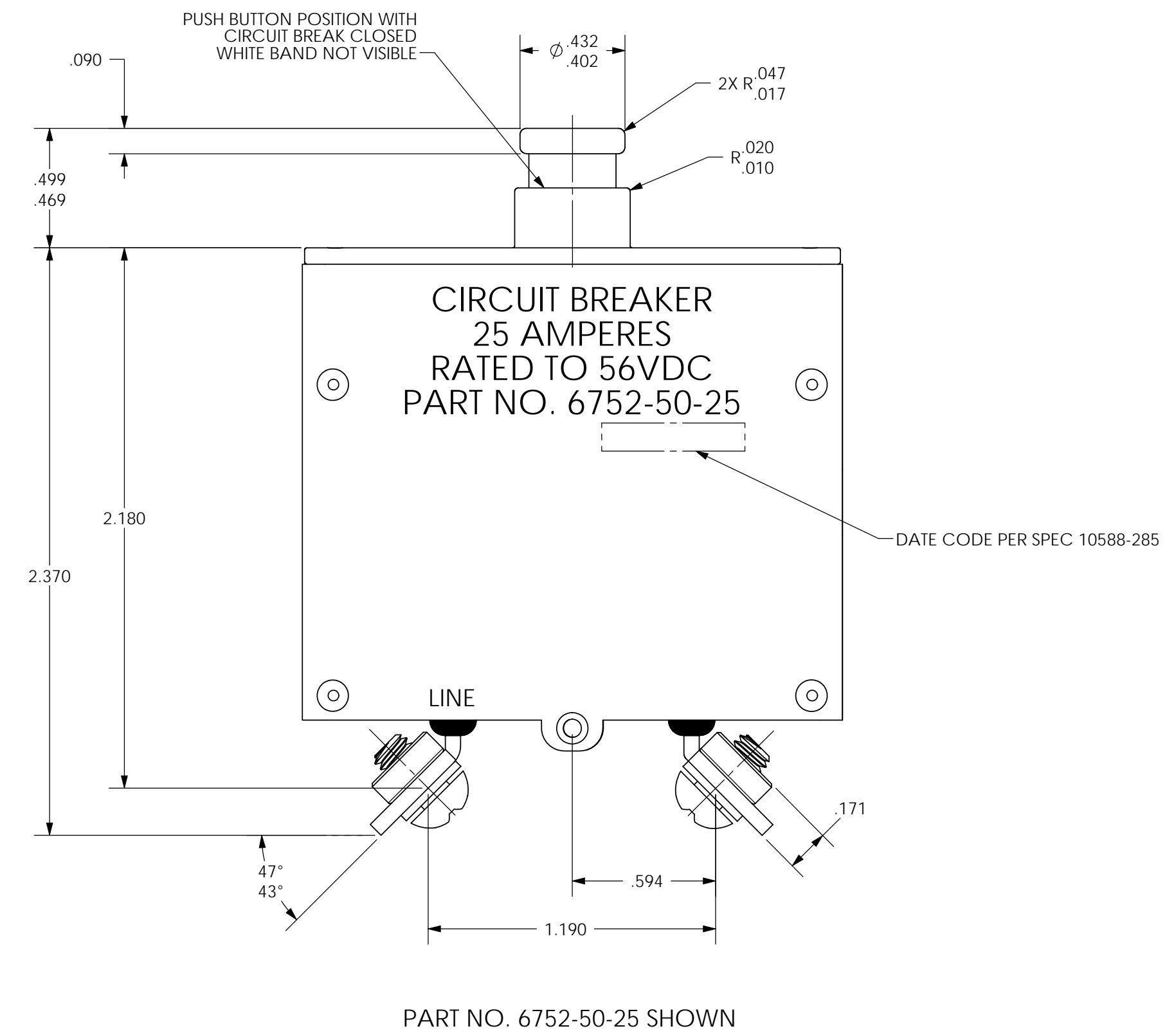
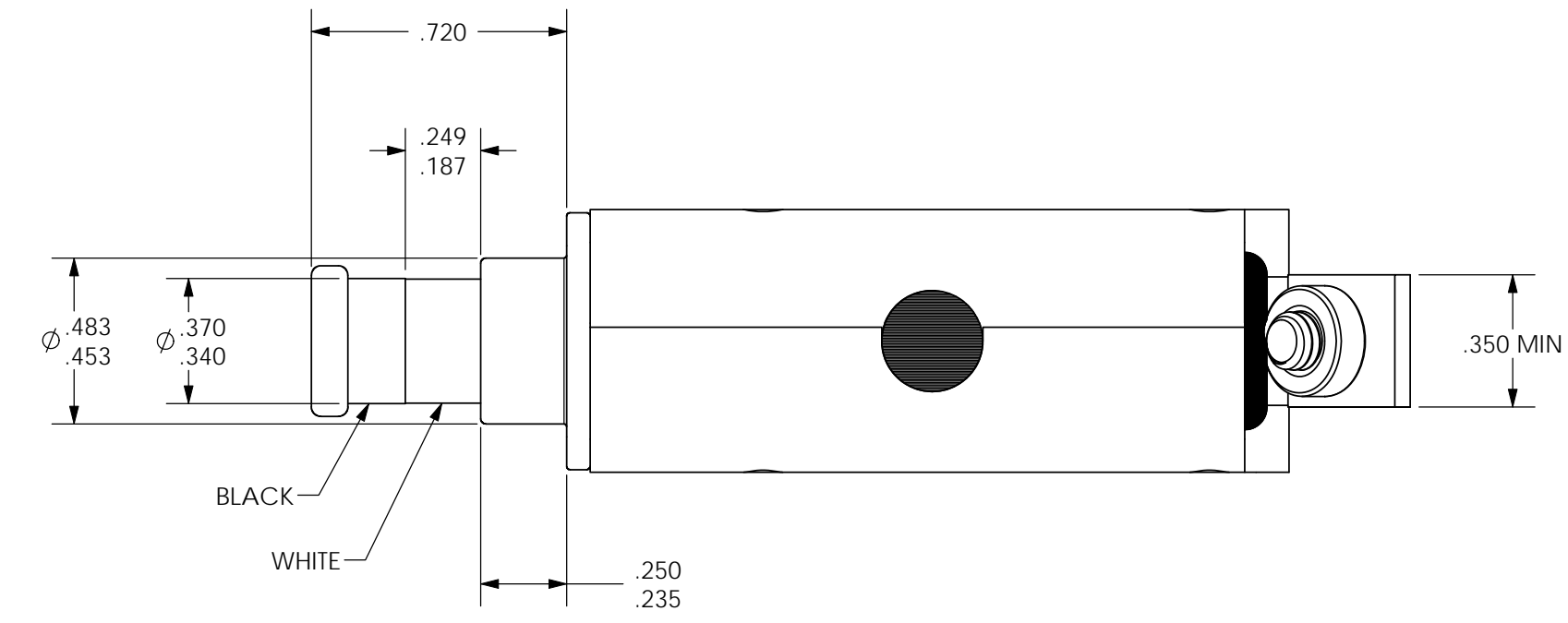
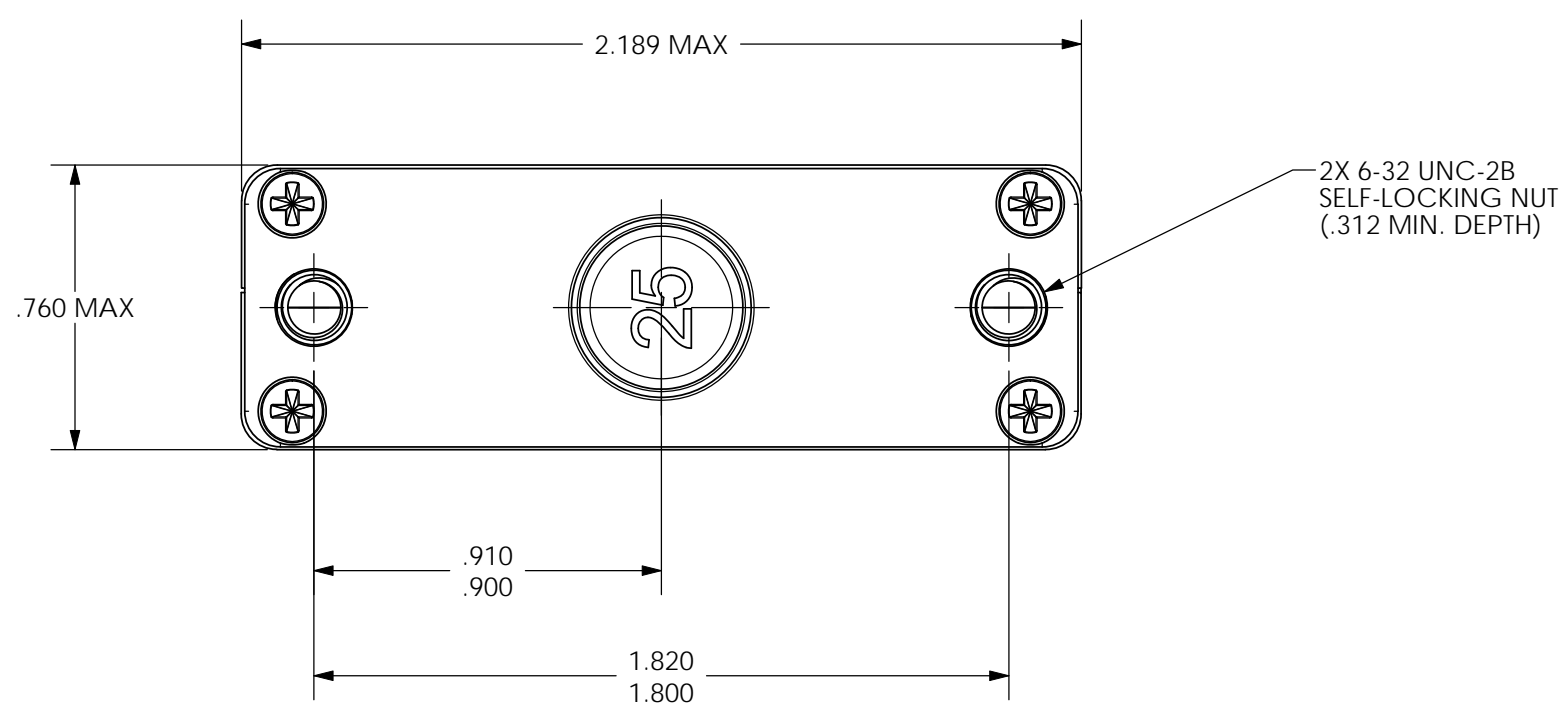
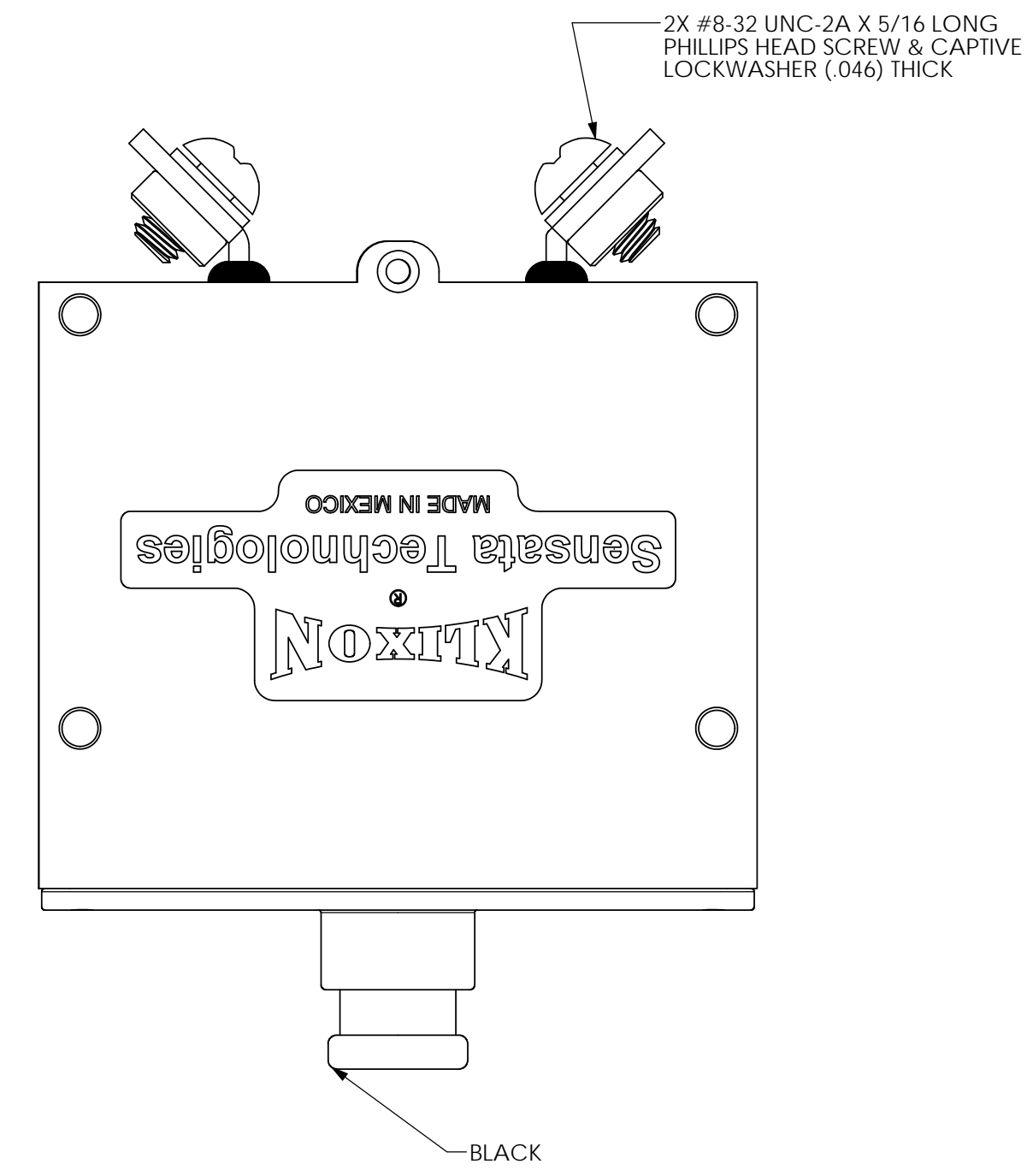


Property of
Sensata Technologies



ZONE	REV.	REVISION DESCRIPTION	ECN NO.	DATE
D6	G	RE-DOCUMENTED IN SOLIDWORKS. "2X #8-32 UNC-2A..." WAS "#8-32 NC-2A..." AND PICTORIALLY CORRECTED SCREWS.	ECO-062133	27-JAN-2011
C5	A4	ADDED SENSATA & KLIXON LOGO. ADDED "Ø" SYMBOL TO DIMENSIONS. 453-.483 & .340-.370. ADDED ISOMETRIC VIEW: GML		

PERFORMANCE CHARACTERISTICS
TESTED PER AND MEETS REQUIREMENTS OF AS58091-A1
AT 54±4% VDC WITH NOTED EXCEPTIONS:

AMBIENT TEMPERATURE	5-50 AMPS		200% TIME	400% TIME	1,000% TIME
	MINIMUM ULTIMATE TRIP	MAXIMUM ULTIMATE TRIP			
25°C (77°F)	105%	138%	14-65 SEC	2-10 SEC	.30-1.5 SEC.
-53.9°C (-65°F)	125%	165%			
93.3°C (200°F)	100%	138%			

1. CALIBRATION
PER TABLE VII, TEST D @ ALTITUDE OF 50,000 FT. FOR 15-50A
@ ALTITUDE OF 42,000 FT. FOR 5-10A

RATED CURRENT	
54±4% VDC	5-50 AMPS 2500 AMPS

THE BREAKER MAY FAIL-SAFE DURING THE INTERRUPTING CAPACITY TEST. FOR THIS TEST, A FAIL-SAFE CONDITION EXISTS IF THE BREAKER IS UNABLE TO CARRY AN ELECTRICAL LOAD, BECAUSE OF ELECTRICAL DAMAGE, IN THE CLOSED/RESET POSITION. THE LEAKAGE CURRENT BETWEEN THE LINE-LOAD TERMINALS MUST BE LESS THAN 1 MILLIAMPERE AT 120VAC, 60Hz WITH THE BREAKER IN THE CLOSED/RESET STATE.

3. ENDURANCE
MECHANICAL (NO LOAD) 10,000 CYCLES

54±4% VDC:	
RESISTIVE	5000 CYCLES
INDUCTIVE	2500 CYCLES

4. OVERLOAD CYCLING 50 CYCLES AT 200% RATED LOAD

5. COORDINATION BETWEEN RATINGS

5-10
7.5-15
15-35
10-20

6. MAX OPERATING ALTITUDE 50,000 FT. FOR 15-50A
42,000 FT. FOR 5-10A

7. VOLTAGE DROP 7 1/2-50 AMPS AT 0.3 V MAX
5 AMPS AT .4 V MAX.

8. WEIGHT 0.25 LBS (113.6g) MAX

9. OPERATING FORCES
PULLOUT: 12 LBS MAX
RESET: 16 LBS MAX

10. DIELECTRIC STRENGTH 1500 VAC rms (SEA LEVEL)
500 VAC rms (50,000 FT.)

11. INSULATION RESISTANCE 100 MEGOHMS AT 500 VDC

12. VIBRATION 10g, 50-500 Hz

13. SHOCK 30g, 11 msec DURATION

14. ACCELERATION 10g

15. CORROSION SALT SPRAY 50 HOURS

16. MOISTURE RESISTANCE 240 HOURS

17. RECLOSING NO AUTOMATIC RECLOSE

18. TRIP FREE RESETTABLE ONLY AFTER MOVING THE ACTUATOR TO THE FULL OPEN POSITION

19. EXPLOSION PROOF WHILE INTERRUPTING RUPTURE CURRENTS

20. SAND AND DUST 12 HOURS

NOTES:

- EPOXY SURFACES ARE NON-DIMENSIONED, ENVELOPE DIMENSIONS DO NOT APPLY TO PROJECTED EPOXY SURFACES.
- OPERATING VOLTAGE RATED TO 56.2VDC MAX.

6752-50-50		50
6752-50-35		35
6752-50-25		25
6752-50-20		20
6752-50-15		15
6752-50-10		10
6752-50-71/2		7 1/2
6752-50-5		5
PART NO.	MS PART NO.	AMP RATING

FOR REFERENCE ONLY. CHECK LATEST REVISION BEFORE USE. PARTS MADE TO THIS PRINT MUST CONFORM TO E9898 REV. E.		529 PLEASANT STREET P.O. BOX 2964 ATTLEBORO, MA 02703	
DRAWN P.DESAUTEL DATE 05-SEP-2006	SENSATA TECHNOLOGIES PROPRIETARY AND CONFIDENTIAL. NEITHER THIS PRINT NOR THE INFORMATION CONTAINED HEREON IS TO BE USED AGAINST THE INTERESTS OF SENSATA TECHNOLOGIES OR AGAINST THE INTERESTS OF ANY OF ITS AFFILIATED COMPANIES OR WHOLLY OWNED SUBSIDIARIES.	TITLE 6752-50 TYPE PUSH PULL CIRCUIT BREAKER ENVELOPE DRAWING	
ENGINEER K.WASHBURN DATE 05-SEP-2006	INTERPRET DIMENSIONING AND TOLERANCING PER ASME Y14.5-2009. UNLESS OTHERWISE SPECIFIED DIMENSIONS ARE IN INCHES. TOLERANCES DECIMALS ANGLES X.XXX ±.031	SIZE D	DWG NO. 6752-50
APPROVED B.BENTLEY DATE 05-SEP-2006	DO NOT SCALE DRAWING	THIRD ANGLE PROJECTION	REV G
APPROVED A.NAULT DATE 05-SEP-2006	SCALE 2:1	SOLIDWORKS	SHEET 1 OF 1