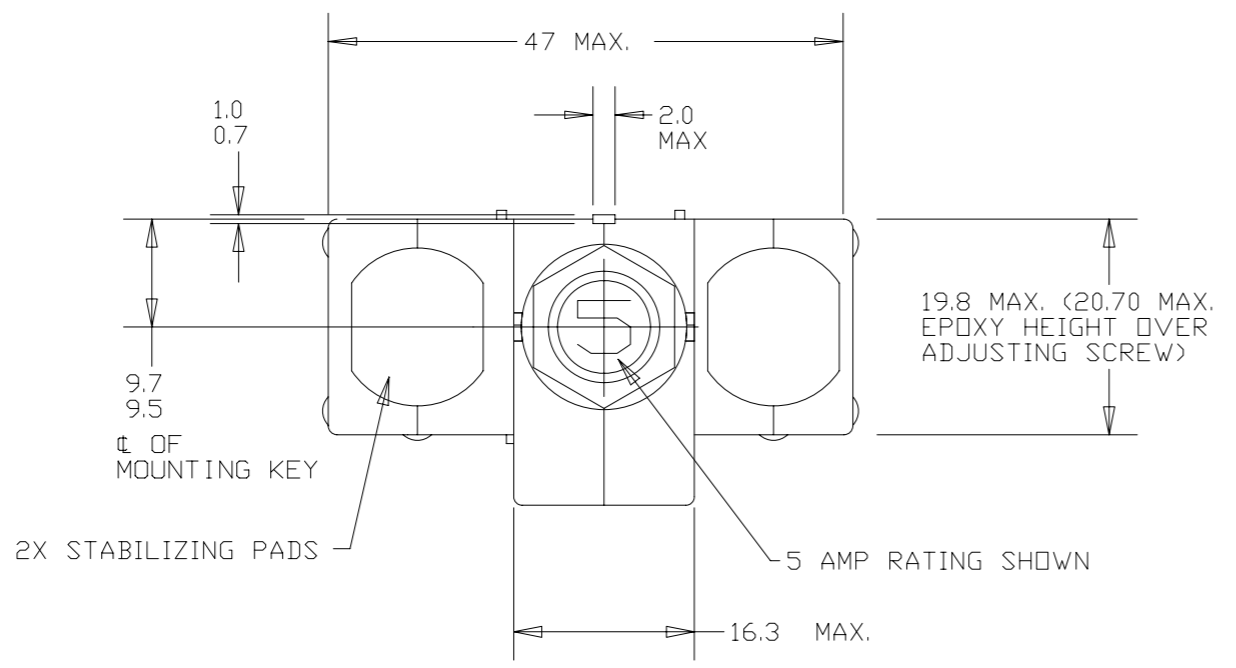


Property of  
Sensata Technologies

ZONE	REV.	REVISION DESCRIPTION	ECN NO.	DATE
B4	M	48°/42° DIM WAS 55°/40°; PAF	ECN0042078	30-MAY-2008



PERFORMANCE CHARACTERISTICS

DETAIL PERFORMANCE PER AEROSPATIALE SPEC. ASNE0731-001 AND ASNE0731-005

OVERLOAD CYCLING	100 CYCLES AT 200% RATING				
VIBRATION	CURVE "J" OF EUROCAE ED-14B 3G'S, 2000HZ				
MECHANICAL SHOCK	50 G'S				
ACCELERATION	10 G'S				
CORROSION	SALT SPRAY 50 HOURS				
HUMIDITY	10 DAYS				

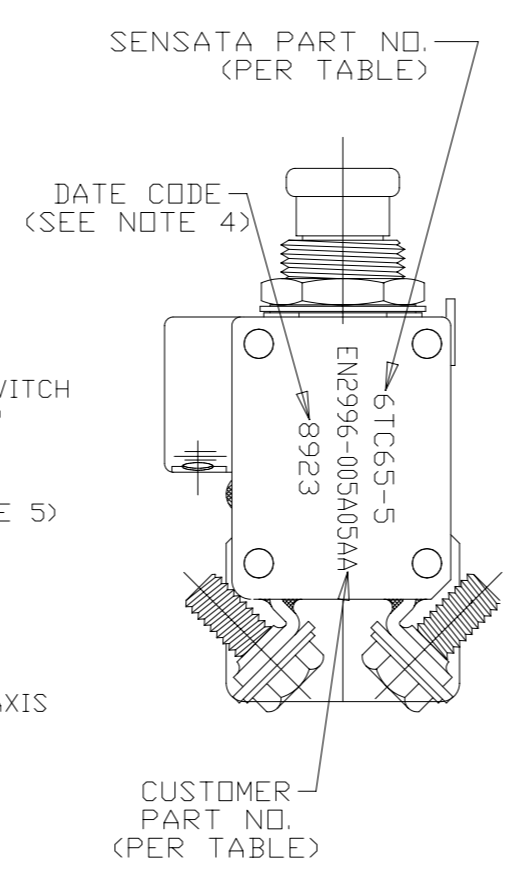
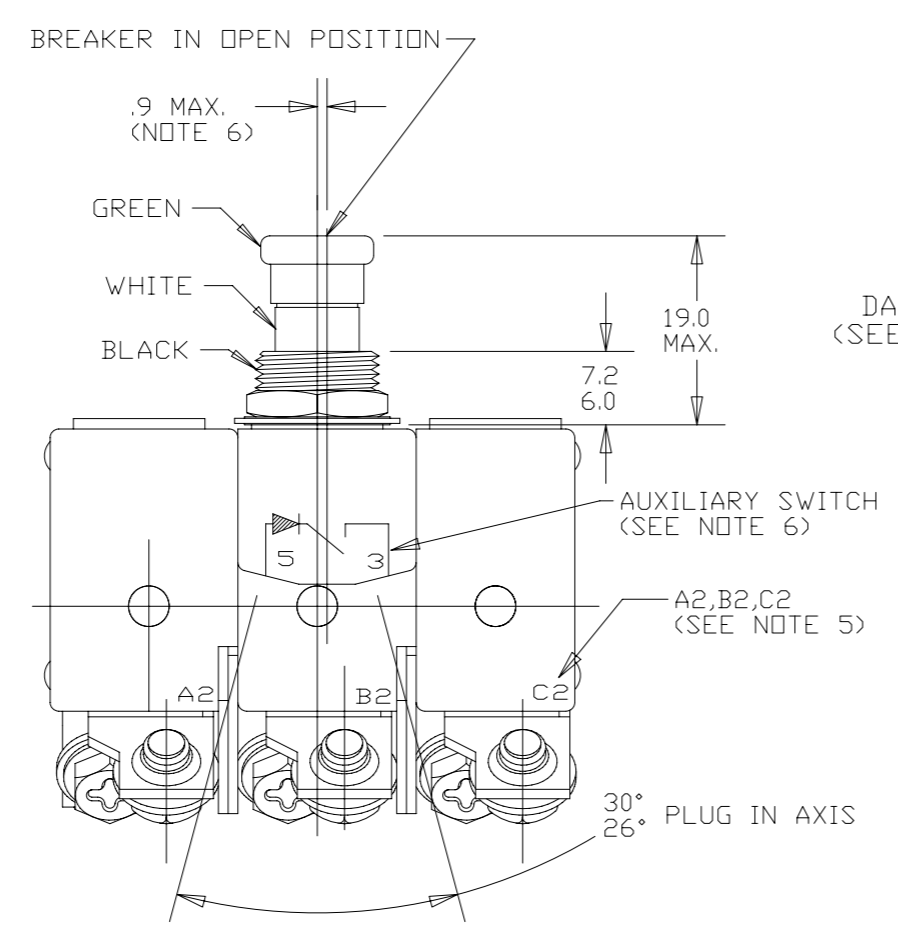
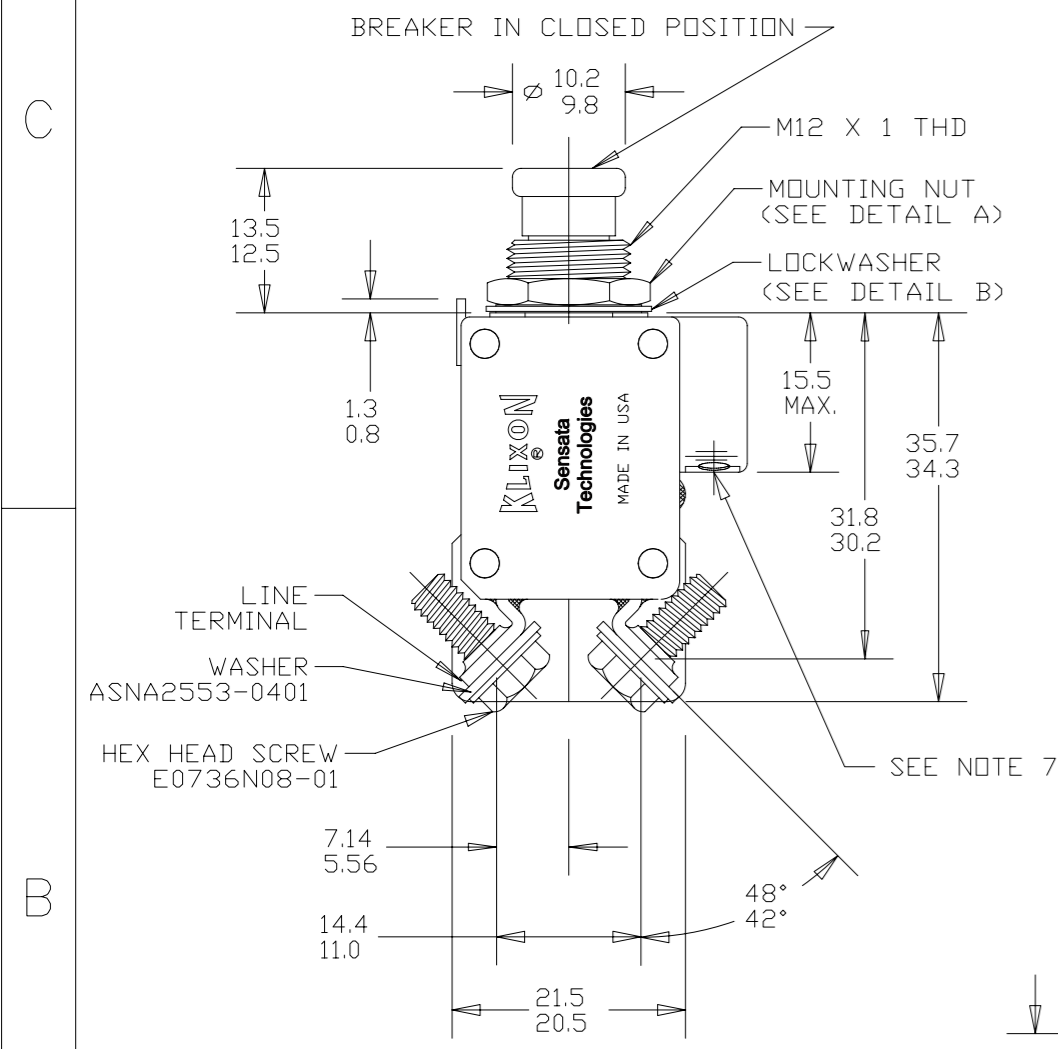
ENDURANCE:

115/200 VAC	360-800 HZ INDUCTIVE	2500 CYCLES
MECHANICAL	NO LOAD	5000 CYCLES

SINGLE \* OR THREE PHASE CALIBRATION:  
2 AMP THROUGH 25 AMP

TEMPERATURE	MIN. ULT. TRIP	MAX. ULT. TRIP	200%	500%	1000%
+23°C	110% RATING	140% RATING	2-20 SEC.	0.5-2.8 SEC.	0.035-0.6 SEC.
-55°C	110% RATING	160% RATING	≤40 SEC.	0.5-2.8 SEC.	0.035-0.6 SEC.
+90°C	90% RATING	140% RATING	≥1.5 SEC.	0.5-2.8 SEC.	0.035-0.6 SEC.

RUPTURE: 2 AMP THROUGH 25 AMP      120 VAC, 400 HZ      1800 AMPS AC (RMS)



MAXIMUM OPERATING FORCES

PULL OUT	53.4 N MAX.
RESET	53.4 N MAX.

OPERATING ALTITUDE: 15,000 M MAX.

WEIGHT: 68.0 GRAMS MAX. (WITH HARDWARE)

VOLTAGE DROP:

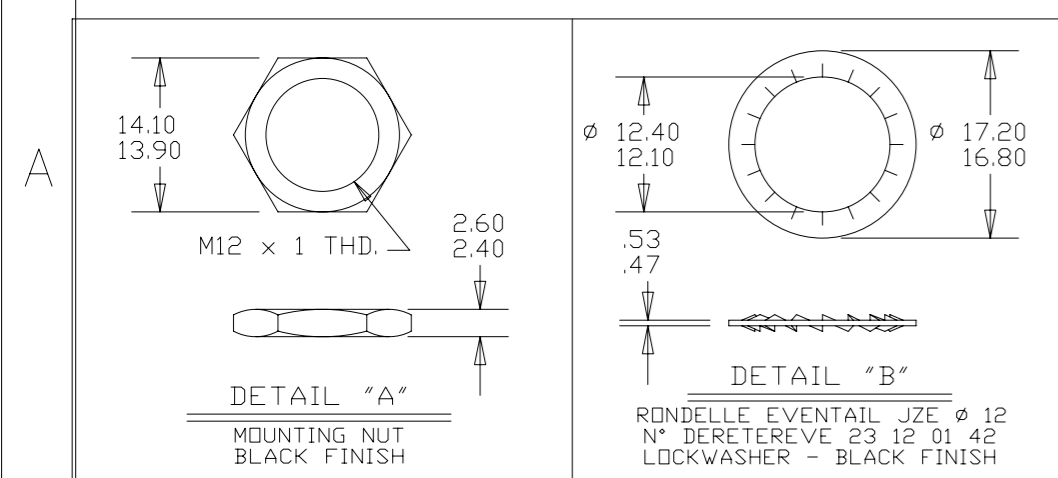
2 AMP	0.75 VOLTS MAX.
2.5 AMP	0.70 VOLTS MAX.
3 AMP	0.55 VOLTS MAX.
5 AMP	0.35 VOLTS MAX.
7.5 AMP	0.30 VOLTS MAX.
10 AMP	0.30 VOLTS MAX.
15 AMP	0.25 VOLTS MAX.
20 AMP	0.25 VOLTS MAX.
25 AMP	0.25 VOLTS MAX.

\* SINGLE PHASE MAXIMUM ULTIMATE TRIP VALUES APPLY WITH OTHER TWO PHASES CARRYING 90% OF RATED CURRENT

AUXILIARY SWITCH CHARACTERISTICS

SIGNALIZATION CONTACT	TYPE OF LOAD	28 VDC	5 VDC
		RESISTIVE	0.5 A
	LAMP	0.2 A	

SENSATA PART NO.	CUSTOMER PART NO.	WITHOUT TERMINAL HARDWARE
6TC65-25	EN2996-005A25AA	EN2996-005A25AB
6TC65-20	EN2996-005A20AA	EN2996-005A20AB
6TC65-15	EN2996-005A15AA	EN2996-005A15AB
6TC65-10	EN2996-005A10AA	EN2996-005A10AB
6TC65-7 1/2	EN2996-005A7A5A	EN2996-005A7A5B
6TC65-5	EN2996-005A05AA	EN2996-005A05AB
6TC65-3	EN2996-005A03AA	EN2996-005A03AB
6TC65-2 1/2	EN2996-005A2A5A	EN2996-005A2A5B
6TC65-2	EN2996-005A02AA	EN2996-005A02AB



- NOTES:
- EPOXY SURFACES ARE NON-DIMENSIONED, ENVELOPE DRAWING DIMENSIONS DO NOT APPLY TO THESE PROJECTED EPOXY SURFACES.
  - TERMINAL AND MOUNTING HARDWARE MAY BE PACKAGED RATHER THAN INSTALLED.
  - COUNTRY OF ORIGIN IS SHOWN FOR ILLUSTRATION PURPOSES ONLY. COUNTRY OF ORIGIN TO BE IDENTIFIED AS REQUIRED.
  - DATE CODE PER 10588-285.
  - ALL MARKINGS TO BE MADE IN APPROXIMATE POSITIONS SHOWN WITH BLACK INK PER 12506-70, 2MM HIGH CHARACTERS.
  - DISTANCE BETWEEN THE DEVICE AND AUXILIARY SWITCH CENTERLINES.
  - RECOMMENDED PIN CONTACT: GAUGE 20 PER EN3155-016M2018 OR EQUIVALENT.

FOR REFERENCE ONLY, CHECK LATEST REVISION BEFORE USE. PARTS MADE TO THIS PRINT MUST CONFORM TO E9898 REV. E

DRAWN D. STAPLES DATE 24-OCT-1996	ENGINEER J. FOWLER DATE 24-OCT-1996	APPROVED A. ANDRES DATE 24-OCT-1996	APPROVED P. BERG DATE 24-OCT-1996	<p>SENSATA TECHNOLOGIES PROPRIETARY AND CONFIDENTIAL. NEITHER THIS PRINT NOR THE INFORMATION CONTAINED HEREON IS TO BE USED AGAINST THE INTERESTS OF ANY OF ITS AFFILIATED COMPANIES OR WHOLLY OWNED SUBSIDIARIES.</p> <p>UNLESS OTHERWISE SPECIFIED DIMENSIONS ARE IN MILLIMETERS</p> <p>TOLERANCES DECIMALS      ANGLES</p>	<p>529 PLEASANT STREET P.O. BOX 2964 ATTLEBORO, MA 02703</p> <p><b>Sensata Technologies</b></p> <p>TITLE: PART NO. 6TC65 AMBIENT COMPENSATED, HIGH TEMP. CIRCUIT BREAKER PUSH-PULL, TRIP FREE ENVELOPE DRAWING</p>
<p>DO NOT SCALE DRAWING</p> <p>THIRD ANGLE PROJECTION</p>			<p>SIZE: A2</p> <p>DWG NO.: <b>6TC65</b></p> <p>REV.: M</p>	<p>SCALE: 4:1</p> <p>AUTOCAD</p> <p>SHEET 1 OF 1</p>	

DEVICE: 6TC PROJECT: 1041