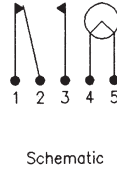
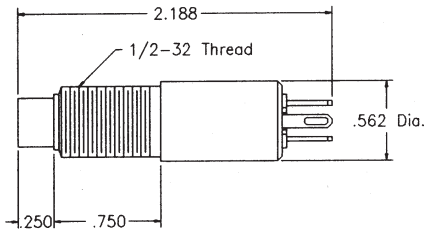


Table of Contents

PRESSLITE		
DESCRIPTION	TYPE	PAGE NUMBER
Friction Cap Bases		
Alternate Action 5 Amp S.P.D.T Form C	516	17
General Purpose Indicator Base	532	17
Momentary Action S.P.D.T. - 3 Amp	545	17
Momentary Action S.P.D.T. - 5 Amp	518	18
Alternate or Momentary Action - 10.1 Amp D.P.D.T. Form C	5720	18
Low Profile Switches		
Low Profile Switch Snap Action - 5 Amp	616	18
Low Profile Switch - 10.1 Amp Snap Action	6710/6720	19
Snap In Switch		
Snap-In Switch Momentary Action - 5 Amp	591	19

OPTOLITE		
DESCRIPTION	TYPE	PAGE NUMBER
General Purpose		
Incandescent Subminiature Size T-1	99-33180	20
Incandescent Miniature Size T-1 3/4	11-33480	20
Incandescent Miniature Size T-1 3/4	14-30080	20
Incandescent General Purpose Size T-3 1/4	13-VM305	21
Incandescent Miniature Size T-1 3/4	14-35180	21
Incandescent Miniature Size T-1 3/4	14-32280	21
Incandescent Miniature Size T-1 3/4	59-52480	22
Neon Miniature Size T-1 3/4	33-30881	22
Watertight		
Incandescent Subminiature Size T-1	95-33180	23
Neon Miniature Size T-2 w/internal 27k or 68k resistor	31-36681 31-36680	23
Incandescent Miniature Size T-1 3/4	11-35182	23
Incandescent Vaportight Size T-3 1/4	VM-700	24

OPTOLITE CONTINUED		
DESCRIPTION	TYPE	PAGE NUMBER
EMI Suppressed		
Incandescent Subminiature Size T-1	99-36980 99-36982	24
Neon Miniature Size T-2	38-36180	25
Neon Miniature Watertight Size T- 1 3/4	38-36680 38-36681	25
Incandescent Miniature Size T-1 3/4	18-36880	26
Incandescent Miniature Watertight Size T-1 3/4	18-36680	26
Press To Test		
Incandescent Miniature General Purpose Size T-1 3/4	03-91080	27
Incandescent Miniature Optional Press To Test Size T-1 3/4	59-52280	27
Incandescent Miniature Size T-1 3/4	01-91180	27
Incandescent Miniature Size T-1 3/4	03-90980	28
Incandescent Standard Size T-3 1/4	02-91180	28
Incandescent Miniature Watertight Size T-1 3/4	05-90880 05-90881	28
Incandescent Miniature Watertight Size T-1 3/4	05-91182	29
Incandescent Watertight Size T-3 1/4	06-91182	29
Incandescent Miniature EMI Suppressed Size T-1 3/4	08-83281	29
Incandescent Miniature EMI Suppressed Watertight Size T-1 3/4	08-83283	30
Incandescent General Purpose Size T-3 1/4	04-VM906	30
Incandescent Miniature General Purpose Size T-1 3/4	03-93480 03-93481	31
Push In		
Incandescent Subminiature General Purpose Size T-1	99-33080 99-33081	31
Cross Reference Tables		
Cross Reference		32
Lamp Selection Guide		33



Switch Characteristics

Contact rating:
5 amps resistive at 115 VDC ir28 VDC.
Nominal pushbutton travel:
.219 in
Nominal operating force:
24 oz.

Material and Finishes

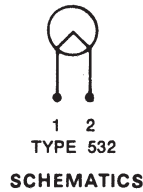
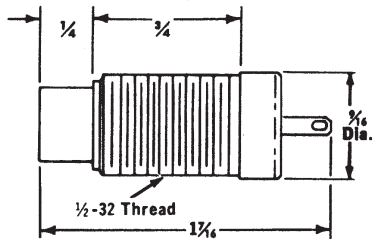
Pushbutton: high impact resistant plastic per L-P-349.
Pushbutton retention and knurled nut: aluminum, bright anodized.
Keywasher and mounting nut: brass, nickel plated.
Housing: aluminum, anodized.
Terminals and Contacts: coin silver
Terminal Board: molded thermo-set plastic

Lamp
T-1 1/4 incandescent or T-2 neon with midget flange base. See Lamp Selection Guide. Lamp may be replaced from front of panel by removing pushbutton retention nut. Switches will not operate with lamp removed.

Weight
Approximately .5 oz.

Styles
Where maximum indication of pushbutton illumination is of primary importance, the reflector style retention nut is recommended.

516 Type Alternate Action 5 Amp S.P.D.T. Form C



• Provides same pushbutton projection as Presslite switch bases in all styles of mounting hardware.

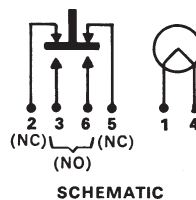
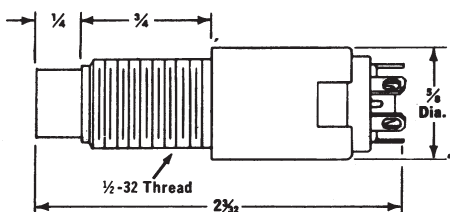
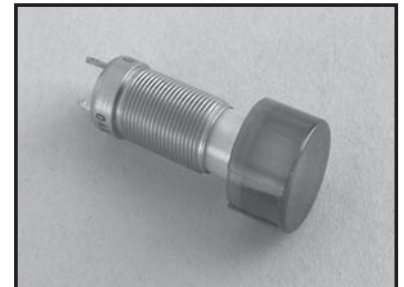
Material and Finishes

Pushbutton: high impact resistant plastic per L-P-349.
Pushbutton retention and knurled nut: aluminum, bright anodized.
Keywasher and mounting nut: brass, nickel plated.
Housing: aluminum, anodized.
Terminals and Contacts: coin silver
Terminal Board: molded thermo-set plastic

Lamp
T-1 1/4 incandescent or T-2 neon with midget flange base. See Lamp Selection Guide. Lamp may be replaced from front of panel by removing pushbutton retention nut. Switches will not operate with lamp removed.

Weight
Approximately .5 oz.

532 Type General Purpose Indicator Base



Momentary Action SPDT 3A @ 30VDC or 115VAC

• Contacts: Gold plated for low level switching

• Nominal operating force: 7 oz. to close normally open contacts

• Nominal pushbutton travel: 1/8" including 1/32" pre travel and 1/32" over travel

545 Type Momentary Action S.P.D.T. 3 Amp



518 Type Momentary Action S.P.D.T. 5 Amp



Switch Characteristics

Contact rating:
5 amps resistive at 115 VDC ir28 VDC.
Nominal pushbutton travel:
.219 in
Nominal operating force:
24 oz.

Material and Finishes

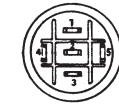
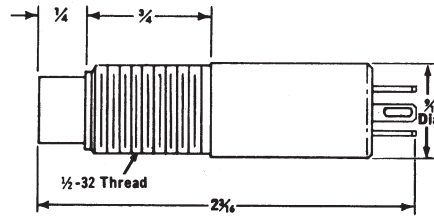
Pushbutton: high impact resistant plastic per L-P-349.
Pushbutton retention and knurled nut: aluminum, bright anodized.
Keywasher and mounting nut: brass, nickel plated.
Housing: aluminum, anodized.
Terminals and Contacts: coin silver
Terminal Board: molded thermoset plastic

Lamp

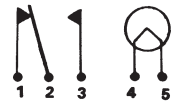
T-1 1/4 incandescent or T-2 neon with midjet flange base. See Lamp Selection Guide. Lamp may be replaced from front of panel by removing pushbutton retention nut. Switches will not operate with lamp removed.

Weight

Approximately .5 oz.
• Nominal operating force: 32 oz.
• Nominal pushbutton travel: .094 in.



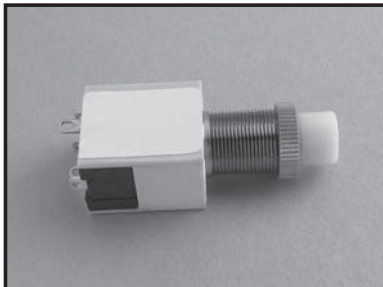
TERMINAL ASSIGNMENT



TYPES 516 & 518

SCHEMATICS

5720 Type Alternate Action 10.1 Amp D.P.D.T. Form C



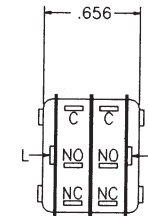
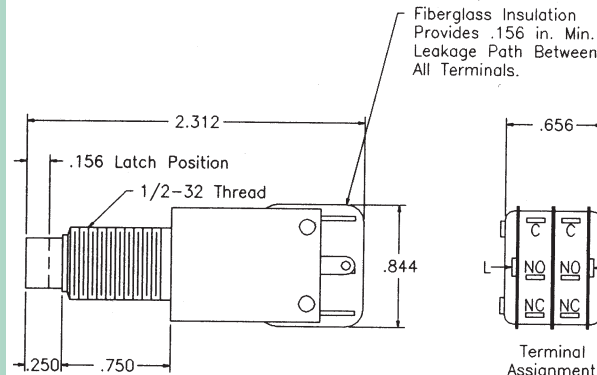
Switch Characteristics

• Double pole, double throw contact rating - 10.5 amp resistive @ 125/250 VAC or 28 VDC - 5 amp resistive @ 30 VDC

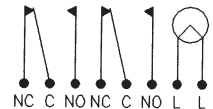
• Nominal operating force: 20 oz.

• Nominal pushbutton travel: .219 in.

• Latching action: Pushing plunger closes N.O. contacts and latches plunger. Pushing plunger again releases contacts and plunger return to "out" position. Plunger latch point is .156 in. from "out" position. Switch and latch interlocked to prevent teasing.



Terminal Assignment



Schematic

616 Type Low Profile Switch Snap Action 5 Amp



Switch Characteristics

Contact rating:
5 amps resistive at 115 VDC ir28 VDC.
Nominal pushbutton travel:
.219 in
Nominal operating force:
24 oz.

Material and Finishes

Pushbutton: high impact resistant plastic per L-P-349.
Pushbutton retention and knurled nut: aluminum, bright anodized.
Keywasher and mounting nut: brass, nickel plated.
Housing: aluminum, anodized.
Terminals and Contacts: coin silver
Terminal Board: molded thermoset plastic

Lamp

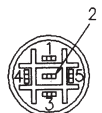
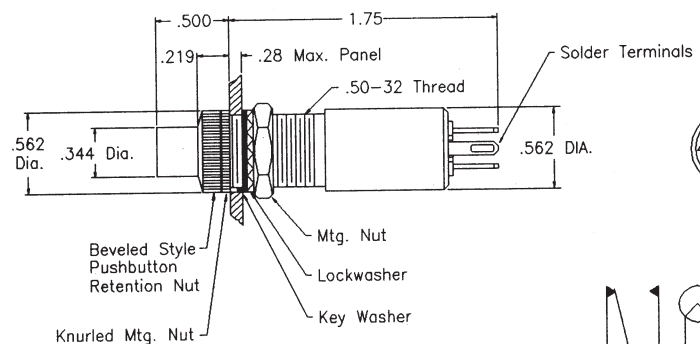
T-1 1/4 incandescent or T-2 neon with midjet flange base. See Lamp Selection Guide. Lamp may be replaced from front of panel by removing pushbutton retention nut. Switches will not operate with lamp removed.

Weight

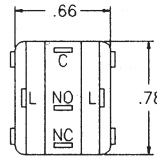
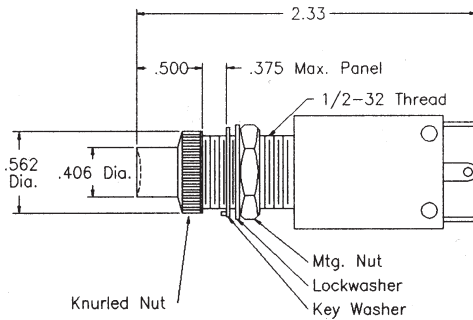
Approximately .5 oz.

Styles

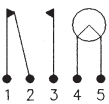
Where maximum indication of pushbutton illumination is of primary importance, the reflector style retention nut is recommended.



SCHEMATICS



Schematics



Switch "ON"



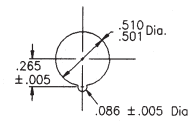
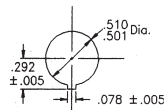
Switch "OFF"



Latch Position

Alternate action switches may be ordered with pushbuttons marked as shown to give positive indication of switch position.

Panel Cutouts



Switch Characteristics

Contact rating:
10.1 amps resistive at 125/250 VAC
or 14 VDC
5 amps resistive at 30 VDC.
Nominal pushbutton travel:
Alternate action switches, .219 in
Nominal operating force:
Single pole switches, 12 oz.
Double pole switches, 20 oz.

Material and Finishes

Pushbuttons: high impact resistant plastic per L-P-349.
Knurled nut: aluminum, bright anodized.
Keywasher and mounting nut: brass, nickel plated.
Lockwasher: stainless steel.
Housing: molded thermoplastic.
Contacts: coin silver

Lamp

T-1 3/4 incandescent with midget flange base or Al H neon. See Lamp Selection Guide. Lamp may be replaced from front of panel by removing pushbutton.

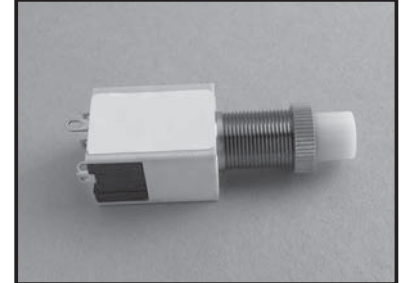
Weight

Approximately .6 oz.

Solder Terminals

Terminals accept AMP FASTON No. 60729-1 receptacles or equivalent.

6710/6720 Type Low Profile Switch 10.1 Amp Snap Action



Switch Characteristics

Contact ratings: .5 amp resistive at 30 VDC. .1 amp resistive at 115 VAC.
Nominal pushbutton travel: .1 in.
Nominal operating force: 4 oz.

Material and Finishes

Pushbuttons: high impact plastic per L-P-349.
Housing: black thermoplastic.
Mounting clip: stainless steel.
Lamp terminals: beryllium copper, tin plated.
Switch terminals and contacts: brass, gold plated.

Lamp

T-1 3/4 incandescent, with midget flange base. See Lamp Selection Guide. Lamp remains stationary when pushbutton is depressed.

Mounting

Assemblies press fit into .687 in. ± .005 in. dia. holes from front of panel. Mounting clips accommodate panels from .063 in. to .188 in.

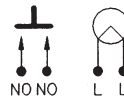
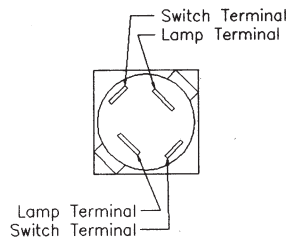
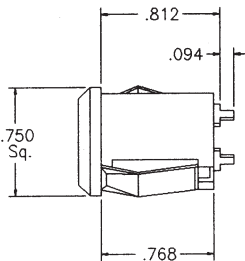
Weight

Approximately 25 oz.

Solder Terminals

Terminals accept AMP FASTON No. 60415-i receptacles or equivalent.

591 Type Snap in Switch Momentary Action 5 Amp



99-33180 Type Incandescent Subminiature Size T-1



Material and Finishes

Mounting tube, black glass filled nylon per MIL-M-19887. Mounting nut aluminum, black anodized per MIL-A-8625A. Lockwasher, stainless steel or steel, nickel plate. Brass terminals, tin plated per MIL-T-10727A.

Cap Assembly

Lens, high impact-resistant plastic per L-P-349.

Lamp

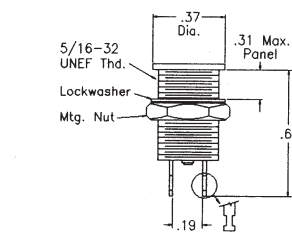
T-1 sub-midget flange base.

Mounting

Assembly mounts from front of panel. All mounting hardware supplied. Recommended mounting hole .328 in. \pm .015 in. \pm .000 in. dia.

Weight

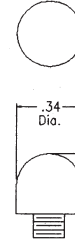
Approx. .12 oz. less lamp



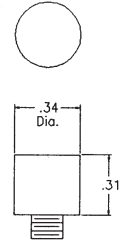
Schematic



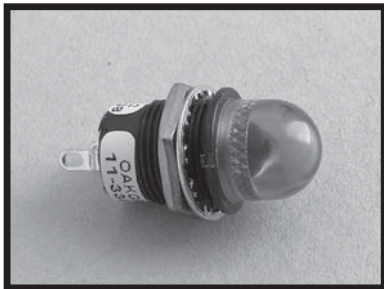
() P20 Cap



() P21 Cap



11-33480 Type Originally designed to meet MS 25256 Base LH 73/1 Incandescent Miniature Size T-1 3/4



Material and Finishes

Mounting tube and nuts, aluminum, black anodized per MIL-A-8625A. Lockwasher, stainless steel or steel, nickel plate. Brass terminals, tin plated per MIL-T-10727A.

Cap Assembly

Lens, high impact-resistant plastic per L-P-349.

Lamp

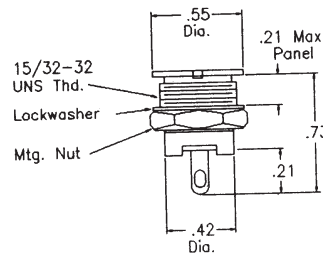
T-1 3/4 midget flange base.

Mounting

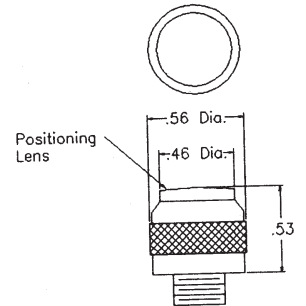
Assembly mounts from front of panel. All mounting hardware supplied.

Weight

Approximately .2 oz. less lamp.



Schematic



14-30080 Type Incandescent Miniature Size T-1 3/4



Materials and Finishes

Mounting tube and nuts, aluminum, black anodized per MIL-A-8625A. Lockwasher, stainless steel or steel, nickel plate. Brass terminals, tin plated per MIL-T-10727A.

Cap Assembly

Lens, high impact-resistant plastic per L-P-349. Lens holders, aluminum, black anodized.

Lamp

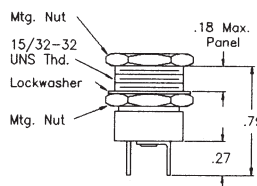
T-1 3/4 midget flange base.

Mounting

Assembly mounts from rear of panel. All mounting hardware supplied. Recommended mounting hole .500 in. \pm .015 in. dia.

Weight

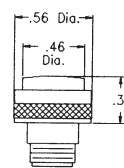
Approx. .27 oz. less lamp.



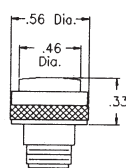
Schematic



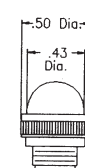
Sunlight Cap
91050M-()



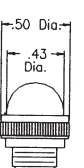
91050-5()



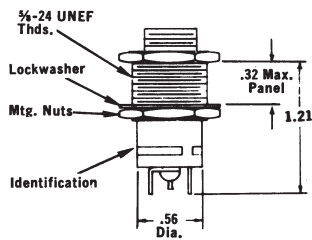
Sunlight Cap
10852M-()LB



10852-()L



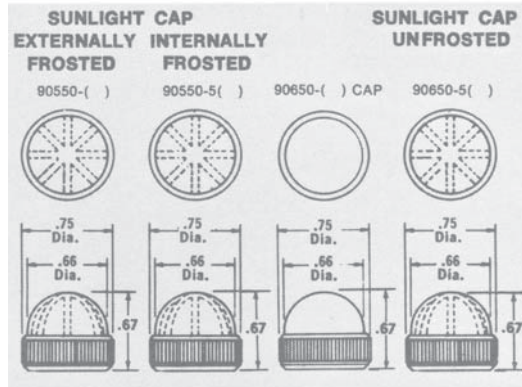
BASE ASSEMBLY
13-30080S



SCHEMATIC



CAP STYLES



Materials and Finishes

Mounting tube and nuts, aluminum, black anodized per MIL-A-8625A. Lockwasher, stainless steel or steel, nickel plate. Brass terminals, tin plated per MIL-T-10727A.

Cap Assembly

Lens, high impact-resistant plastic (nylon). Standard colors are semi-diffusing.

Lamp

T-3 3/4 miniature bayonet base.

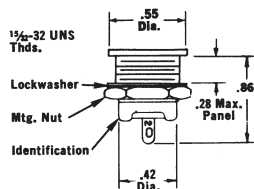
Mounting

Assembly mounts from rear of panel. All mounting hardware supplied. Recommended mounting hole .640 in. +/- .015 in. dia.

13-VM 305 Type
Incandescent General Purpose
Size T-3 3/4



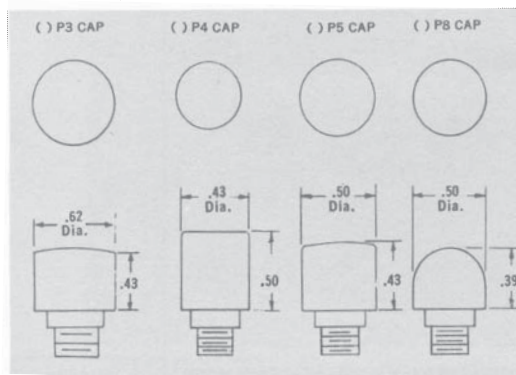
BASE ASSEMBLY
14-35180



SCHEMATIC



CAP STYLES



Materials and Finishes

Mounting tube and nuts, aluminum, black anodized per MIL-A-8625A. Lockwasher, stainless steel or steel, nickel plate. Brass terminals, tin plated per MIL-T-10727A.

Cap Assembly

Lens, high impact-resistant plastic per L-P-349.

Lamp

T-1 3/4 midget flange base.

Mounting

Assembly mounts from rear of panel. All mounting hardware supplied. Recommended mounting hole .500 in. +/- .015 in. dia.

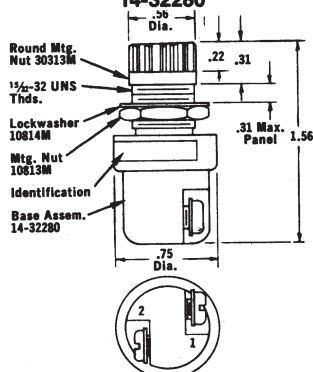
Weight

Approx. .2 oz. less lamp.

14-35180 Type
Incandescent Miniature
Size T-1 3/4



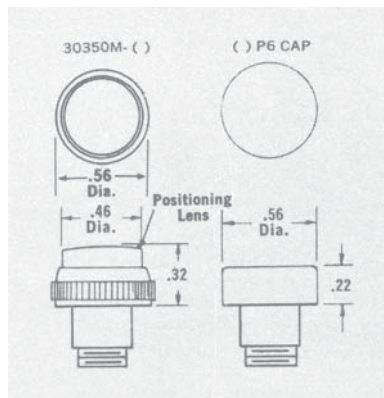
BASE ASSEMBLY
14-32280



SCHEMATIC



CAP STYLES



Materials and Finishes

Mounting tube and nuts, aluminum, black anodized per MIL-A-8625A. Lockwasher, stainless steel or steel, nickel plate. Terminals 6-32 screws, nickel plate. Round front mounting nut, bright nickel plate.

Lamp

T-1 3/4 midget flange base.

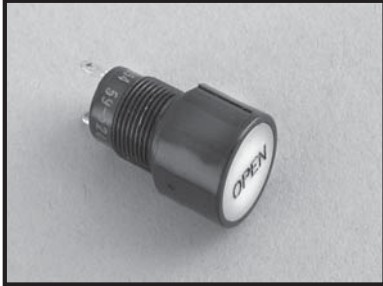
Mounting

Assembly mounts from rear of panel. All mounting hardware supplied. Recommended mounting hole .500 in. +/- .015 in. dia.

14-32280 Type
Incandescent Miniature
Size T-1 3/4



59-52480 Type Incandescent Miniature Size T-1 3/4



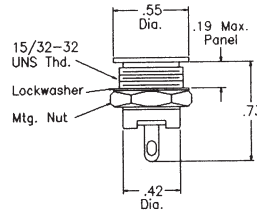
Materials and Finishes
Mounting tube and nuts, aluminum, black anodized per MIL-A-8625A. Lockwasher, stainless steel or steel, nickel plate. Brass terminals, tin plated per MIL-T-10727A.

Cap Assembly
Lens, high impact-resistant plastic per L-P-349.

Lamp
T-1 3/4 midget flange base.

Mounting
Assembly mounts from rear of panel. All mounting hardware supplied.

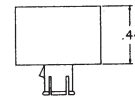
Weight
Approx. .2 oz. less lamp.



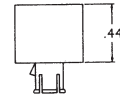
SCHEMATIC



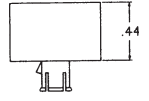
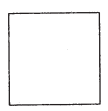
Circular



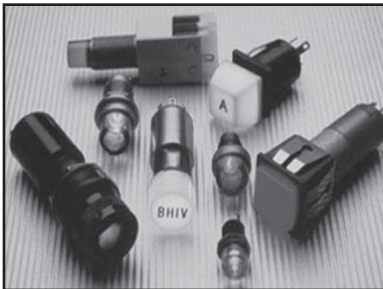
Rectangular



Square



33-30881 Type Neon Miniature Size T-2



Materials and Finishes
Mounting tube gold anodized, rear mtg. nut aluminum, black anodized per MIL-A-8625A. Lockwasher, stainless steel or steel, nickel plate. Terminals, brass, tin plated per MIL-T-10727A. Round front mtg. nut, bright nickel plate.

Cap Assembly
Lens, high impact-resistant plastic per L-P-349. Standard colors are transparent.

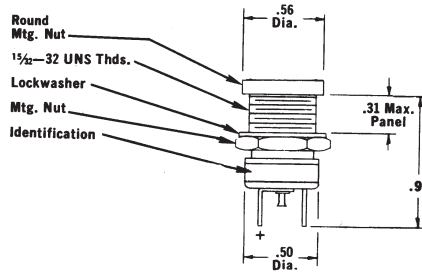
Lamp
A1G (std.) or A1H (high brightness) T-2 neon is furnished with each assembly.

Mounting
Assembly mounts from rear of panel. All mounting hardware supplied. Recommended mounting hole .500 in. +/- .015 in. dia.

Weight
Approx. .35 oz. less lamp.

BASE ASSEMBLY

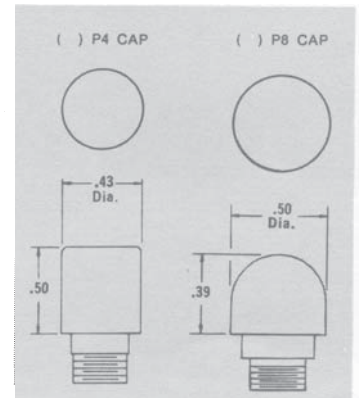
33-30881 (68KΩ Internal Resistor)

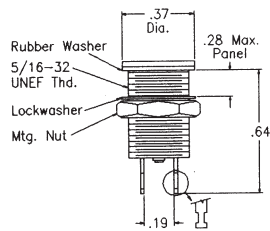


SCHEMATIC



CAP STYLES

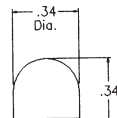




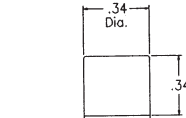
Schematic



2 () P20 Cap



2 () P21 Cap



Materials and Finishes

Mounting tube, black glass filled nylon per MIL-M-19887. Mounting nut, aluminum, black anodized per MIL-A-8625A. Lockwasher, stainless steel or steel, nickel plate. Brass terminals, tin plated per MIL-T-10727A.

Cap Assembly

Lens, high impact-resistant plastic per L-P-349. Standard colors are transparent.

Lamp

T-1 sub-midget flange base.

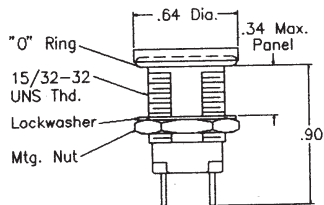
Mounting

Assembly mounts from front of panel. All mounting hardware supplied.

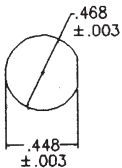
Weight

Approx. .12 oz. less lamp.

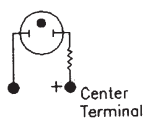
**95-33180 Type
Incandescent Subminiature
Size T-1**



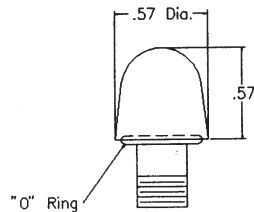
**Panel
Cutout**



Schematic



() P25 Cap
LC33



Materials and Finishes

Mounting tube and nuts, aluminum, black anodized per MIL-A-8625A. Lockwasher, stainless steel or steel, nickel plate. Brass terminals, tin plated per MIL-T-10727A. "O" ring, silicone rubber.

Cap Assembly

Lens, high impact-resistant plastic per L-P-349. Standard colors are transparent.

Lamp

C7A (std.) or C9A (high brightness) T2 neon lamp is furnished with each assembly.

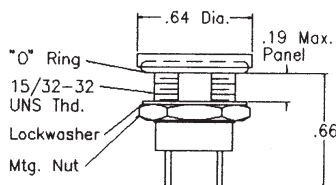
Mounting

Assembly mounts from front of panel. All mounting hardware supplied.

Weight

Approx. .3 oz. less lamp.

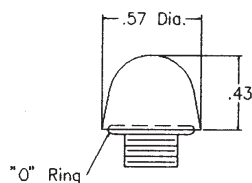
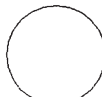
**31-36681 Type
w/68k Internal Resistor
31-36680 Type
w/27k Internal Resistor
Neon Miniature, T-2**



Schematic



() P24 Cap
LC35



Materials and Finishes

Mounting tube, aluminum, black anodized per MIL-A-8625A. Mounting nut, steel cad plate per QQ-P-416. Lockwasher, stainless steel or steel, nickel plate. Brass terminals, tin plated per MIL-T-10727A. "O" ring, silicone rubber.

Cap Assembly

Lens, high impact-resistant plastic per L-P-349.

Lamp

T-1 3/4 midget flange base.

Mounting

Assembly mounts from front of panel. All mounting hardware supplied.

Weight

Approx. .3 oz. less lamp.

**11-35182 Type
Incandescent Miniature
Size T-1 3/4**



VM-700 Type Incandescent Vaportight Size T-3 1/4

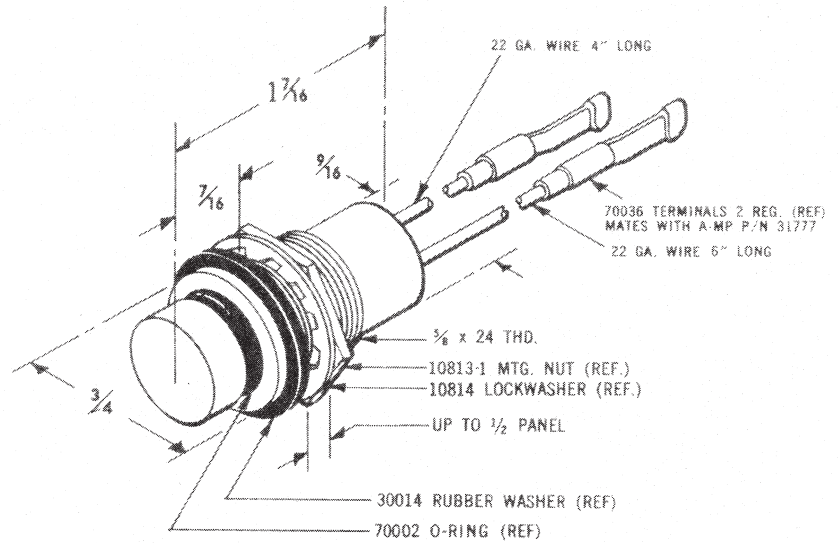


Cap
Transparent plastic with O-ring. If translucent cap is desired, add "TL" to final dash number

Base Assembly
Aluminum - standard finish is bright anodize

Light Assembly
Completely sealed and will withstand immersion in liquid

Weight
Approx. 1 oz., less lamp



99-36980 Type 99-36982 Type Incandescent Subminiature Size T-1



Material and Finishes
Mounting tube and nut, stainless steel, passivated per MIL-S-5002. Wire leads #26 GA silver coated, stranded copper with TFE-fluorocarbon insulation.

Lens Assembly
Lens, high impact-resistant plastic per L-P-393 (polycarbonate).

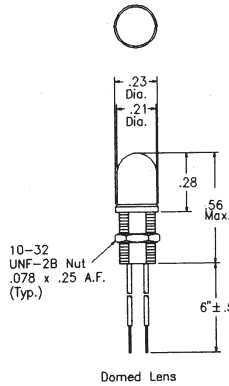
Lamp
MS24367-683 subminiature T-1 with 5.0V at .060 amp rating (non-replaceable).

Mounting
Assembly mounts from front of panel. All mounting hardware supplied. E.M.I. suppressed assemblies require paint free area on back side of mounting for E.M.I. conductivity.

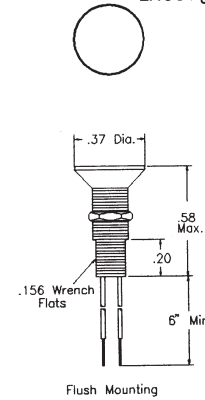
Weight
Approx. .005 lbs. max.

EMI Suppressed

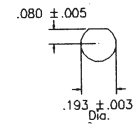
98-36980
99-36980
LHC82 \$



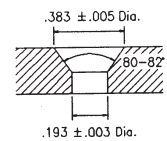
98-36982
99-36982
LHC84 \$



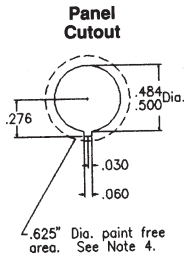
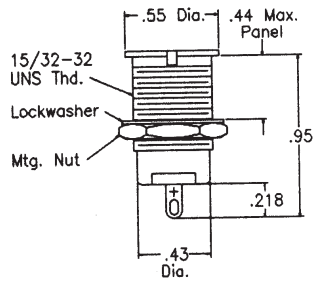
Panel Cutouts



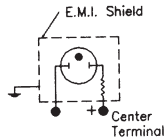
Domed Lens Flat Lens



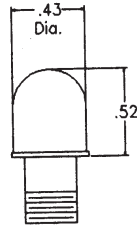
Flush Mounting



Schematic



()P41
LC28



Material and Finishes

Mounting tube and nuts, brass plated, nickel plated per QQ-N-290. Lockwasher, stainless steel or steel, nickel plate. Brass terminals, tin plated per MIL-T-10727A.

Cap Assembly

Lens, high impact-resistant plastic per L-P-349. Standard colors are transparent.

Lamp

C7A (std.) or C9A (high brightness) T2 neon lamp is furnished with each assembly.

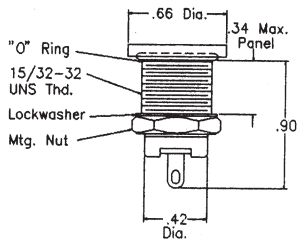
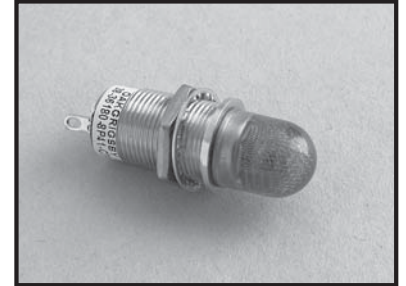
Mounting

Assembly mounts from front of panel. All mounting hardware supplied. Recommended mounting hole .500 in. +/- .015 in. dia. Paint free area around backside hole required for E.M.I. conductivity.

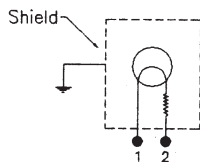
Weight

Approx. .3 oz. less lamp.

**38-36180 Type
Neon Miniature
Size T-2**



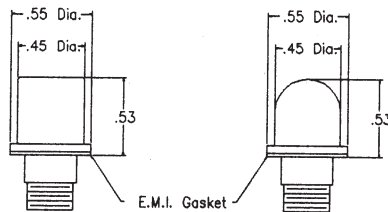
Schematic



()P45



()P50



Material and Finishes

Mounting tube and nut, brass, bright nickel finish. Lockwasher stainless steel or steel nickel plate. Brass terminals, tin plated per MIL-T-10727A. "O" ring, silicone rubber.

Cap Assembly

Lens, high impact-resistant plastic per L-P-349 Lens holders, brass, bright nickel plated.

Lamp

T-1 3/4 midget flange base.

Mounting

Assembly mounts from front of panel. All mounting hardware supplied. Recommended mounting hole .500 in. +/- .015 in. dia. Paint free area around back side of hole required for E.M.I. conductivity.

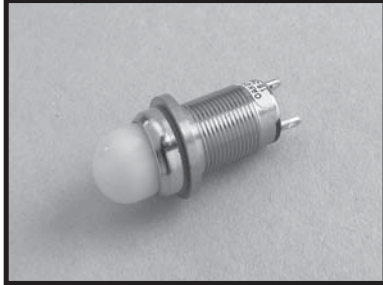
Weight

Approximately .35 oz. less lamp.

**38-36680 Type
w/68K Internal Resistor
38-36681 Type
w/27K Internal Resistor
Neon Miniature Watertight
Size T-1 3/4**



18-36880 Type Base was designed to LH 73/2 Neon Miniature Size T-1 ¾



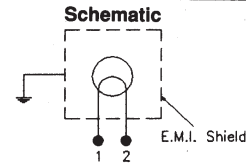
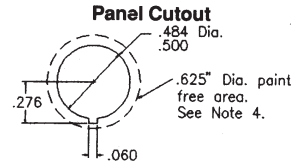
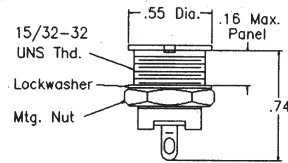
Material and Finishes
Mounting tube and nut, brass, bright nickel finish. Lockwasher stainless steel or steel nickel plate. Brass terminals, tin plated per MIL-T-10727A. "O" ring, silicone rubber.

Cap Assembly
Lens, high impact-resistant plastic per L-P-349 Lens holders, brass, bright nickel plated.

Lamp
T-1 ¾ midget flange base.

Mounting
Assembly mounts from front of panel. All mounting hardware supplied. Recommended mounting hole .500 in. \pm .015 in. dia. Paint free area around back side of hole required for E.M.I. conductivity.

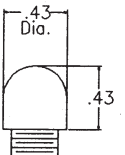
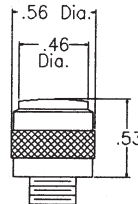
Weight
Approximately .35 oz. less lamp.



()P38
LC25



()P40
LC27



18-36680 Type Incandescent Miniature Watertight - Size T-1 ¾



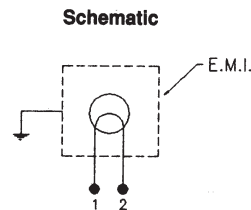
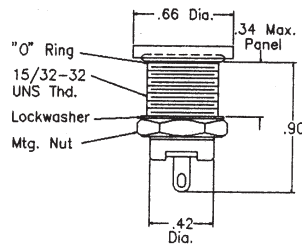
Material and Finishes
Mounting tube and exposed hardware, brass, bright nickel plate per QQ-N-290. Lockwasher, stainless steel or steel, nickel plate. Terminals, brass, tin plated per MIL-T-10727A.

Cap Assembly
Lens is high impact-resistant plastic per L-P-349.

Lamp
T-1 ¾ midget flange base.

Mounting
Assembly mounts from front of panel. All mounting hardware supplied. E.M.I. suppressed assemblies require paint free area on back side of mounting hole for E.M.I. conductivity.

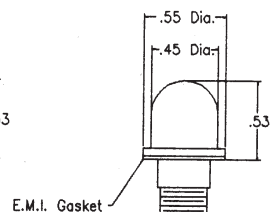
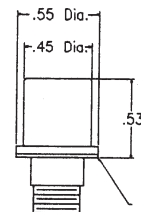
Weight
Approx. .35 oz less lamp.

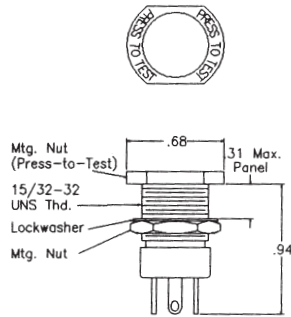


()P45

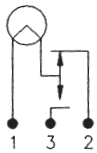


()P50

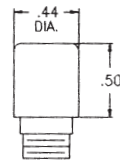




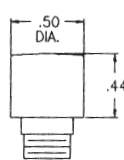
Schematic



() P4 Cap



() P5 Cap



Material and Finishes

Mounting tube and nuts, aluminum, black anodized per MIL-A-8625A. Lockwasher, stainless steel. Brass terminals, tin plated per MIL-T-10727A.

Cap Assembly

Lens, high impact-resistant plastic per L-P-349.

Lamp

T-1 ¾ midget flange base. See Lamp Selection Guide.

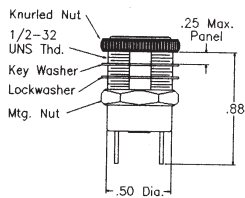
Mounting

Assembly mounts from rear of panel. All mounting hardware supplied. Recommended mounting hole .500 in. ±.015 in. dia.

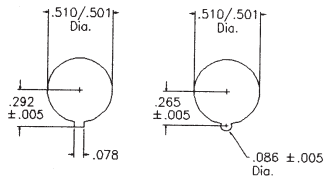
Weight

Approximately .4 oz. less lamp.

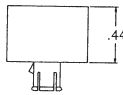
**03-91080 Type
Incandescent Miniature
General Purpose
Size T-1 ¾**



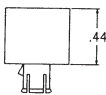
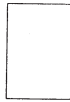
Panel Cutouts



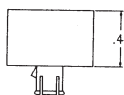
Circular



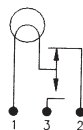
Rectangular



Square



Schematic



Material and Finishes

Mounting tube and knurled nut, clear anodized per MIL-A-8625A.

Mounting nut and key washer, brass, nickel plate. Lockwasher, stainless steel or steel, nickel plate. Brass terminals, tin plated per MIL-T-10727A.

Cap Assembly

Lens, high impact-resistant plastic per L-P-349. Friction fit lens caps, rotatable or keyed. Uses Presslite friction cap pushbuttons.

Lamp

T-1 ¾ midget flange base.

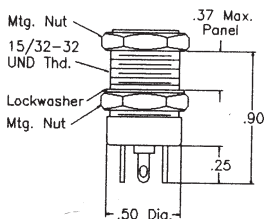
Mounting

Assembly mounts from rear of panel. All mounting hardware supplied. Recommended mounting hole, see drawing.

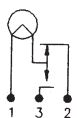
Weight

Approximately .5 oz. less lamp.

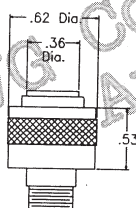
**59-52280 Type
Incandescent Miniature
Optional Press to Test
Size T-1 ¾**



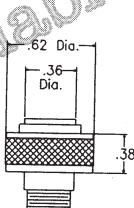
Schematic



Dimmer Cap
10850M-()



Non-Dim Cap
10850M-()



Material and Finishes

Mounting tube and nuts, aluminum, black anodized per MTL-A-8625A. Lockwasher, stainless steel. Brass terminals, tin plated per MIL-T-10727A.

Cap Assembly

Lens, high impact-resistant plastic per L-P-349, NVG Green, flat glass lens. Lens holders, aluminum, black anodized.

Lamp

T-1 ¾ midget flange base.

Mounting

Assembly mounts from rear of panel. All mounting hardware supplied. Recommended mounting hole .500 in. ±.015 in. dia.

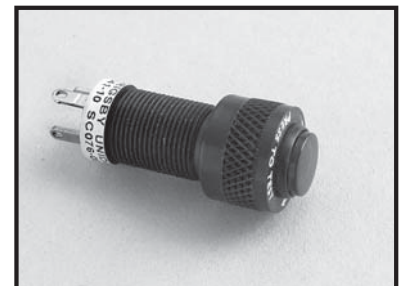
Identification

Identified with MS P/N and base assembly number.

Weight

Approximately .5 oz. less lamp.

**01-91180 Type
Originally designed
to meet MS 25041
Incandescent Miniature
Size T-1 ¾**



03-90980 Type Incandescent Miniature Size T-1 3/4



Material and Finishes

Mounting tube, black glass filled nylon per MIL-M-19887. Mounting nut aluminum, black anodized per MIL-A-8625A. Lockwasher, stainless steel or steel, nickel plate. Brass terminals, tin plated per MIL-T-10727A.

Cap Assembly

Lens, high impact-resistant plastic per L-P-349. Lens holders are aluminum, black anodized.

Lamp

T-1 3/4 midget flange base.

Mounting

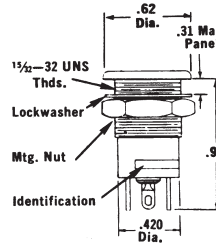
Assembly mounts from front of panel. All mounting hardware supplied. Recommended mounting hole .500 in. +/- .015 in. dia.

Weight

Approx. .9 oz. less lamp.

BASE ASSEMBLY

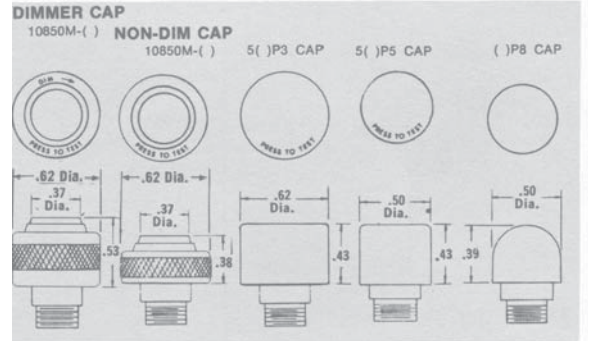
03-90980



SCHEMATIC



CAP STYLES



02-91180 Type Originally designed to meet MS 25331 Incandescent Standard Size T-3 1/4



Material and Finishes

Mounting tube and nuts, aluminum, black anodized per MIL-A-8625A. Lockwasher, stainless steel. Brass terminals, tin plated per MIL-T-10727A.

Cap Assembly

Lens is high impact-resistant plastic per L-P-349. Lens holders, aluminum, black anodized.

Lamp

T-3 1/4 miniature bayonet base.

Mounting

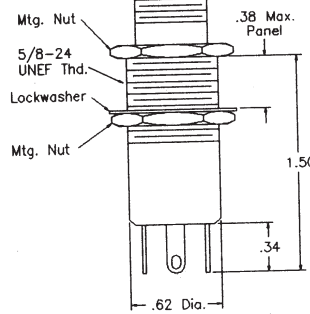
Assembly mounts from rear of panel. All mounting hardware supplied. Recommended mounting hole .640 in. +/- .015 in. dia.

Identification

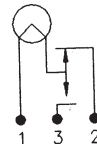
Identified with MS P/N and base assembly number

Weight

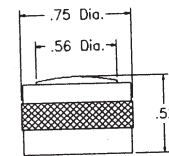
Approximately .8 oz. less lamp.



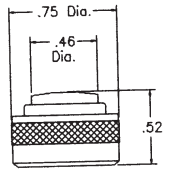
Schematic



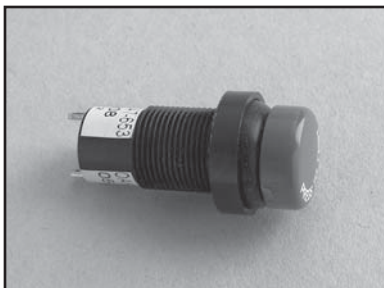
Dimmer Cap
10850-()



Non-Dim Cap
10850-()



05-90880 Type 05-90881 Type Incandescent Miniature Watertight - Size T-1 3/4



Material and Finishes

Mounting tube, black glass filled nylon per MIL-M-19887. Mounting nut aluminum, black anodized per MIL-A-8625A. Lockwasher, stainless steel or steel, nickel plate. Brass terminals, tin plated per MIL-T-10727A. Rubber boot and washer, silicone rubber.

Cap Assembly

Lens, high impact-resistant plastic per L-P-349. Lens holders are aluminum, black anodized.

Lamp

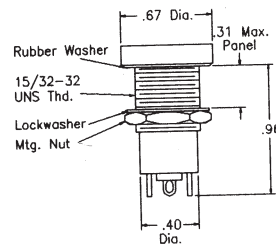
T-1 3/4 midget flange base.

Mounting

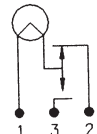
Assembly mounts from front of panel. All mounting hardware supplied. Recommended mounting hole .500 in. +/- .015 in. dia.

Weight

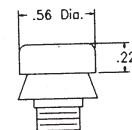
Approx. .3 oz. less lamp.



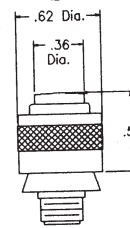
Schematic



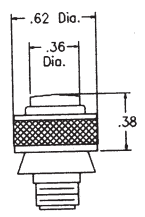
5()WT7

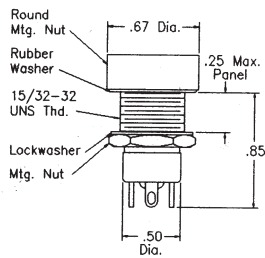


Dimmer Cap
90852-()

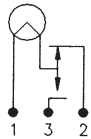


Non-Dim Cap
90852-()

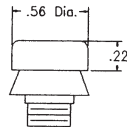




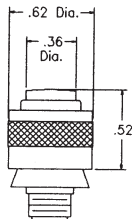
Schematic



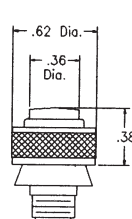
5 () W17



Dimmer Cap
90852- ()



Non-Dim. Cap
90852- ()



Material and Finishes

Mounting tube and nuts, aluminum, black anodized per MIL-A-8625A. Lockwasher, stainless steel or steel, nickel plate. Brass terminals, tin plated per MIL-T-10727A. Rubber boot and washer, silicone rubber.

Cap Assembly

Lens, high impact-resistant plastic per L-P-349. Lens holders are aluminum, black anodized.

Lamp

T-1 3/4 midget flange base.

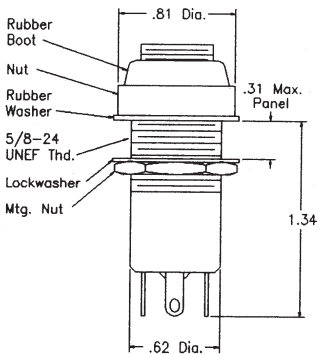
Mounting

Assembly mounts from rear of panel. All mounting hardware supplied. Recommended mounting hole .500 in. \pm .015 in. dia.

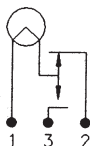
Weight

Approximately .44 oz. less lamp.

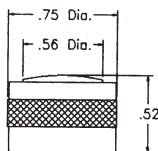
**05-91182 Type
Incandescent Miniature
Watertight - Size T-1 3/4**



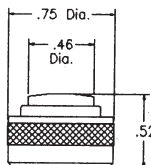
Schematic



Dimmer Cap
10854- ()



Non-Dim. Cap
10854- ()



Material and Finishes

Mounting tube and nuts, aluminum, black anodized per MIL-A-8625A. Lockwasher, stainless steel or steel, nickel plate. Brass terminals, tin plated per MIL-T-10727A. Rubber boot and washer, silicone rubber.

Cap Assembly

Lens, high impact-resistant plastic per L-P-349. Lens holders, aluminum, black anodized.

Lamp

T-3 1/4 miniature bayonet base.

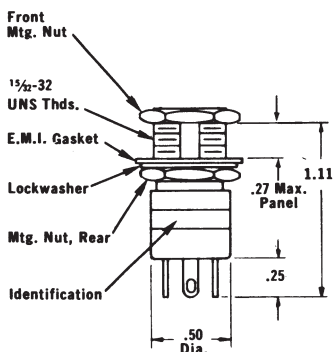
Mounting

Assembly mounts from rear of panel. All mounting hardware supplied. Recommended mounting hole .640 in. \pm .015 in. dia.

Weight

Approximately .85 oz. less lamp.

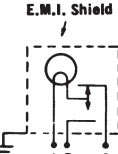
**06-91182 Type
Incandescent Watertight
Size T-3 1/4**



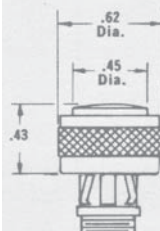
PANEL CUTOUT



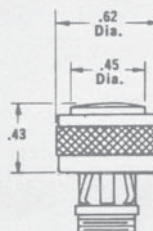
SCHEMATIC



DIMMER CAP
83250-8 ()



NON-DIM CAP
83250-8 ()



Material and Finishes

Lens holder and front mounting nut is black anodized per MIL-A-8625A. Mounting tube & rear Mtg. nut, is bright nickel plated per QQ-N-200. Lockwasher is stainless steel. Terminals brass, gold plated per MIL-G-45204.

Cap Assembly

Lens is high impact-resistant plastic per L-P-349. Lens holders are aluminum, black anodized.

Lamp

T-1 3/4 midget flange base.

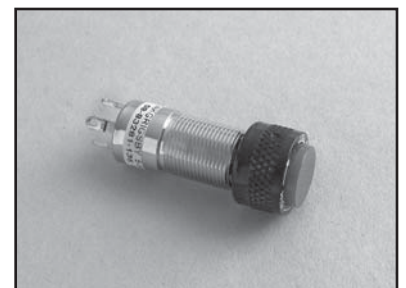
Mounting

Assembly mounts from rear of panel. All mounting hardware supplied. Flat on Mtg. tube provides for keyed installation.

Weight

Approx. .5 oz less lamp.

**08-83281 Type
Incandescent Miniature
EMI Suppressed
Size T-1 3/4**



08-83283 Type Incandescent Miniature EMI Suppressed Watertight Size T-1 3/4



Material and Finishes

Round mounting nut, aluminum, black anodized per MIL-A-8625A. Mounting tube and mounting nut, bright nickel plated per QQ-N-290. Lockwasher, steel, nickel plated. Rubber boot and washer, silicone rubber. Brass terminals, gold plated per MIL-G-45204.

Cap Assembly

Lens, high impact-resistant plastic per L-P-349. Lens holders, aluminum, black anodized.

Lamp

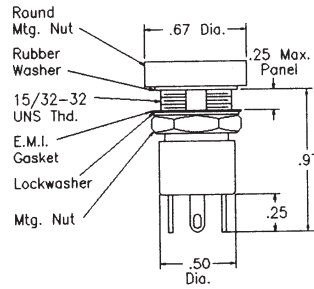
T-1 3/4 midjet flange base.

Mounting

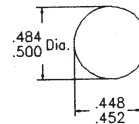
Assembly mounts from rear of panel. All mounting hardware supplied. Flat on mounting tube provides for keyed installation.

Weight

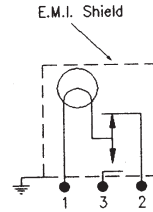
Approximately .6 oz. less lamp.



Panel Cutout



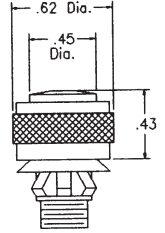
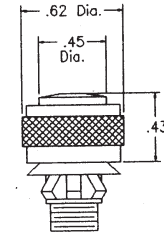
Schematics



Dimmer Cap
83250-8()WT



Non-Dim Cap
83250-8()WT



04-VM906 Type Incandescent General Purpose Size T-3 1/4



Material and Finishes

Mounting tube, aluminum, black anodized per MIL-A-8625A. Mounting nut, steel cad plate per QQ-C-416. Lockwasher, stainless steel or steel, nickel plate. Brass terminals, tin plated per MIL-T-10727A.

Cap Assembly

Lens, high impact-resistant plastic per L-P-349. Standard colors are semi-diffusing.

Lamp

T-3 1/4 miniature bayonet base.

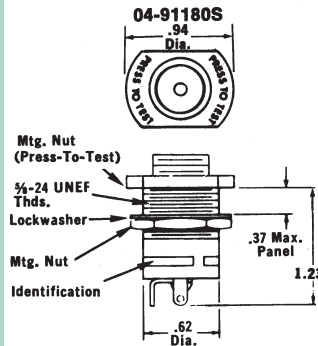
Mounting

Assembly mounts from front of panel. All mounting hardware supplied. Recommended mounting hole .640 in. +/- .015 in. dia.

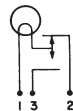
Weight

Approx. .55 oz. less lamp.

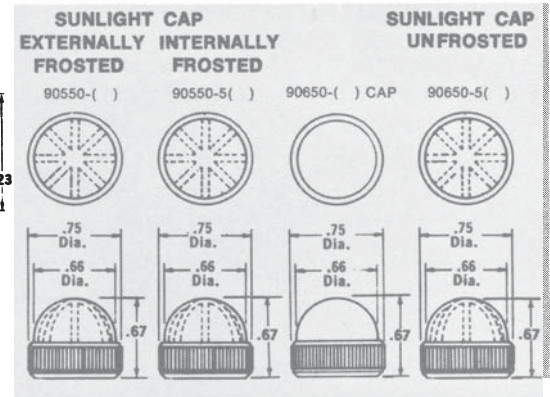
BASE ASSEMBLY



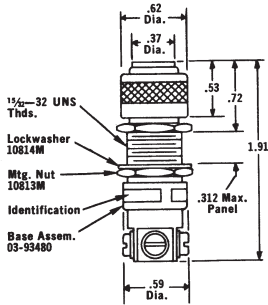
SCHEMATIC



CAP STYLES



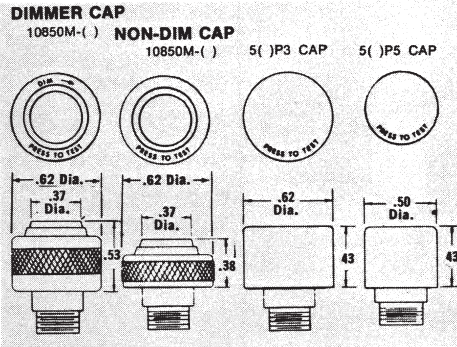
BASE ASSEMBLY
03-93480



SCHEMATICS



CAP STYLES



Materials and Fiber

Mounting tube and nuts are aluminum, black anodized per MIL-A-8625A. Lockwasher, stainless steel or steel, nickel plated. Terminals are 4-40 screws, nickel plate QQ-N-290.

Cap Assembly

Lens is high impact-resistant plastic per L-P-349a.

Lamp

T-1 3/4 midget flange base. Standard colors are transparent. Also available in translucent or diffusing caps.

Mounting

Assembly mounts from rear of panel. All mounting hardware supplied. Recommended mounting hole .500 ± .015 diameter.

Weight

Approximately .50 oz. less lamp.

03-93480 Type

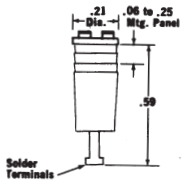
03-93481 Type

Incandescent Miniature
General Purpose - Size T-1 3/4

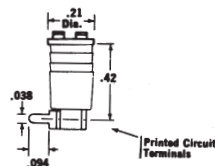


Push In

Base Assembly
99-33080

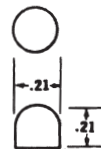


Base Assembly
99-33081

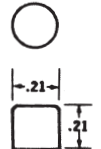


Cap Styles

() P46 CAP



() P47 CAP



Material and Finishes

Housing and lamp base, gray glass filled nylon. Terminals, beryllium copper, gold flashed. Retainer clip, stainless steel.

Lens Cap

High impact-resistant plastic per L-P-393 (polycarbonate).

Lamp

T-1 wire terminal lamp; Lamp is replaced by removing snap-on cap.

Mounting

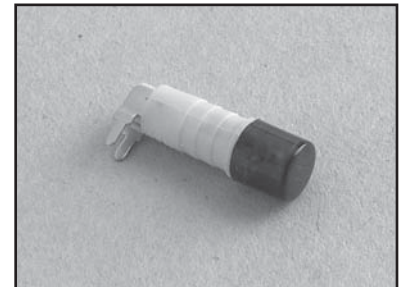
Press-in: Assembly press fits into .189 in. dia. hole. No mounting hardware required.

Retainer clip: For mounting assembly into .200 in. ± .005 in. dia. hole or panels less than .06 in. thick. Order clip 2-1186-643 separately.

99-33080 Type

99-33081 Type







Incandescent Subminiature
General Purpose - Size T-1



Cross Reference to Military Type Designations		
Specification	Type Designation	Electroswitch Part Number
MIL-L-3661/5	LH 73/1	11-33480
	LH 73/2	18-36880
	LH 74/1	31-36180
MIL-3661/6	LH 74/2	31-36280
	LH 74/3	38-36180
	LH 74/4	38-36280
	LC 11 RN2	6P35
	LC 11 GN2	7P35
MIL-L-3661/11	LC 11 YN2	8P35
	LC 11 CN2	5P35
	LC 11 RT2	6P35TL
	LC 11 GT2	7P35TL
	LC 11 YT2	12P35TL
	LC 11 WT2	5P35TL
	LC 11 GD2	7P35IF
	LC 11 RD2	6P35IF
	LC 11 RB2	46P35
	LC 11 GB2	47P35
	LC 11 YB2	412P35
	LC 11 WB2	45P35
MIL-L-3661/13	LC 13 RN2	6P13
	LC 13 YN2	8P13
	LC 13 WT2	17P13
	LC 13 CN2	5P13
	LC 13 GT2	7P13TL
MIL-L-3661/25	LC 25 RN2	6P38
	LC 25 GN2	7P38
	LC 25 YN2	8P38
	LC 25 CN2	5P38
	LC 25 RT2	6P38TL
	LC 25 GT2	7P38TL
	LC 25 YT2	12P38TL
	LC 25 WT2	5P38TL
MIL-L-3661/27	LC 27 RN2	6P40
	LC 27 YN2	8P40
	LC 27 CN2	5P40
	LC 27 RT2	6P40TL
	LC 27 GT2	7P40TL
	LC 27 YT2	12P40TL
	LC 27 WT2	5P40TL
MIL-L-3661/28	LC 27 GN2	7P40
	LC 28 RN2	6P41
	LC 28 YN2	8P41
	LC 28 WT2	17P41
MIL-L-3661/33	LC 28 CN2	5P41
	LC 33 RN2	6P25
	LC 33 YN2	8P25
	LC 33 WT2	17P25
MIL-3661/34	LC 33 CN2	5P25
	LC 34 EN 2/DO2	80250-11
	LC 34 CN 2/DO2	80250-12
	LC 34 EN 2/EN2	80250-13
	LC 34 CN 2/EN2	80250-14
	LC 34 EN 2/SO2	80250-15
MIL-L-3661/34	LC 11 CN 2/SO2	80250-16
	LC 35 RN2	6P24
	LC 35 GN2	7P24
	LC 35 YN2	8P24
	LC 35 CN2	5P24
	LC 35 GT2	7P24TL
	LC 35 YT2	12P24TL
	LC 35 RT2	6P24TL
	LC 35 WT2	5P24TL
	LHC 82/1 WT2	99-36980-5TL
MIL-L-3661/40	LHC 82/1 RT2	99-36980-6TL
	LHC 82/1 GT2	99-36980-7TL
	LHC 82/1 YT2	99-36980-12TL
	LHC 82/2 YT2	99-36980-12TL
	LHC 82/2 WT2	99-36980-5TL
	LHC 82/2 RT2	99-36980-6TL
	LHC 82/2 GT2	99-36980-7TL
	LH 88/1	31-36680
MIL-L-3661/46	LH 88/2	31-36681
MIL-L-3661/47	LH 89/1	11-35182
MIL-L-3661/51	LH 92/1	91-80280

Cross Reference "MS" Numbers	
Military Standard	Electroswitch Part Number
MS 25041-1	01-91180-1
MS 25041-2	01-91180-2
MS 25041-3	01-91180-3
MS 25041-4	01-91180-4
MS 25041-5	01-91180-5
MS 25041-6	01-91180-6
MS 25041-7	01-91180-7
MS 25041-8	01-91180-8
MS 25041-10	01-91180-10
MS 25041-11	01-91180-11
MS 25256-2	11-33480-8P12
MS 25256-4	11-33480-7P12
MS 25256-6	11-33480-6P12
MS 25256-8	11-33480-5P12
MS 25256-10	11-33480-5P12TL
MS 25256-12	11-33480-11P12
MS 25331-1	02-91180-1
MS 25331-2	02-91180-2
MS 25331-3	02-91180-3
MS 25331-4	02-91180-4
MS 25331-5	02-91180-5
MS 25331-6	02-91180-6
MS 25331-7	02-91180-7
MS 25331-8	02-91180-8
MS 25331-9	02-91180-9

Lamp selection guide

INCANDESCENT TYPE							
<div>Size T-1</div> <div>Sub-midget</div> <div>Flange Base</div> <div></div>	LAMP NO.	RATED VOLTAGE	AMPERAGE	APPROX. CANDLEPOWER	AVERAGE LIFE (Hrs.)	NOTES	
	682	5.0	.060	.03	100,000	MS24515-682	
	685	5.0	.060	.05	100,000	MS24515-685	
	718	5.0	.115	.15	40,000	MS24515-718	
	6839	28.0	.024	.13	16,000	MS3338-6839	
Group M							
<div>Size T-1 3/4</div> <div>Midget</div> <div>Flange Base</div> <div></div>	331	1.35	.06	.01	500		
	268	2.5	.35	.21	10,000		
	338	2.7	.06	.04	6,000	MS25237-338	
	345	6.0	.04	.03	10,000		
	328	6.0	.20	.34 @ 5 V	1,000	MS25237-328	
	380	6.3	.04	.02	50,000		
	350	6.3	.15	.45	3,000		
	349	6.3	.20	.55	3,000		
	381	6.3	.20	.40	50,000		
	344	10.0	.014	.004	10,000		
	367X	10.0	.04	.08	5,000		
	330	14.0	.08	.50	750	MS25237-330	
	370	18.0	.04	.15	1,000		
	327	28.0	.04	.34	1,000	MS25237-327	
	387	28.0	.04	.30	25,000	MS25237-387	
	<div>Size T-3 1/4</div> <div>Miniature</div> <div>Bayonet Base</div> <div>Single Contact</div> <div></div>	316	6.0	.70	3.4	500	MS25231-316
		44	6.3	.25	.9	3,000	
		47	6.3	.15	.52	3,000	
1816		13.0	.33	3.0	1,000		
1815		14.0	.20	1.4	3,000		
313		28.0	.17	3.0	500	MS25231-313	
1819		28.0	.04	.34	1,000	MS25231-1819	
1829		28.0	.075	1.0	1,000	MS25231-1829	
1835		55.0	.05	1.1	10,000		
Group B							
NEON GLOW TYPE							
<div>Size T-2</div> <div></div>	LAMP NO.	RATED VOLTAGE	STARTING VOLTAGE	RECOMMENDED SERIES RESISTOR	NOTES		
	A1G	105-125 AC OR DC	65 VAC 95 VDC	68K Ω			
	A1H (High Brightness)	105-120 VAC 150 VDC	95 VAC	27K Ω			
<div>Group C</div> <div>Size T-2</div> <div></div> <div>Group D</div>	C7A	105-125 AC OR DC	65 VAC 90 VDC	68K Ω	MS25252-C7A		
	C9A (High Brightness)	105-125 AC OR DC	105 VAC	27K Ω	MS25252-C9A		
LAMPS WITH BUILT-IN RESISTOR							
<div>Size T-2</div> <div></div>	LAMP NO.	RATED VOLTAGE	STARTING VOLTAGE	NOTES			
	A1HR1	105-125 VAC	65 VAC 95 VDC				
	A1GR1	105-125 VAC	95 VAC				
	A1GR2	105-125 VAC	130 VAC				

Notes:

1. Candlepower values indicated are approximate initial mean spherical candlepower at rated voltage.
2. Service conditions such as voltage surges, temperature, shock, and vibration may contribute to a shorter average life.