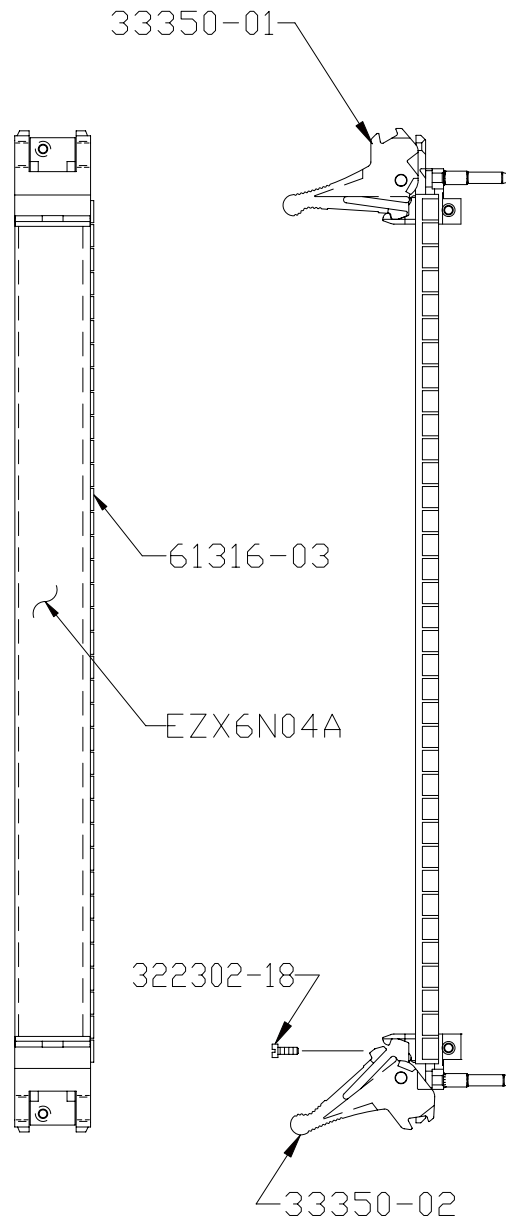
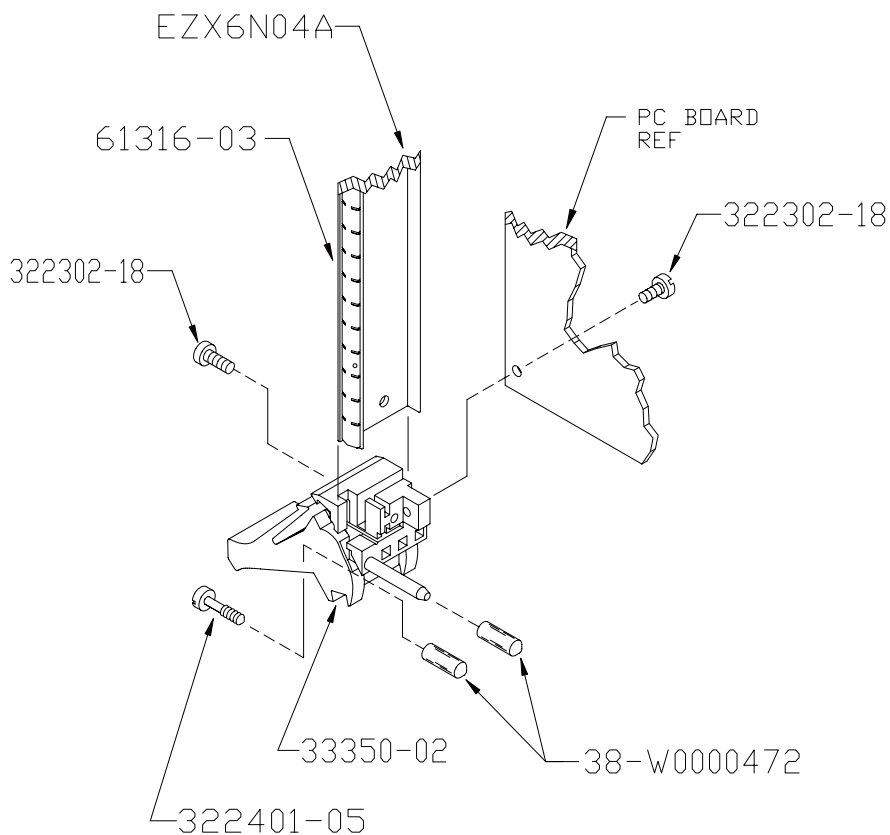



DWG. NO. EZX6N04A	THIS DOCUMENT CONTAINS PROPRIETARY INFORMATION WHICH MAY NOT BE DISCLOSED TO OTHERS REPRODUCED OR USED WITHOUT WRITTEN AUTHORITY FROM E. S. - UNIT OF ZERO CORPORATION.				
	REV.	DESCRIPTION	DR.	DATE	APPROVAL
	A	RELEASE	LA	06/07/97	S. ALANIZ
	-	PER ECO 10418	TP	7-27-98	S. ALANIZ
	-	DDC 7020	LA	04-13-05	R ALMEIDA
B	09/340 EDR	SC	02-16-09	SPG	

NOTES: UNLESS OTHERWISE SPECIFIED

- BAG AND TAG PROCEDURE FOR THIS ASSEMBLY:
 - PUT 322302-18 (QTY: 2) INTO SMALL POLY BAG
 - ASSEMBLE ALL REMAINING ITEMS AND PUT WITH BAG FROM "A" ABOVE INTO LARGE POLY BAG , TAG AND IDENTIFY WITH P/N: EZX6N04A REV B
- SHIP ONE COPY OF ASSEMBLY DRAWING
P/N: EZX6N04A SHEET 1 ONLY WITH EACH ORDER.
APPLY RoHS LABEL



UNLESS OTHERWISE SPECIFIED		TITLE		 <small>A ZERO CORPORATION COMPANY 3445 FLETCHER AVE. EL MONTE, CALIFORNIA 91731 TEL: (818) 579-2300 FAX: (818) 444-3953</small>			
TOLERANCES ON DECIMALS ANGLES $\pm .00$ -- $\pm .000$ --- \pm -		EMC INJECTOR/EJECTOR PANEL ASSY, 6U X 4HP				DWG. NO. <h1 style="margin: 0;">EZX6N04A</h1>	
NAME		DATE		CUSTOMER: ELECTRONIC SOLUTIONS			
DRAWN		L. ANGUIANO		5-28-97			
ENGR.		SAA		5-6-97			
APPROVED		S. ALANIZ		5-6-97			
CAD		EZX6N04A		EZX6N04A			
DISK		EZX6N04A		EZX6N04A			
SCALE: 1" = 1		USED ON:		FED CODE 62559			
				SHEET 1 OF 2			

DWG NO.	EZX6N04A	REV	B	SH	2
THIS DOCUMENT CONTAINS PROPRIETARY INFORMATION WHICH MAY NOT BE DISCLOSED TO OTHERS, REPRODUCED OR USED WITHOUT AUTHORITY FROM THE PROPRIETOR.					
REVISION HISTORY					
REV	DESCRIPTION	INC BY	DATE	APPROVED	
A	RELEASE	AR	06/09/97	S. ALANIZ	
-	ECO 10418	BD	07/27/98	S. ALANIZ	
-	DDC 1602	L ANGUIANO	08-08-00	S. ALANIZ	
-	DDC 7417	L ANGUIANO	12-5-05	S. ALANIZ	
B	09/340 EDR	SC	02-16-09	SPG	

NOTES:

1. APPLICABLE STANDARDS/SPECIFICATIONS:
ASME Y14.5M-1994, DIMENSIONS AND TOLERANCES
ASME Y14.38, ANSI Y14.38M, ABBREVIATIONS
MIL-HDBK-454, GUIDELINE 9, WORKMANSHIP.
ALL PROCESSING MUST COMPLY WITH 2002/95/EC RoHS.
PEP NE COSMETIC SPEC FOR FINISH
FRONT SURFACE - CLASS A , REMAINING SURFACES -CLASS B

2. REMOVE ALL BURRS AND SHARP EDGES.

3. MATERIAL:
USE EXTRUSION 61300-04

4. FINISH:
CHEM FILM PER MIL-C-5541, CLASS 3, CHROMATE,
CLEAR. TRIVALENT CHROMIUM.

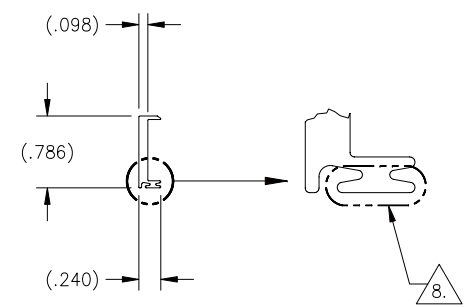
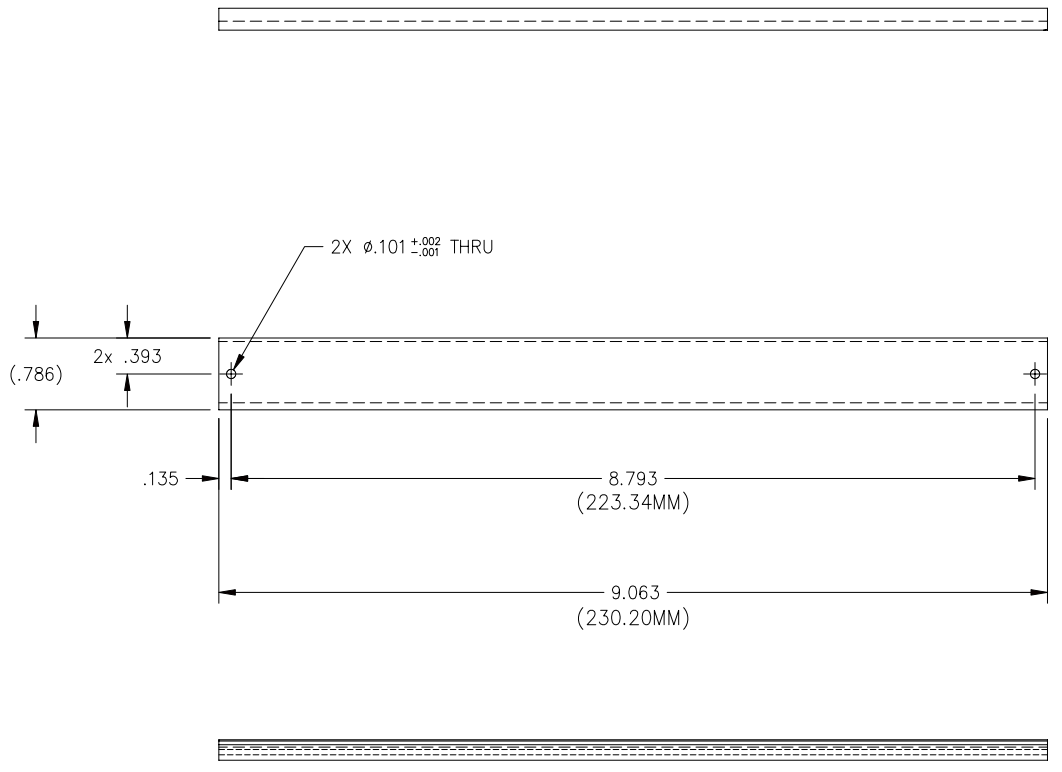
5. NOT USED

6. NOT USED

7. NOT USED

8. ENTIRE LENGTH OF SURFACE AND EDGES MUST BE SMOOTH,
FREE OF ALL NICKS AND BURRS.

GRAIN
240 GRIT
FINE



ITEM NO.	QTY REQD	UOM	ES PART NO.	MANUFACTURER MANUFACTURER NO.	DESCRIPTION	NOTE
2	-	EA	-	-	-	7.
UNLESS OTHERWISE SPECIFIED DIMENSIONS ARE IN INCHES. TOLERANCES ARE:			CUSTOMER APW ELECTRONIC SOLUTIONS		apw electronic solutions an apw company 14100 Danielson Street, Poway, CA 92084-8898 Tel: 600-854-7088 Fax: 656-678-4552 www.apw-elsol.com	
DECIMALS .XX±.02 .XXX±.010			APPROVALS DATE		TITLE FRONT PANEL, 6U X 4HP (EMC.10)	
ANGULAR ±1/2"			DRAWN B. DANG 02/03/97		SIZE D 62559 CAGE CODE DWG NO. EZX6N04A	
DO NOT SCALE DRAWING			CHECKED A. STEVEN 02/03/97		SCALE 1/1	
MATERIAL FINISH			ENGR S. ALANIZ 02/03/97		CALC.WT ACT.WT SHEET 2 of 2	
TAPE NO. 9579B			CAD FILE EZX6N04A			