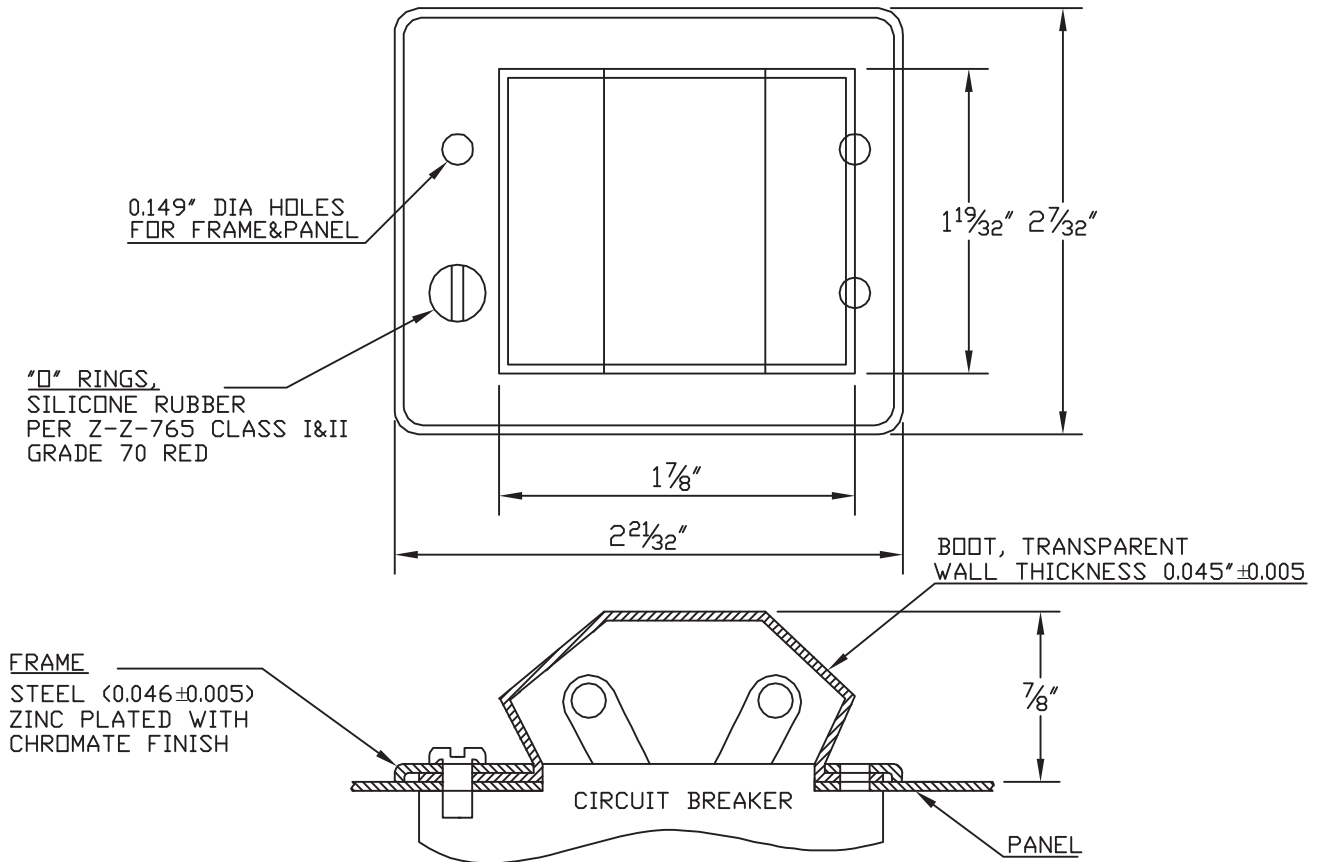


SPECIFICATION

Material: Boot: APM RUBRGLAS™ (transparent silicone rubber), conforms to A-A-59588, Class III Grade 50, Frame: steel, zinc plated with chromate finish. Screw: SEELSKREW® (self-sealing screws), stainless steel with silicone rubber O-ring.
Temperature Range: HEXSEAL: -94°F to +400°F
Pressure Range: Dust tight and splashproof.
Operational Life: 10,000 actuations (minimum).
Shelf Life: Excess of 25 years.
Resistant to: Salt spray, sunlight, ozone, weather, corona and most acids.

Notes:

1. Mounting screws are supplied in lengths shown unless otherwise specified.
 2. New sizes and types of RUBRGLAS-SEELS® are being added regularly. Please request other types and styles as required.
- Agency Recognition:** Front Panel mounted Circuit Breaker Boots are UL- listed to UL Std. 50, types 1,2,3,12,12K and 13.
 Back-of-Panel mounted Circuit Breaker boots are UL-listed to UL Std. 50, type 1, Also meet CSA standards.



NOTES:

ASSEMBLY CONSISTS OF 1 BOOT, MAT'L APM RUBRGLAS®, 1 FRAME
 MAT'L C.R.S. ZINC PLATED WITH CHROMATE FINISH, & 4-#32 APM SEELSKREWS® LENGTH = 3/8
 UNLESS OTHERWISE SPECIFIED

TOLERANCES: UNLESS OTHERWISE NOTED $\pm 1/32$

B	RUBBER and FRAME MAT'L CHANGED, WALL THICKNESS TOL. 0.010 CHANGED TO 0.005, HOLE DIM. Ø0.160" CHANGED TO Ø0.149", DELETED TO "DESIGN TO MEET MIL-5423" and DELETED TO SEELSKREW INFORMATION			S. GOK	05.04.09	
A	CAD COMPUTER GENERATED				11.13.02	
REV.	DESCRIPTION				DATE	
MAXIMUM AND MINIMUM MEASUREMENTS ARE STATED DIRECTLY ON EACH DIMENSION.		TITLE:	CIRCUIT BREAKER BOOT,		ENG.	
			TOGGLE, WIDE ANGLE,		DWN.	
MAT'L: RUBRGLASS ①			TRANSPARENT (2 POLES)		CHKD.	J. CELLA
CONFORMS TO A-A-59588 CL III		APM-HEXSEAL CORPORATION		SCALE	DWG. NO.	HE-1020
FINISH: GRADE 50				1 : 1		
TRANSPARENT						

THIS DRAWING COVERS PROPRIETARY ITEM AND IS THE PROPERTY OF THE APM-HEXSEAL CORPORATION.
 THIS DRAWING IS NOT TO BE COPIED OR USED WITHOUT THE WRITTEN APPROVAL OF AN OFFICER OF THE APM-HEXSEAL CORPORATION.