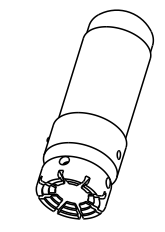


J2-100014			
REV	ECN #	DATE	APR
A	022668	12 MAY 04	AH
B	030995	01 MAR 06	KLW
C	032570	19 JUN 06	KLW
D	036465	13 MAR 07	KLW
E	038138	09 JUL 07	KLW
F	046808	12 JAN 09	KW
G	055715	25 MAY 10	KLW
H	B10858	15 MAR 19	KLW

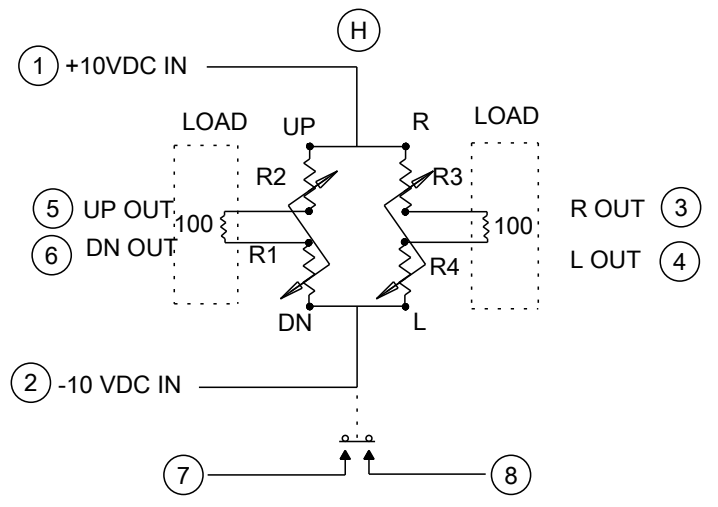
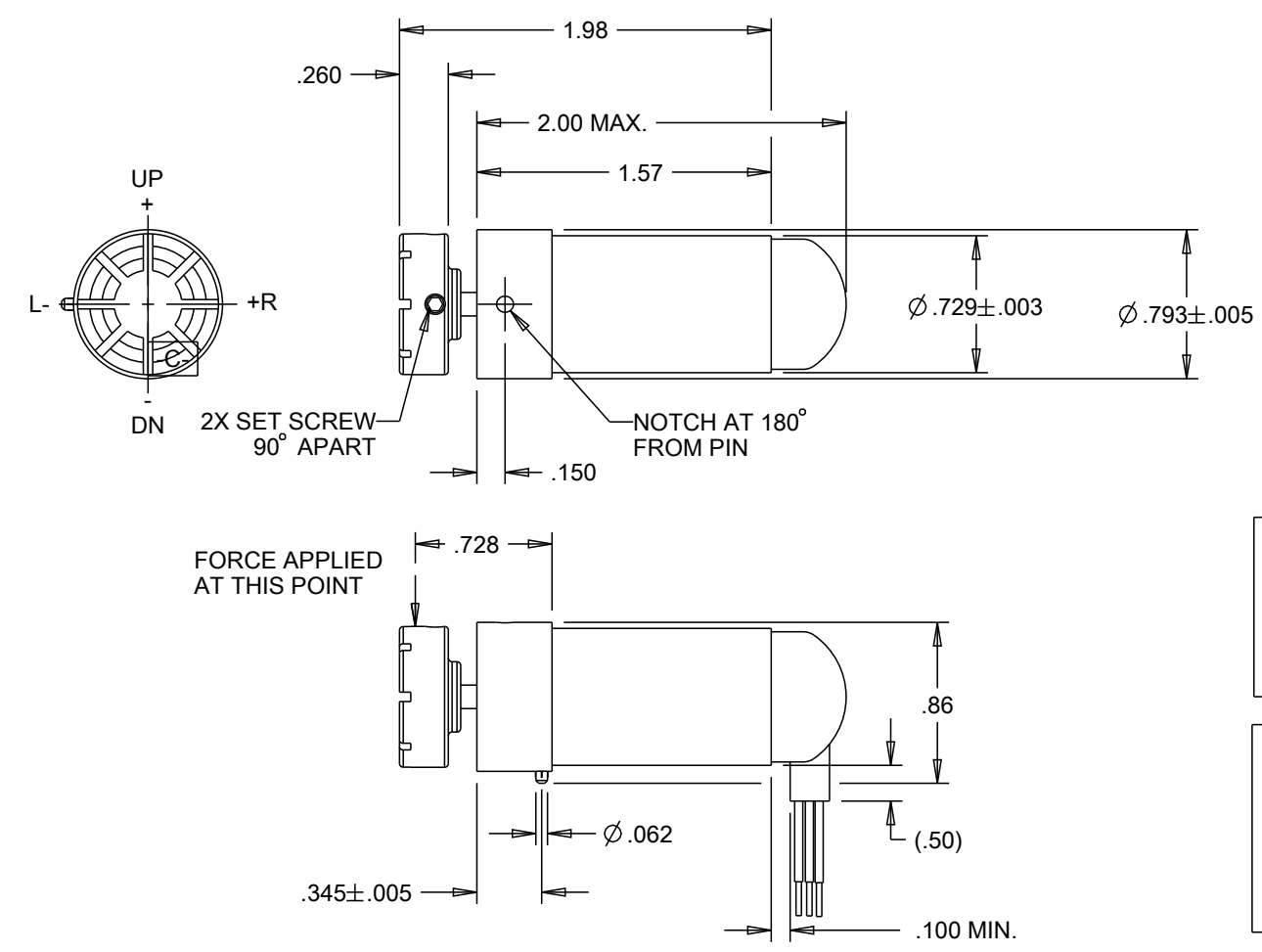


SCALE 1:1

SWITCH CHARACTERISTICS			
ELECTRICAL:	±10 VDC		
	MIN	TYP	MAX
SENSITIVITY WITH 100 OHM LOAD (VDC/LBS)	0.384	0.480	0.576
SENSITIVITY, NO LOAD, OUTPUTS CONNECTED (VDC/LBS)	0.4	0.5	0.6
INSULATION RESISTANCE	100 M Ω MIN. AT 50 VDC		
NULL TEMPERATURE COEFFICIENT	(H) ±.08% FULL SCALE PER DEGREE C MAX.		
NULL HYSTERESIS	±.012 VDC WITHIN 1 SECOND AFTER RELEASE		
SENSITIVITY TEMPERATURE COEFFICIENT	±.2% FULL SCALE PER DEGREE C		
NULL OUTPUT	-100 VDC	0	+100
RESOLUTION	INFINITE		
MECHANICAL:			
MECHANICAL/ELECTRICAL LIFE ALL DIRECTIONS	1,000,000 CYCLES		
TRAVEL (IN)		0.03	
OPERATING FORCE (LBS)		3.0	3.1
PULL OFF FORCE	15 LBS		
PUSHBUTTON OPERATING POINT (IN)	.08 MAX.		
PUSHBUTTON ACTUATION FORCE (LBS)	2.75	3.50	4.25
ENVIRONMENTAL:			
OPERATING TEMPERATURE (° C)	-40°		+71°
STORAGE TEMPERATURE (° C)	-54°		+85°
QUALIFICATION	IAW MIL-S-81619		
WEIGHT	0.10 LBS. MAX.		
MATERIAL:			
BUTTON	BLACK, DELRIN		
CASE	BLACK, ANODIZED ALUMINUM		
WIRES	22 AWG, IAW MIL-W-22759/11, 11 INCHES LONG MIN.		
MARKING	OTTO, 21649, J2-100014, DATE CODE & SERIALIZATION (YYWW-###)		

NOTES:

- OUTPUT VOLTAGE:
UP AND R ARE POSITIVE
DN AND L ARE NEGATIVE
- DESTRUCTION NOTICE:
FOR CLASSIFIED DOCUMENTS, FOLLOW THE PROCEDURES IN DOD 5220.22-M, INDUSTRIAL SECURITY PROGRAM REGULATION, CHAPTER IX.
FOR UNCLASSIFIED, LIMITED DOCUMENTS, DESTROY ANY METHOD THAT WILL PREVENT DISCLOSURE OF CONTENTS OR RECONSTRUCTION OF THE DOCUMENT.
- WARNING:
THIS DOCUMENT CONTAINS TECHNICAL DATA WHOSE EXPORT IS RESTRICTED BY THE ARMS EXPORT CONTROL ACT (TITLE 23, U.S.C., SEC 2751, ET SEQ) OR EXECUTIVE ORDER 12470. VIOLATORS OF THESE EXPORT LAWS ARE SUBJECT TO SEVERE CRIMINAL PENALTIES.
- DISTRIBUTION STATEMENT D:
DISTRIBUTION AUTHORIZED TO THE DEPARTMENT OF DEFENSE AND U.S. DOD CONTRACTORS ONLY, FOR DEVELOPMENT INFORMATION WITH A DATE OF DETERMINATION OF 28 AUGUST 2002 OR SEE DATA ITEM FOR REASON AND DATE OF DETERMINATION. OTHER REQUESTS SHALL BE REFERRED TO 00-ALC/LCA.



WIRES NOT SHOWN IN ALL VIEWS FOR CLARITY.

CONTROLLED DRAWING
THIS ITEM IS TO BE MANUFACTURED USING LEADED SOLDER AND IS NOT INTENDED TO BE IN COMPLIANCE WITH THE REQUIREMENTS OF WEEE AND RoHS

CUSTOMER CONTROLLED DRAWING
THIS ITEM IS CUSTOMER/ATP CONTROLLED. NO CHANGES TO THIS DOCUMENT ARE PERMITTED W/O PRIOR CUSTOMER APPROVAL

KEY CHARACTERISTICS
SR SPECIAL REQUIREMENT

UNLESS OTHERWISE SPECIFIED:
DIMENSIONS ARE IN INCHES.
TOLERANCES:
.XX ±.03
.XXX ±.010
ANGLES ±2°
DO NOT SCALE

OTTO
CARPENTERSVILLE, ILLINOIS USA

THIS DOCUMENT IS THE CONFIDENTIAL PROPERTY OF OTTO ENGINEERING, INC.. IT IS NOT TO BE USED IN ANY WAY DETRIMENTAL TO THE INTERESTS OF OTTO ENGINEERING, INC..

DESCRIPTION				
J2, TRANSDUCER WITH PUSHBUTTON				
DRWN. JLW	SIZE B	FSCM NO 21649	DRAWING NO. J2-100014	REV. H
CHKD. KLW				
APPD. AH				
THIRD ANGLE PROJECTION			Scale 1:1	Sheet 1 OF 1