

MICRO SWITCH

A DIVISION OF MINNEAPOLIS-HONEYWELL REGULATOR COMPANY
PROSPERITY, ILLINOIS

FED. MFR. CODE 91929

ACTUATOR-SWITCH

CATALOG LISTING

JV-20

5

JV-20

M

DRAWING NUMBER

99 13

ISSUE 10/12/53

REVISIONS

A CO. 10437

R. L. H. 9 MAY 58

B C.O. 10620

JAV. 12 JULY 58

C CO13876

M B F 8 JULY 59

D CO26511

R E R 21 OCT 69

E CO34626

R E R 7 FEB 75

F CO74163

D H D 22 APR 85

(M) JV-20
REPLACES ISSUE 7

RELEASE NO. 6

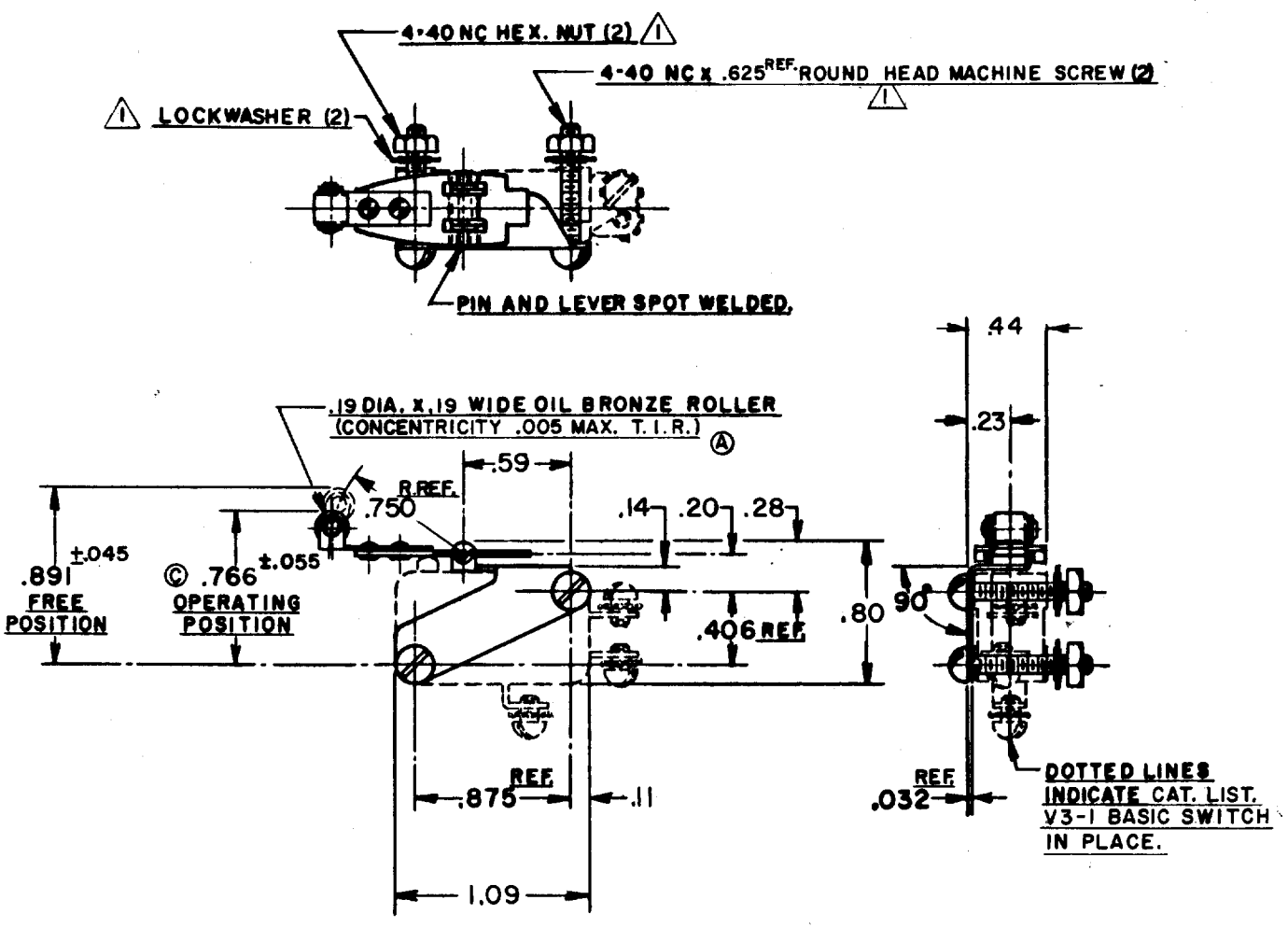
CHECK 10 MAY 56

CHECK 10 MAY 56

CHECK 11 MAY 56

CHECK 56

DRAWN R. L. H. 9 MAY 56



NOTE -
 ⚠-FURNISHED UNASSEMBLED
 2- ACTUATOR NOT SATISFACTORY FOR USE ON V3-600 AND 700 SERIES SWITCHES. Ⓑ

THIS DRAWING COVERS A PROPRIETARY ITEM AND IS THE PROPERTY OF MICRO SWITCH, A DIVISION OF HONEYWELL. THIS DRAWING IS NOT TO BE COPIED OR USED WITHOUT THE APPROVAL OF MICRO SWITCH.

CHARACTERISTICS WITH V3-1 BASIC SWITCH INSTALLED	ELECTRICAL DATA		SCALE FULL	
OPERATING FORCE ----- 5 OZ. MAX.	CONTACT ARRANGEMENT	BREAK DISTANCE	DO NOT SCALE PRINT	
RELEASE FORCE ----- 1 OZ. MIN.			UNLESS OTHERWISE SPECIFIED	
PRETRAVEL ----- .198 MAX.			DIMENSIONS ARE IN INCHES	
DIFFERENTIAL TRAVEL ----- .078 MAX.			TOLERANCES ARE:	
OVERTRAVEL ----- .062 MIN.			ONE PLACE (.0) ±.030 TWO PLACE (.00) ±.015 THREE PLACE (.000) ±.005 ANGLES ± 2°	
			WEIGHT .027 LB MAX Ⓒ	