



A COMPANY OF STPI GROUP

# **E610 & ES610**

## **Military Specified**

### **Meets MIL-PRF-83536**

#### **General Characteristics**

Number of Poles:  
Dimensions:

6 Form C (6PDT)  
1.483" x 1.053" x 1.010"  
(37.7mm x 26.8mm x 25.7mm)  
0.26 lb. (118 grams)

Weight:

#### **Switching Characteristics**

Operate Time @ 25°C:  
Release Time @ 25°C:  
Bounce Time:  
Mechanical Life:

15 ms Max.  
15 ms Max.  
1 ms Max.  
400,000 Cycles

#### **Environmental Characteristics**

Temperature Range:  
Vibration (Sinusoidal):  
Shock (any axis):  
Seal:

-70°C to +125°C  
20g 10-2,000 Hz  
50g, 6-9 ms  
Hermetic (1x10<sup>-8</sup> atm cm<sup>3</sup>/s)

#### **Electrical Characteristics**

Contact Voltage Drop (at rated resistive load)

-Initial:

-After Guaranteed Life:

150 mV Max.  
175 mV Max.

Dielectric Strength

Coil to Case @ Sea Level

-Initial @ 60 Hz:

-After Life Test @ 60 Hz:

All Other Points @ Sea Level

-Initial @ 60 Hz:

-After Life Test @ 60 Hz:

1,000 Vrms  
1,000 Vrms

1,250 Vrms  
1,000 Vrms

Insulation Resistance

-Initial:

-After Life Tests:

Back EMF (Transient Voltage):

100 MΩ Min, @ 500 Vdc

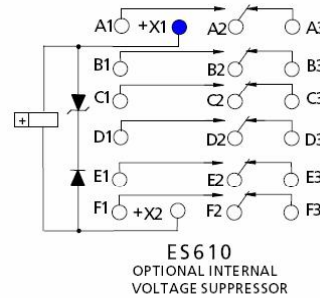
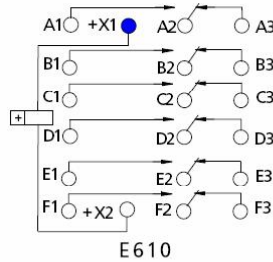
50 MΩ Min, @ 500 Vdc

42 Vdc Max. (ES610 Only)

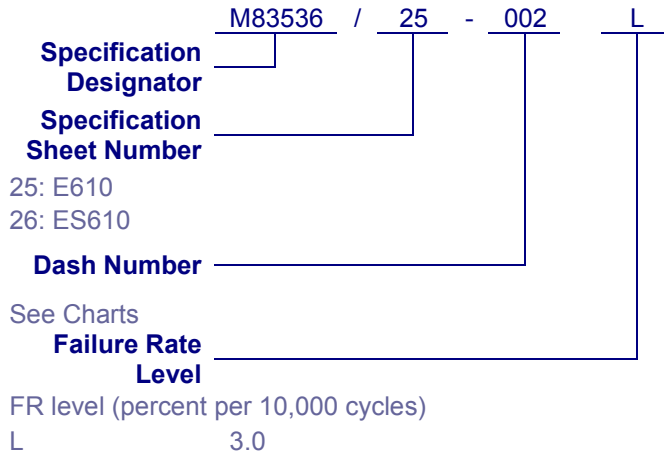
#### **Contact Rating (Amps)**

Type of Load (High Level)	Cycles x 10 <sup>3</sup>	28 Vdc	115 Vac 400 Hz 1 Phase	115 Vac 50/60 Hz 1 Phase	115/200 Vac 400 Hz 3 Phase	115/200 Vac 50/60 Hz 3 Phase
Resistive	100	10	10	2.5	10	2.5
Inductive	20	8	8	N/A	8	N/A
Inductive	10	N/A	N/A	2.5	N/A	2.5
Motor	100	4	4	2	4	2
Lamp	100	2	2	1	N/A	N/A

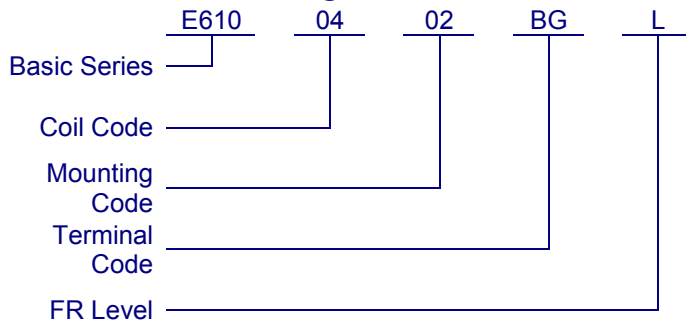
### Circuit Diagram



### Military Part Numbering



### QPL Part Numbering



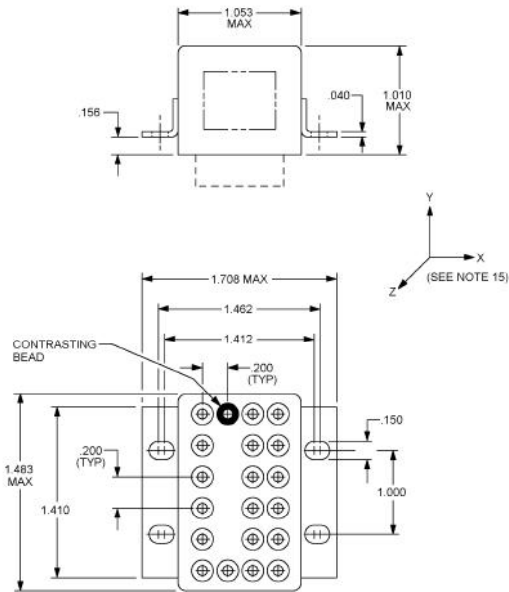
### Dash Numbers – Specification Sheet Number 25: E610

Dash Number	Coil Code	Mount	Terminals	Coil Voltage	Max Pickup Voltage at 25°C	Max Pickup Voltage at 125°C	Max Hold Voltage at 125°C	Min Dropout Voltage at -70°C	Coil Resistance (Ω, +/- 10% at 25°C)
001	04	02	AT	28	14	18.7	7	1.5	210
002	04	02	BG	28	14	18.7	7	1.5	210

### Dash Numbers – Specification Sheet Number 26: ES610

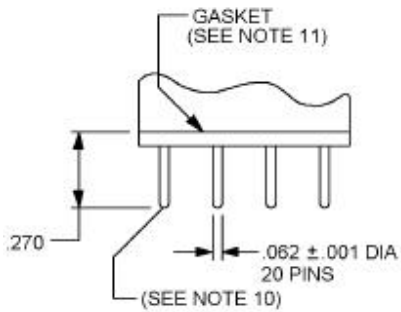
Dash Number	Coil Code	Mount	Terminals	Coil Voltage	Max Pickup Voltage at 25°C	Max Pickup Voltage at 125°C	Max Hold Voltage at 125°C	Min Dropout Voltage at -70°C	Coil Resistance (Ω, +/- 10% at 25°C)
001	04	02	AT	28	14	18.7	7	1.5	210
002	04	02	BG	28	14	18.7	7	1.5	210

## Mounting Styles

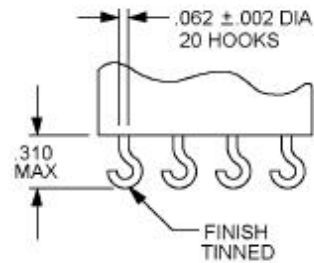


Mount 02:  
Raised Vertical Flange Mount

## Terminal Styles



Terminal BG:  
Gold Plated Plug in



Terminal AT:  
Tin Plated Solder Hook