

P3-90011

CHARACTERISTICS

ELECTRICAL:

RATINGS: SEA LEVEL	
LOAD	28VDC-115VAC
RESISTIVE	10 AMPS
INDUCTIVE	5 AMPS
LAMP	3 AMPS

ELECTRICAL LIFE: 100,000 CYCLES

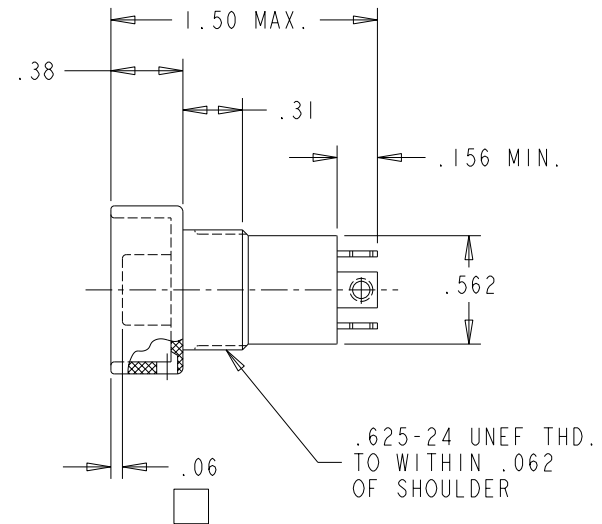
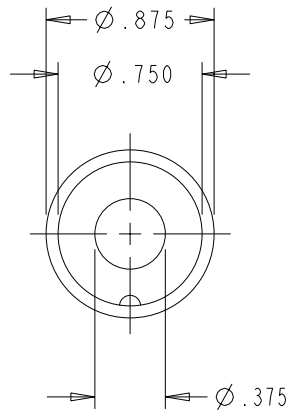
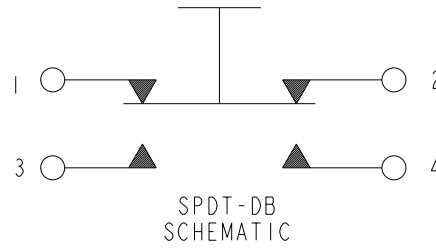
MECHANICAL:

TOTAL TRAVEL: .085±.015 X B  
 OVERTRAVEL: .012 MIN. ■  
 RESET TRAVEL: .012 MIN. ■  
 MOVEMENT DIFFERENTIAL: .015 MIN. X  
 OPERATING FORCE: 2.5 ±.8 LBS.  
 RESET FORCE: 0.75 LB. MIN.  
 MECHANICAL LIFE: 1,000,000 CYCLES

PHYSICAL:

TEMPERATURE RANGE: -55°C TO +85°C  
 ENCLOSURE DESIGN: DUSTTIGHT,  
 PER IP64 B  
 BUTTON: NYLON, BLACK  
 CASE: BLACK ANODIZED,  
 ALUMINUM ALLOY

MARKING: OTTO, 21649  
 P3-90011, DATE CODE (YYWW) B  
 & TERM. IDENT.



NOTES:

MOUNTING HARDWARE INCLUDES:  
 HEXNUT & LOCKWASHER.

OTTO CONTROLS  
 DIVISION OF  
 OTTO ENGINEERING INC.  
 CARPENTERSVILLE, ILLINOIS USA

PART NAME  
 SWITCH, PUSHBUTTON

MINOR X MAJOR  CRITICAL ▲ SPC CRITICAL

UNLESS OTHERWISE SPECIFIED:  
 DIMENSIONS ARE IN INCHES.  
 TOLERANCES ARE AS LISTED.  
 MUST BE FREE FROM BURRS  
 AND SHARP EDGES.

TOLERANCES  
 .XX ±.03  
 .XXX ±.010  
 ANGLES ±2°  
 DO NOT SCALE DRAWING.  
 THIRD ANGLE  
 PROJECTION

THIS DOCUMENT IS THE CONFIDENTIAL  
 PROPERTY OF OTTO ENGINEERING, INC..  
 IT IS PROVIDED ON A RESTRICTED  
 BASIS AND IS NOT TO BE USED IN ANY  
 WAY DETRIMENTAL TO THE INTERESTS  
 OF OTTO ENGINEERING, INC..

DRWN. JHK	SIZE	FSCM NO	DRAWING NO.	REV.
CHKD. RE	A	21649	P3-90011	B
APPD. RG				
DATE 11 JUL 96	WT.	SCALE 1:1	SHEET 1 OF 1	