

P3-90093-3

LET	OCN #	DATE	APR
A	922407	24 JUN 92	HR
B	922608	07 JUL 92	HR
C	974416	24 NOV 97	RG
D	000822	20 APR 99	GP

CHARACTERISTICS

ELECTRICAL:

RATINGS:	SEA LEVEL	
LOAD	28 VDC	115 VAC
RESISTIVE	10 AMPS	10 AMPS
INDUCTIVE	5 AMPS	5 AMPS
LAMP	3 AMPS	3 AMPS
MOTOR	5 AMPS	
DWV	1050 VRMS	

ELECTRICAL LIFE: 100,000 CYCLES AT FULL LOAD

MECHANICAL:

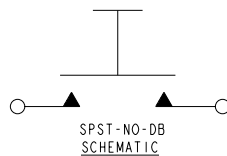
TOTAL TRAVEL: .075±.015 D
 OVERTRAVEL: .012 MIN.
 RESET TRAVEL: .012 MIN.
 MOVEMENT DIFFERENTIAL: .015 MIN.
 OPERATING FORCE: 2.5 $\frac{1}{16}$ LBS.
 RESET FORCE: 0.75 LB. MIN.
 MECHANICAL LIFE: 1,000,000 CYCLES

PHYSICAL:

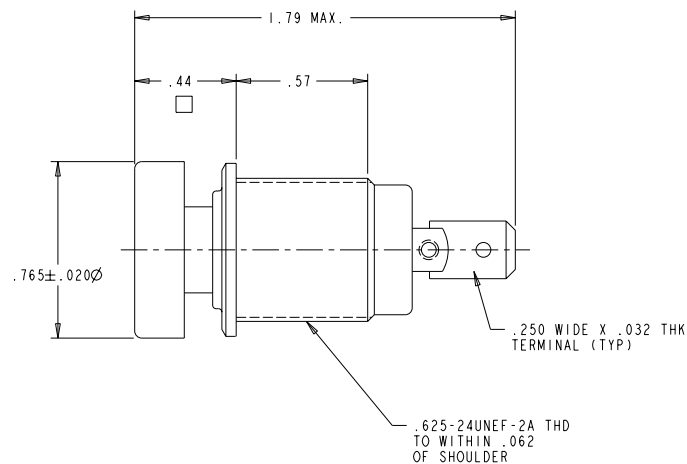
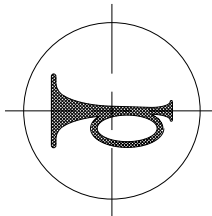
TEMPERATURE RANGE: -55°C TO +85°C D
 ENCLOSURE DESIGN: WATERTIGHT PER IP68S, 1 METER
 BUTTON: YELLOW POLYESTER WITH BLACK GRAPHICS PER IP68S, 1 METER
 CASE: BLACK ANODIZED ALUMINUM ALLOY

MARK: OTTO, 21649,
 P3-90093-3 &
 DATE CODE (YYWW)

MOUNTING HARDWARE:
 HEXNUT & LOCKWASHER



CAUTION
 ANY ROTATIONAL FORCE APPLIED
 TO THE BUTTON IN EXCESS OF
 20 IN. OZ. MAY RESULT IN
 INTERNAL SWITCH DAMAGE.



NOTE:
 GRAPHICS TO BE ALIGNED WITH \angle
 OF TERMINALS WITHIN $\pm 5^\circ$

UNLESS OTHERWISE SPECIFIED: DIMENSIONS ARE IN INCHES. TOLERANCES: .XX ±.03 .XXX ±.010 ANGLES $\pm 2^\circ$ DO NOT SCALE THIRD ANGLE PROJECTION	OTTO CONTROLS DIVISION OF OTTO ENGINEERING INC. CARPENTERSVILLE, ILLINOIS USA		PART NAME PUSHBUTTON SWITCH MOD "H" CASE .76 BUTTON			
	THIS DOCUMENT IS THE CONFIDENTIAL PROPERTY OF OTTO ENGINEERING, INC.. IT IS PROVIDED ON A RESTRICTED BASIS AND IS NOT TO BE USED IN ANY WAY DETRIMENTAL TO THE INTERESTS OF OTTO ENGINEERING, INC..	DRWN. KA CHKD. HR APPD. BG	SIZE B	FSCM NO 21649	DRAWING NO. P3-90093-3	REV. D
<input type="checkbox"/> MINOR <input checked="" type="checkbox"/> MAJOR <input checked="" type="checkbox"/> CRITICAL <input checked="" type="checkbox"/> SPC CRITICAL	DATE 19 JUL 91	WT.	SCALE 2:1	SHEET 1 OF 1		