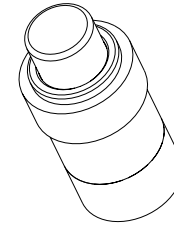


NOTES:

- DRAWING TO BE INTERPRETED IN ACCORDANCE WITH THE CURRENT REVISION OF ASME Y14.5M.
- THIS PART/PRODUCT IS TO BE MANUFACTURED WITH THE APPLICABLE REGULATIONS OF EC DIRECTIVES 2002/95/EC AND 2002/96/EC, RESTRICTION OF THE USE OF HAZARDOUS SUBSTANCES IN ELECTRICAL AND ELECTRONIC EQUIPMENT (ROHS) AND WASTE ELECTRICAL AND ELECTRONIC EQUIPMENT (WEEE).



SCALE 1:1

P5-100039

REV	OCN #	DATE	APR
A	036309	05 MAR 07	REO
B	036618	27 MAR 07	REO
C	039799	25 OCT 07	REO

CHARACTERISTICS

ELECTRICAL:

RATINGS:		SEA LEVEL	
LOAD	28 VDC	115 VAC	
RESISTIVE	10 AMPS	10 AMPS	
INDUCTIVE	5 AMPS	5 AMPS	
LAMP	1 AMP	1 AMP	
MOTOR	3 AMPS	3 AMPS	
DWV	1050 VRMS		

ELECTRICAL LIFE: 25,000 CYCLES

MECHANICAL:

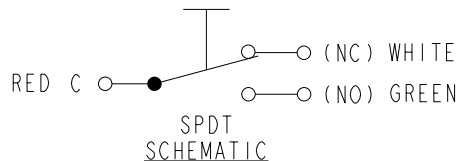
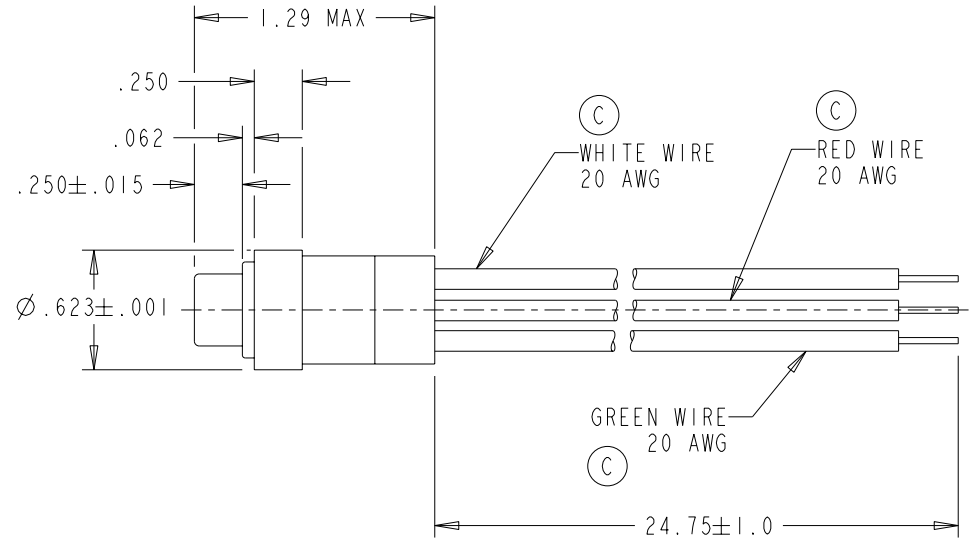
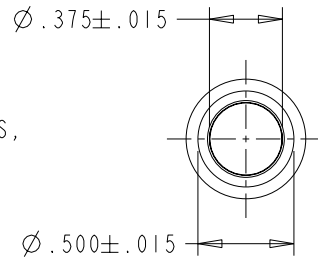
- TOTAL TRAVEL: .180 MAX.
- OVERTRAVEL: .012 MAX.
- OPERATE FORCE: 3.0 ^{+1.0} _{-0.5} LBS.
- MECHANICAL LIFE: 1,000,000 CYCLES

PHYSICAL:

- TEMPERATURE RANGE: -55°C TO +85°C
- ENCLOSURE DESIGN: WATERTIGHT PER IP68S, 1 METER
- BUTTON: THERMOPLASTIC, BLACK
- CASE: BLACK ANODIZED ALUMINUM ALLOY

MARKING:

- OTTO 21649
- P5-100039
- DATE CODE (YYWW)



■ MANUFACTURING ▲ SPC

OTTO

CARPENTERSVILLE, ILLINOIS USA

DESCRIPTION

P5, SPECIAL,
W/ RED, WHITE AND GREEN WIRES

UNLESS OTHERWISE SPECIFIED:
DIMENSIONS ARE IN INCHES.
TOLERANCES ARE AS LISTED.
MUST BE FREE FROM BURRS
AND SHARP EDGES.

TOLERANCES
.XX ± .03
.XXX ± .010
ANGLES ± 2°
DO NOT SCALE DRAWING.

THIS DOCUMENT IS THE CONFIDENTIAL
PROPERTY OF OTTO ENGINEERING, INC..
IT IS NOT TO BE USED IN ANY WAY
DETRIMENTAL TO THE INTERESTS
OF OTTO ENGINEERING, INC..

DRWN. RDN	SIZE	FSCM NO	DRAWING NO.	REV.
CHKD. RDN	A	21649	P5-100039	C
APPD. RTK				
WT.	THIRD ANGLE PROJECTION	Scale 1:1	Sheet 1 OF 1	