



# MICRO SWITCH

FREEDPORT, ILLINOIS, U.S.A.  
A DIVISION OF HONEYWELL

FED. MFG. CODE 91929

# SWITCH-BASIC

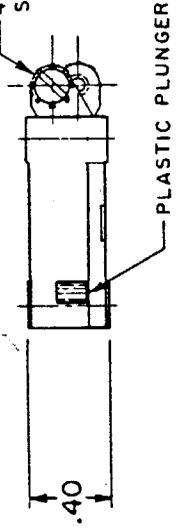
CATALOG LISTING

★ V 3 - 1

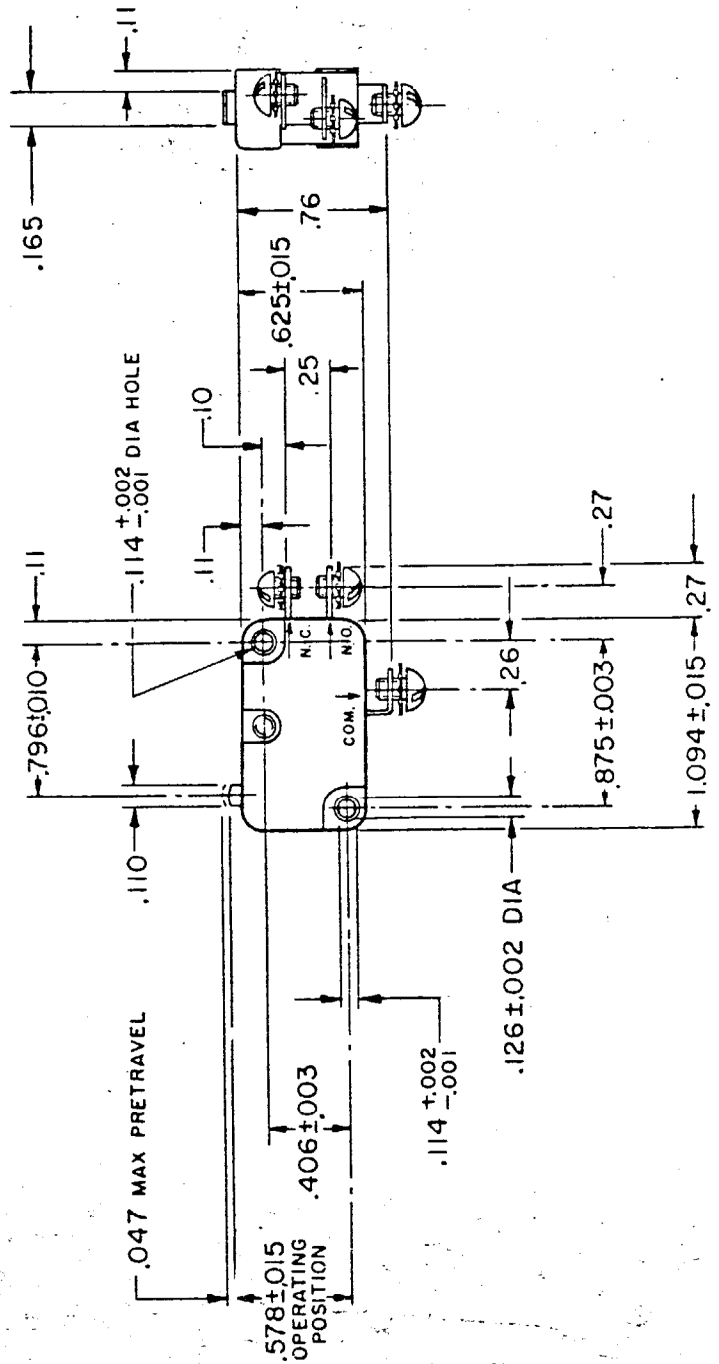
CK-A0100

S

4-40 NC X .125 REF ROUND HEAD TERMINAL  
SCREW AND LOCKWASHER (3) ©



PLASTIC PLUNGER



THIS DRAWING COVERS A PROPRIETARY ITEM AND IS THE PROPERTY OF MICRO SWITCH, A DIVISION OF HONEYWELL. THIS DRAWING IS NOT TO BE COPIED OR USED WITHOUT THE APPROVAL OF MICRO SWITCH.

### CHARACTERISTICS

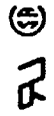
OPERATING FORCE	6 - 14	OZ
RELEASE FORCE	4	OZ MIN
DIFFERENTIAL TRAVEL	.006 - .016	
OVERTRAVEL	.040 MIN	
FREE POSITION	.625 MAX	
RELEASE TRAVEL	.007 MIN	

### ELECTRICAL DATA

CONTACT ARRANGEMENT  
S P D T

15.1A 1/2HP 125 OR 250 VAC  
1/2A 125 VDC, 1/4A 250 VDC  
5A 125 VAC "L"

L83



WEIGHT .017 LB

SCALE FULL

DO NOT SCALE PRINT

UNLESS OTHERWISE NOTED

DIMENSIONS ARE IN INCHES

TOLERANCES ARE:

ONE PLACE ±.030

TWO PLACE ±.015

THREE PLACE ±.005

ANGLES ±

REPLACES

RELEASE NO.

67 MAY 65

CHECK

18 MAY 65

CHECK

6 MAY 65

GCH

CHECK

6 MAY 65

M B T

DRAWN