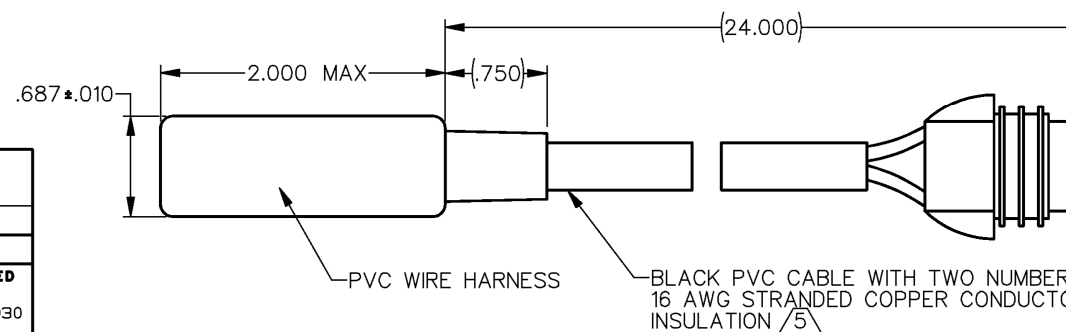
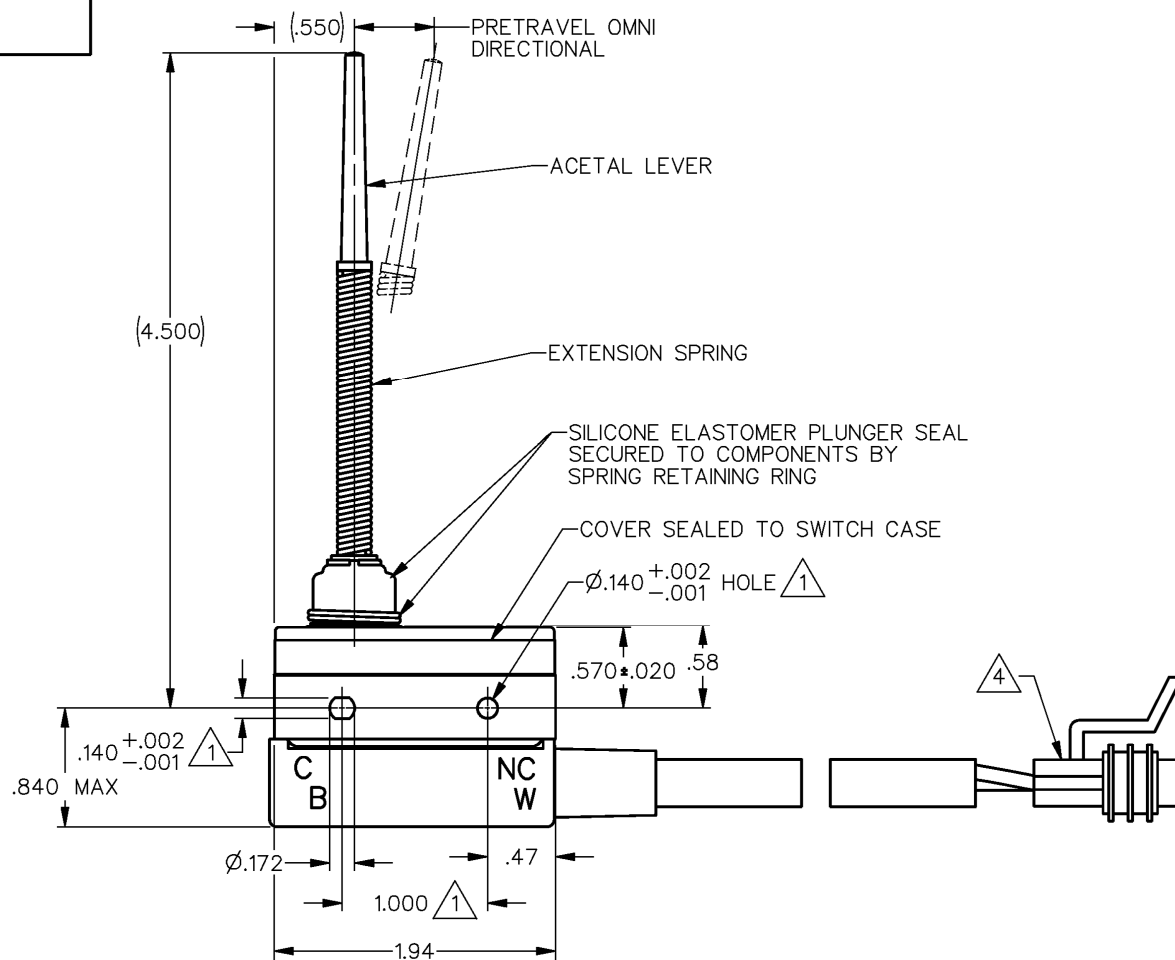



NOTES

- 1 MOUNTING HOLES WILL ACCEPT PINS OR SCREWS OF $\phi .139$
MAX ON 1.000 \pm .002 CENTERS
- 2 - SEALED CONSTRUCTION PROVIDES SPLASH RESISTANCE
- 3 - ACTUATOR LEVER PROVIDES OMNI DIRECTIONAL ACTUATION
- 4 PACKARD-METRIPAK 280 SERIES
15300027 CONNECTOR
12010293 SEAL
12077412 TERMINAL
15300014 SEC LOCK
- 5 BLACK LEAD IS ATTACHED TO THE COMMON TERMINAL
WHITE LEAD IS ATTACHED TO THE N.C. TERMINAL



ELECTRICAL DATA	
CONTACT ARRANGEMENT	
S P N C	
15A-125,250 OR 480 VAC	

THIRD ANGLE PROJECTION	
	
SCALE	FULL
DO NOT SCALE PRINT	
UNLESS OTHERWISE SPECIFIED TOLERANCES ARE	
ONE PLACE	(.0) ±.030
TWO PLACE	(.00) ±.015
THREE PLACE	(.000) ±.005
ANGLES	±
WEIGHT	

ANSI Y14.5M-1982 APPLIES