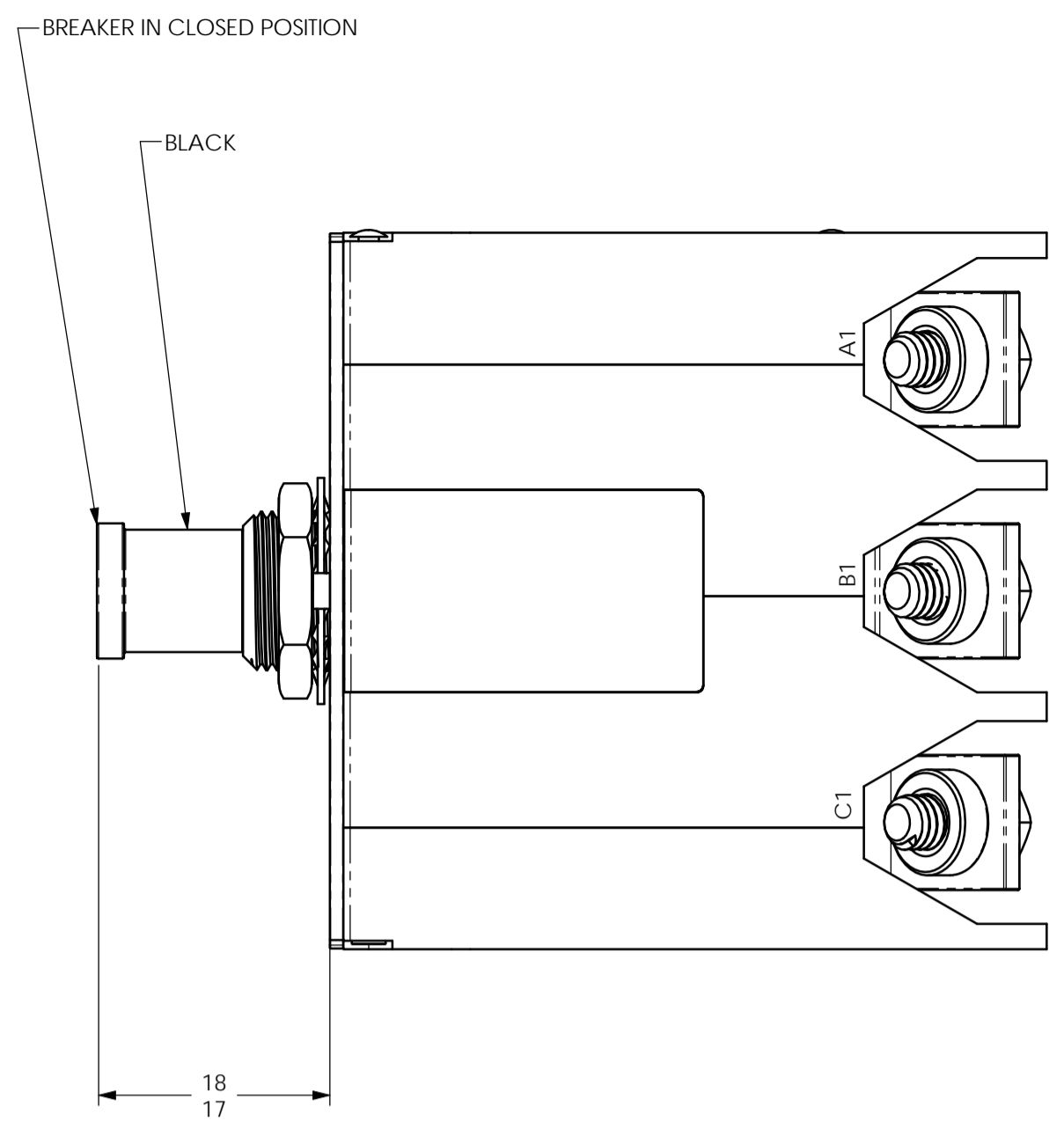
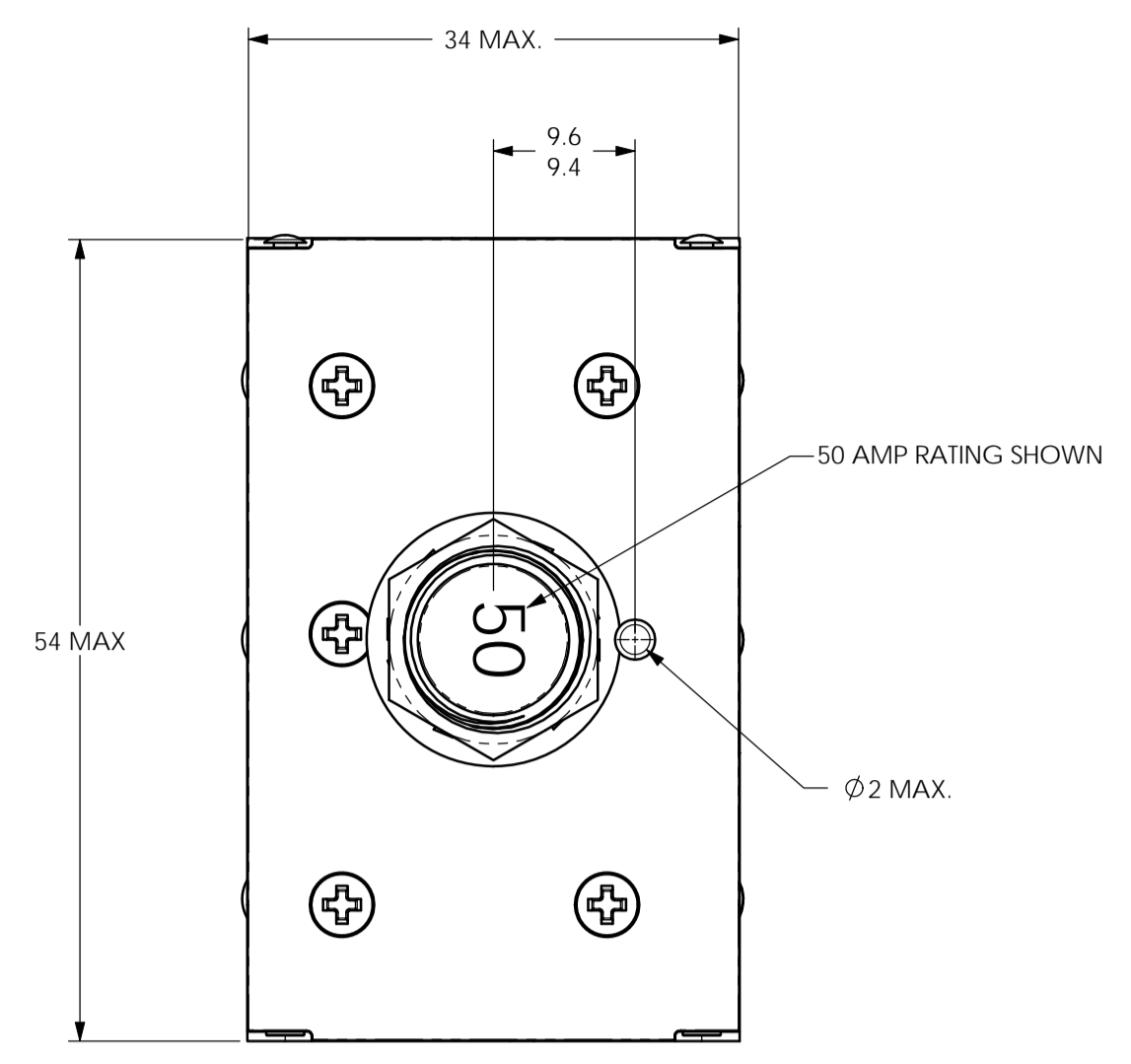
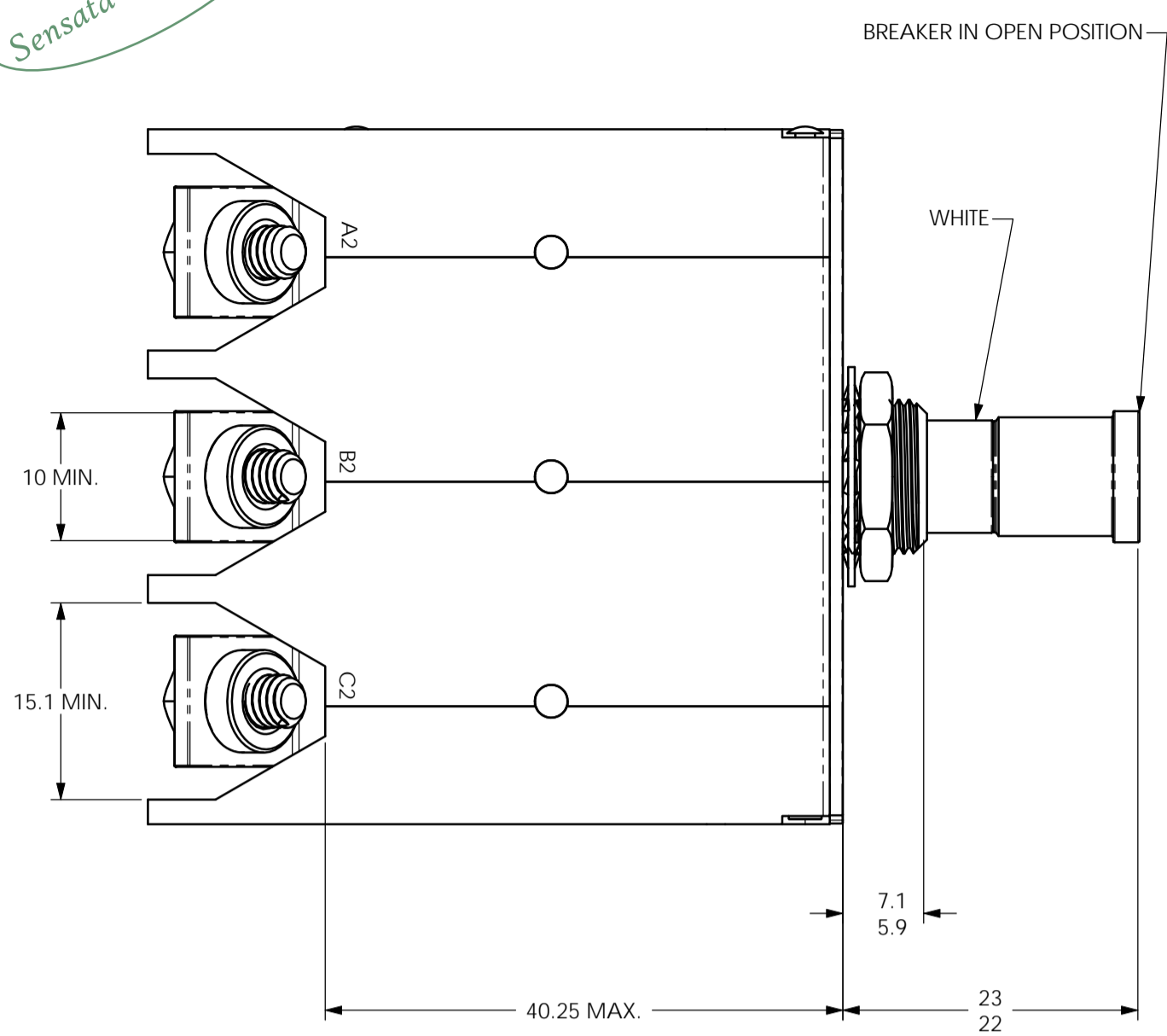


Property of
Sensata Technologies



ZONE	REV.	REVISION DESCRIPTION	ECN NO.	DATE
B3	J	ADDED 30 AMP TO VOLTAGE DROP SECTION; ADDED 151C50-30 TO SENSATA TECHNOLOGIES PART NO. SECTION: GML	ECO-063304	07-MAR-2011

- NOTES:
- EPOXY SURFACES ARE NON-DIMENSIONED. ENVELOPE DIMENSIONS DO NOT APPLY TO THESE EPOXY SURFACES.
 - TERMINAL AND MOUNTING HARDWARE MAY BE PACKAGED RATHER THAN INSTALLED.
 - COUNTRY OF ORIGIN IS SHOWN FOR ILLUSTRATION PURPOSES ONLY. COUNTRY OF ORIGIN WILL BE IDENTIFIED AS REQUIRED.
 - DATE CODE PER 10588-285.
 - MARK IN APPROXIMATE POSITION SHOWN IN BLACK INK PER 12506-70.
 - VOLUME: 2.4859 CUBIC INCHES

PERFORMANCE CHARACTERISTICS

DETAIL PERFORMANCE PER prEN2665-001 AND prEN2665-004.

VIBRATION	CURVE 'J' OF EUROCAE ED-14B, 3 G'S, 2000 HZ
MECHANICAL SHOCK	50 G'S
CORROSION	SALT SPRAY 48 HOURS
HUMIDITY	48 HOURS

ENDURANCE:

115 VAC MECHANICAL	400 HZ INDUCTIVE NO LOAD	2500 CYCLES	5000 CYCLES
SINGLE * OR THREE PHASE CALIBRATION:	20 AMP THRU 50 AMP		
MIN. ULT. TRIP	MAX. ULT. TRIP	200% (SEC.)	500% (SEC.)
+23°C (+73°F)	110% RATING	145% RATING	145% RATING
+70°C (+158°F)	105% RATING	145% RATING	145% RATING
+90°C (+194°F)	100% RATING	145% RATING	145% RATING
-55°C (-67°F)	110% RATING	145% RATING	145% RATING
		3 POLES / 1 POLE	3 POLES / 1 POLE
		2-20 / 2-22	0.15-4 / 0.15-5.2
		1.5-19 / 1.5-21	0.15-4.0 / 0.15-5.2
		3-60 / 3-110	0.15-4.0 / 0.15-5.2
		100% (SEC.)	1000% (SEC.)
		3 POLES / 1 POLE	3 POLES / 1 POLE
		0.05-1.0 / 0.06-1.3	0.05-1.0 / 0.06-1.3
		0.05-1.0 / 0.06-1.3	0.05-1.0 / 0.06-1.3

SHORT CIRCUIT RESISTANCE:

20 AMP THRU 50 AMP	115 VAC, 400 HZ	1500 AMPS RMS
--------------------	-----------------	---------------

OPERATIONAL FORCES:

PULL OUT	5 - 45 N (1.1 - 10.1 LBS.)
RESET	20 - 80 N (4.5 - 18 LBS.)

OPERATING ALTITUDE: 15,000 M (49,200 FT.)

WEIGHT INCLUDING CONNECTION HARDWARE:

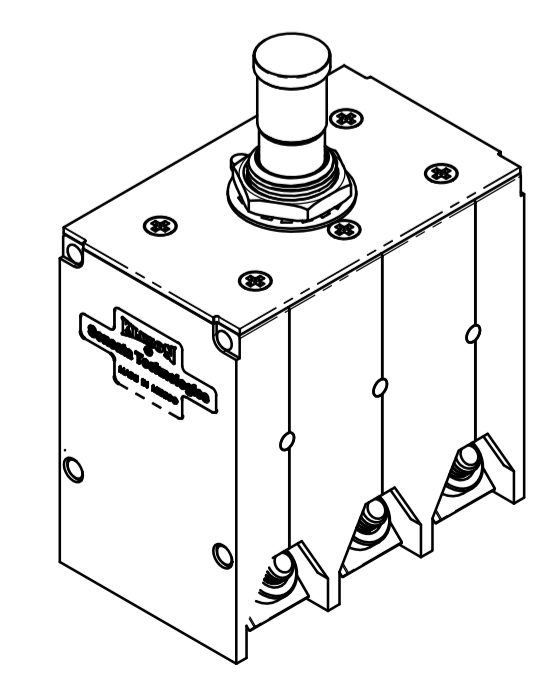
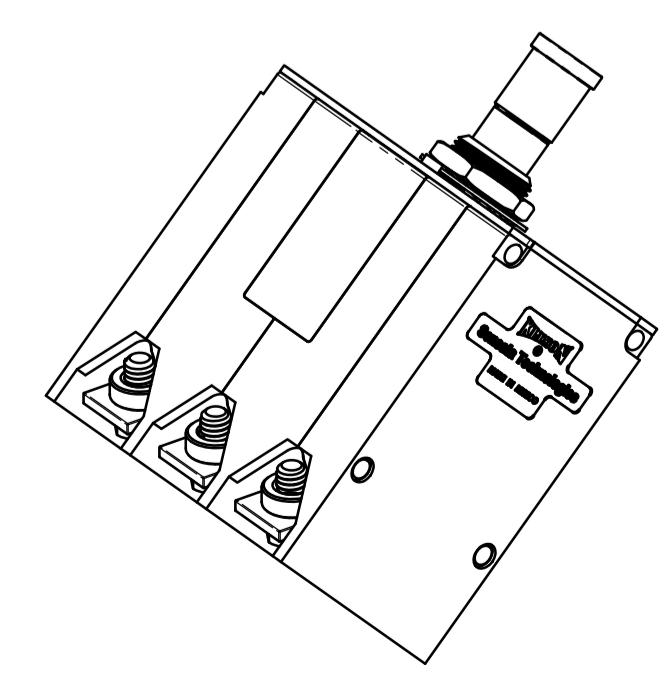
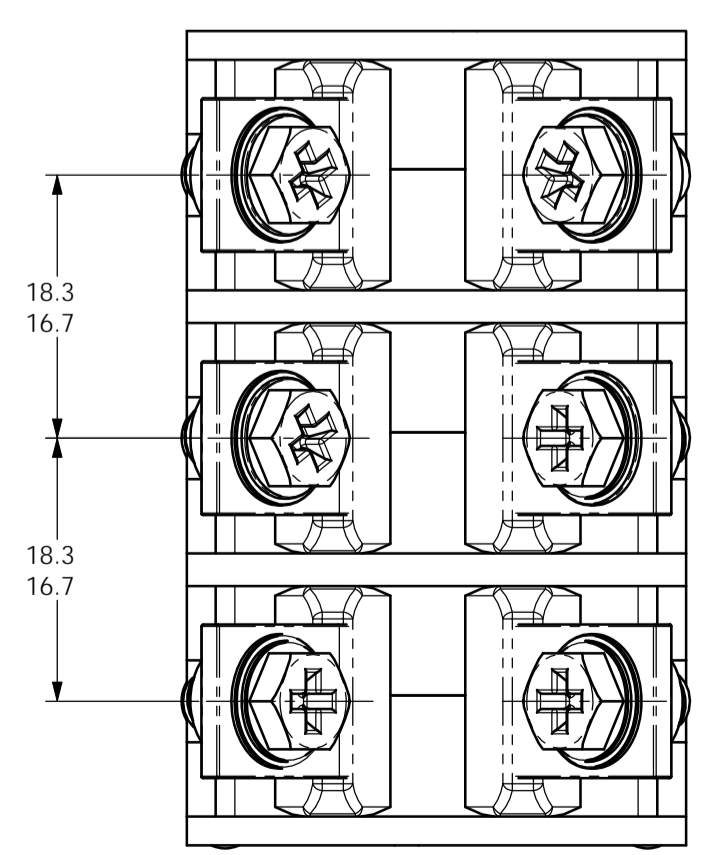
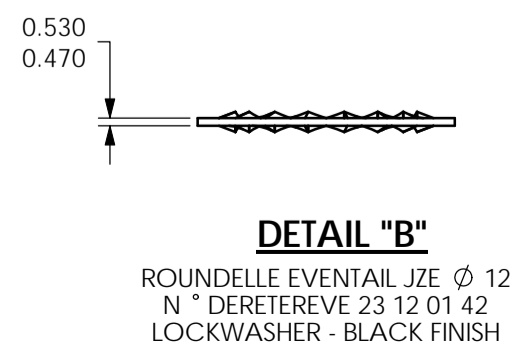
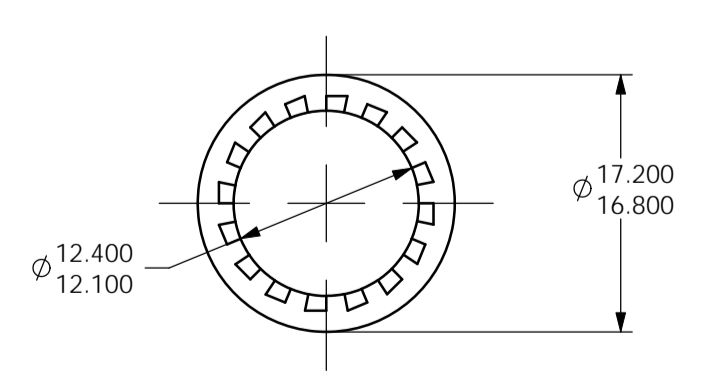
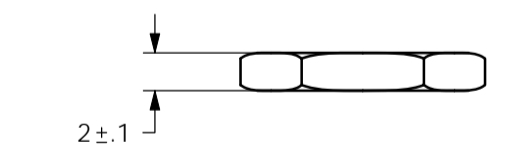
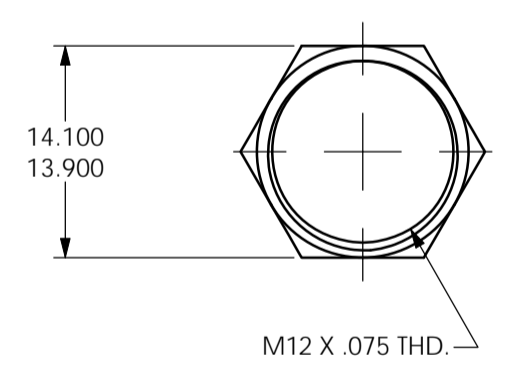
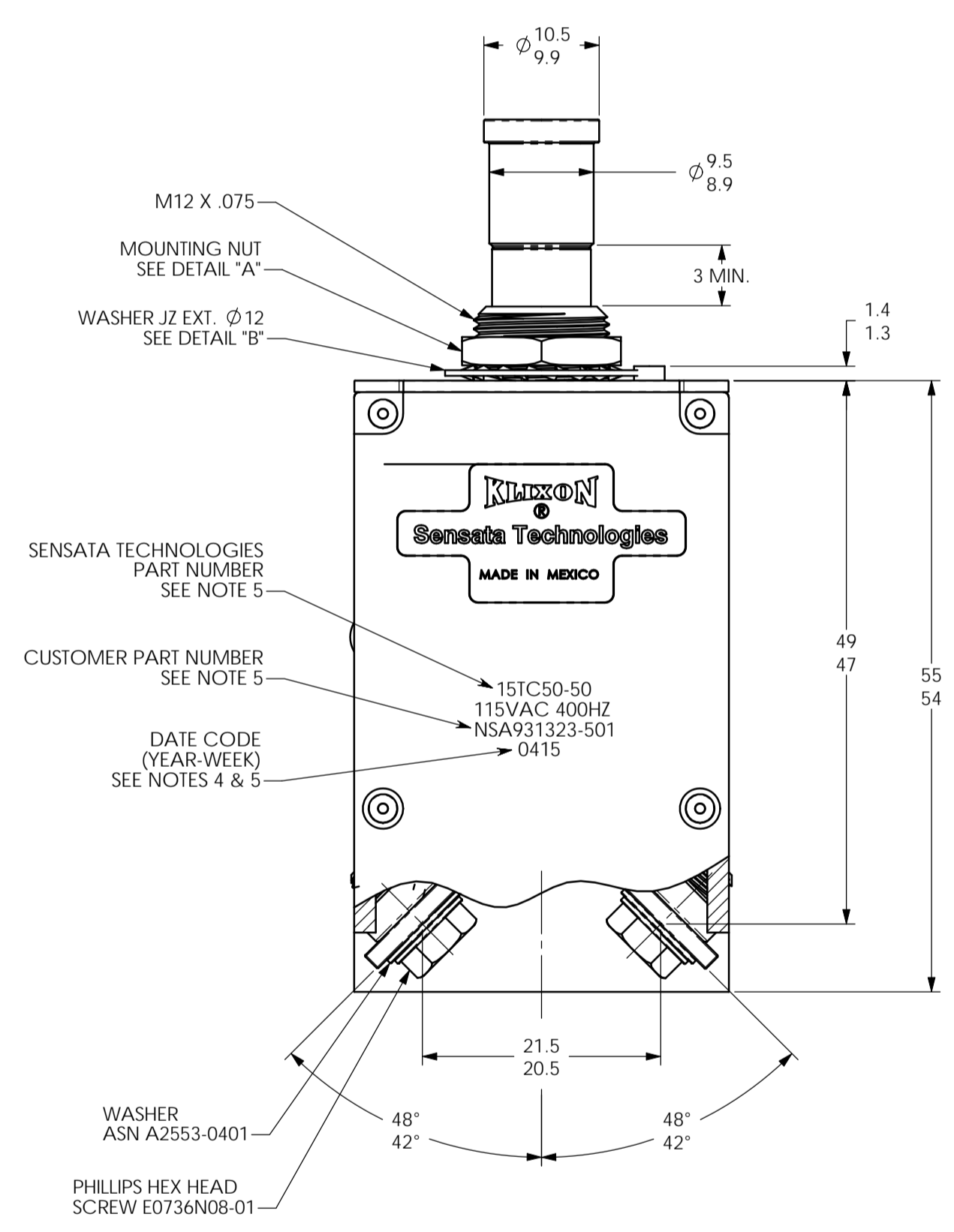
175.0 GRAMS (0.386 LBS.) MAX.	130.0 GRAMS (0.287 LBS.) NOMINAL
-------------------------------	----------------------------------

VOLTAGE DROP:

20 AMP	0.150 VOLTS MAX.
25 AMP	0.150 VOLTS MAX.
30 AMP	0.150 VOLTS MAX.
35 AMP	0.150 VOLTS MAX.
50 AMP	0.120 VOLTS MAX.

* SINGLE PHASE MAXIMUM ULTIMATE TRIP VALUES APPLY WITH OTHER TWO PHASES CARRYING 100% OF RATED CURRENT.

SENSATA PART NO.	CUSTOMER PART NO.	WITHOUT TERMINAL HARDWARE
151C50-20	NSA931323-200	NSA931323-200A
151C50-25	NSA931323-250	NSA931323-250A
151C50-30	NSA931323-300	NSA931323-300A
151C50-35	NSA931323-350	NSA931323-350A
151C50-50	NSA931323-501	NSA931323-501A



FOR REFERENCE ONLY. CHECK LATEST REVISION BEFORE USE. PARTS MADE TO THIS PRINT MUST CONFORM TO E9898 REV. E.

DRAWN W. BENTLEY/DP DATE 24-JUL-2004 ENGINEER W. BENTLEY DATE 24-JUL-2004 APPROVED RICH FERNANDES DATE 24-JUL-2004 APPROVED CARLOS REGALADO DATE 24-JUL-2004	SENSATA TECHNOLOGIES PROPRIETARY AND CONFIDENTIAL. NEITHER THIS PRINT NOR THE INFORMATION CONTAINED HEREON IS TO BE USED AGAINST THE INTERESTS OF SENSATA TECHNOLOGIES OR AGAINST THE INTERESTS OF ANY OF ITS AFFILIATED COMPANIES OR WHOLLY OWNED SUBSIDIARIES. UNLESS OTHERWISE SPECIFIED DIMENSIONS ARE IN MILLIMETERS TOLERANCES DECIMALS ANGLES DO NOT SCALE DRAWING THIRD ANGLE PROJECTION	529 PLEASANT STREET P.O. BOX 2964 ATTLEBORO, MA 02703 Sensata Technologies TITLE 151C CIRCUIT BREAKER PUSH PULL, TRIP FREE ENVELOPE DRAWING SIZE DWG NO. REV. A1 151C50 J SCALE 2:1 SOLIDWORKS SHEET 1 OF 1 DEVICE: 151C50 PROJECT: EX3636
---	---	--