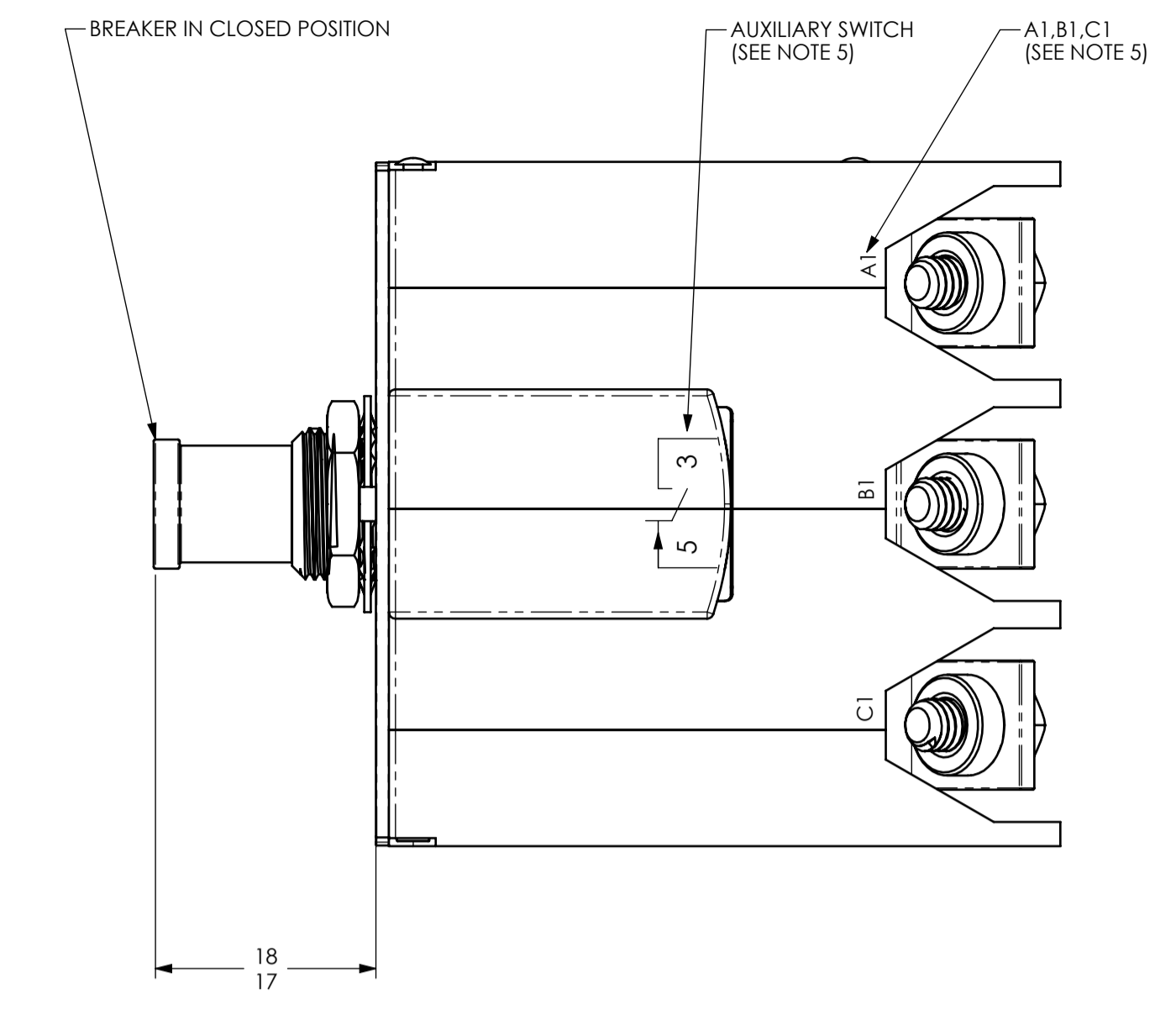
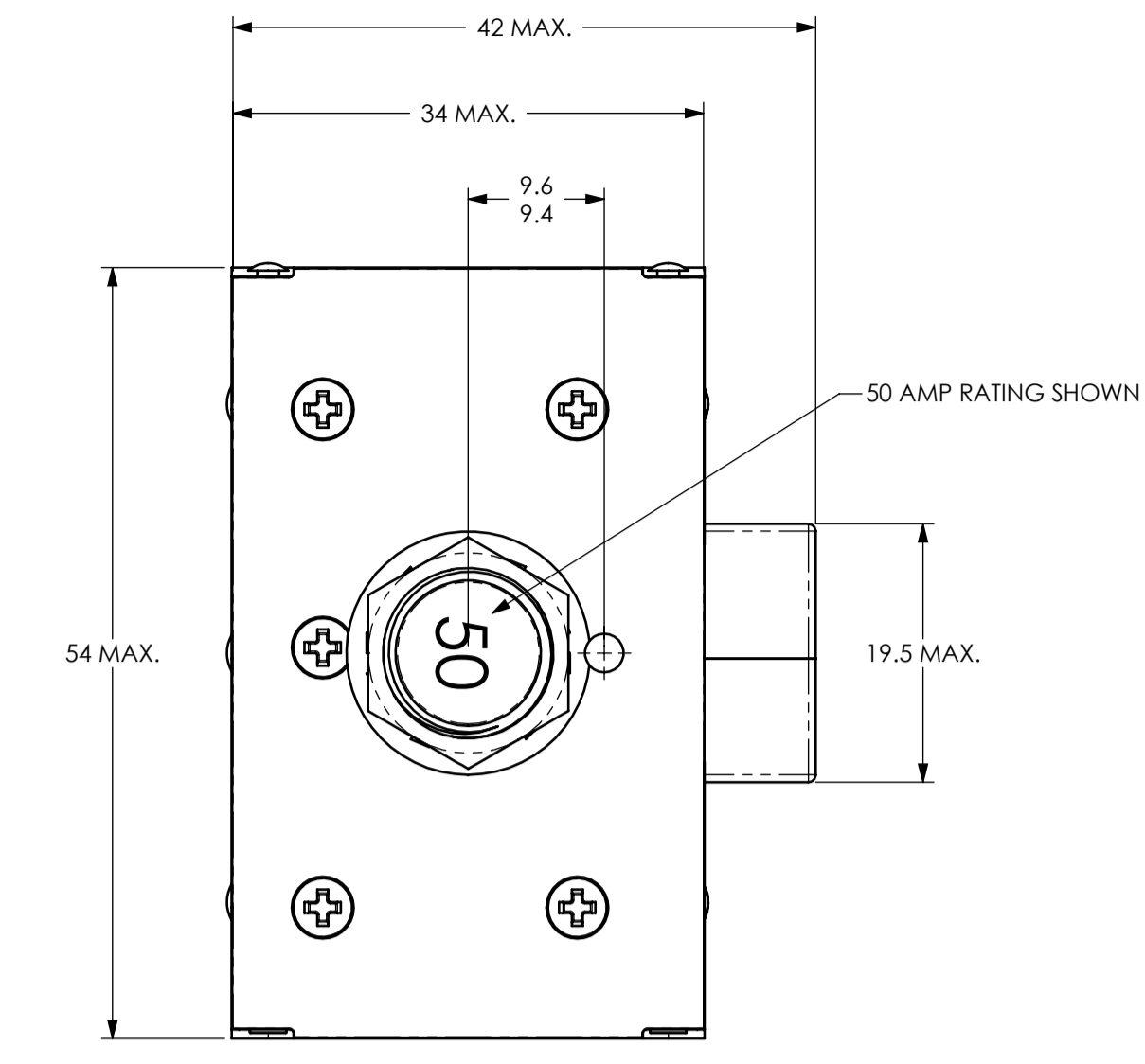
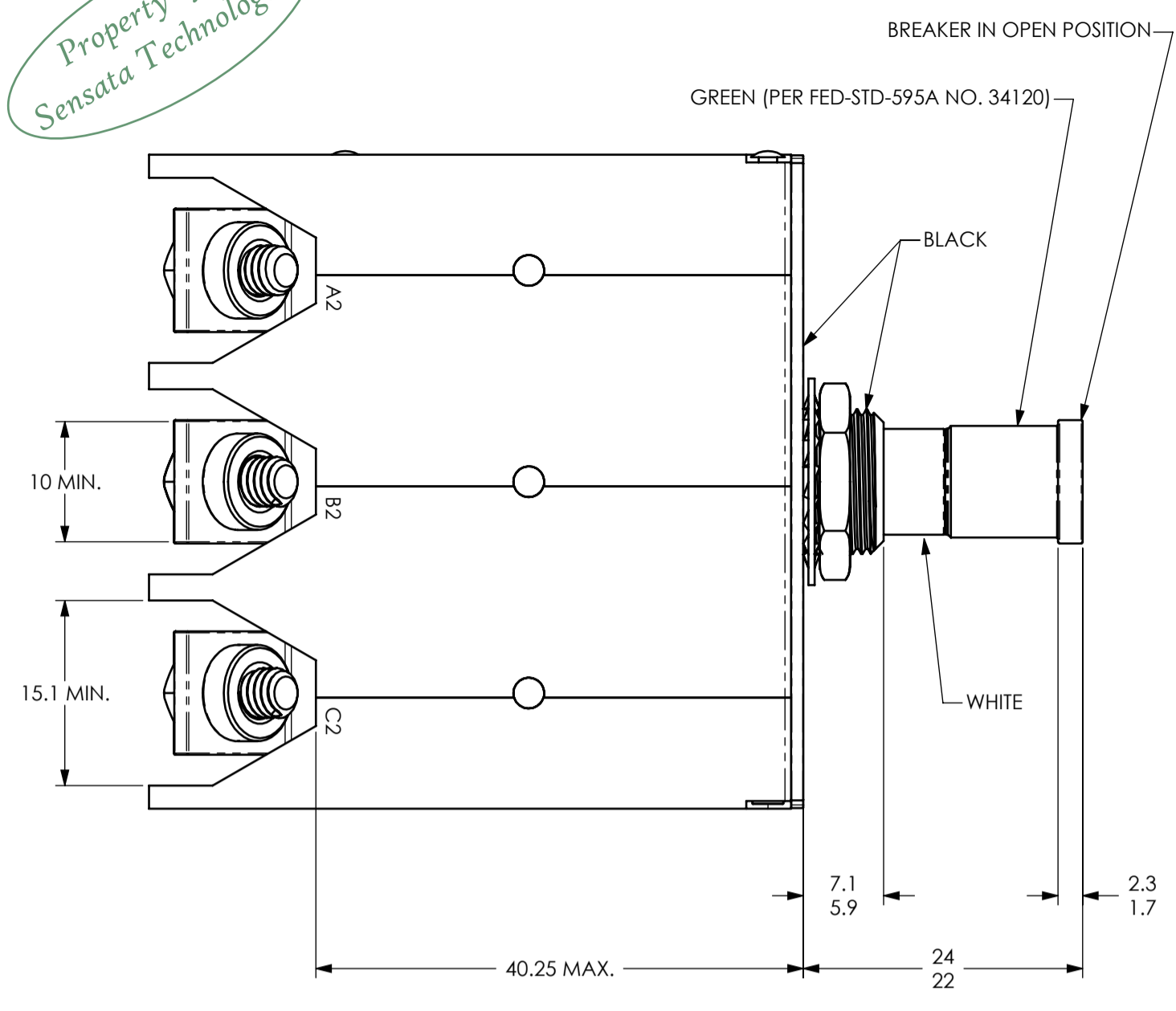


Property of  
Sensata Technologies



ZONE	REV.	REVISION DESCRIPTION	ECN NO.	DATE
B8	H	2+/- .1 DIMENSION WAS 2.6/2.4; PAF	ECN0046202	23-OCT-2008

- NOTES:
- EPOXY SURFACES ARE NON-DIMENSIONED. ENVELOPE DIMENSIONS DO NOT APPLY TO THESE PROJECTED EPOXY SURFACES.
  - TERMINAL AND MOUNTING HARDWARE MAY BE PACKAGED RATHER THAN INSTALLED.
  - COUNTRY OF ORIGIN IS SHOWN FOR ILLUSTRATION PURPOSES ONLY. COUNTRY OF ORIGIN TO BE IDENTIFIED AS REQUIRED.
  - DATE CODE PER 10588-285.
  - MARK IN APPROXIMATE POSITION SHOWN IN BLACK INK PER 12506-70.
  - VOLUME = 2.6888 CUBIC INCHES.
  - RECOMMENDED PIN CONTACT: GAUGE 20 PER EN3155-01/6M2018 OR EQUIVALENT.

### PERFORMANCE CHARACTERISTICS

DETAIL PERFORMANCE PER prEN3662-001 AND prEN3662-005.

VIBRATION	CURVE 'J' OF EUROCAE ED-14B, 3 G'S, 2000 HZ
MECHANICAL SHOCK	50 G'S
CORROSION	SALT SPRAY 48 HOURS
HUMIDITY	48 HOURS

ENDURANCE:	115/200 VAC MECHANICAL		360-800 HZ INDUCTIVE NO LOAD		2500 CYCLES 5000 CYCLES	
	MIN. ULT. TRIP	MAX. ULT. TRIP	200% (SEC.) 3 POLES / 1 POLE	500% (SEC.) 3 POLES / 1 POLE	1000% (SEC.) 3 POLES / 1 POLE	1000% (SEC.) 3 POLES / 1 POLE
SINGLE * OR THREE PHASE CALIBRATION:	20 AMP THRU 50 AMP					
+23°C (+73°F)	110% RATING	145% RATING	2-20 / 2-22	0.15-4.0 / 0.15-5.2	0.05-1.0 / 0.06-1.3	0.05-1.0 / 0.06-1.3
+70°C (+158°F)	105% RATING	145% RATING				
+90°C (+194°F)	100% RATING	145% RATING				
-55°C (-67°F)	110% RATING	165% RATING	≥1.5 / ≥1.5	0.15-4.0 / 0.15-5.2	0.05-1.0 / 0.06-1.3	0.05-1.0 / 0.06-1.3

SHORT CIRCUIT RESISTANCE: 20 AMP THRU 50 AMP 115 VAC, 400 HZ 2000 AMPS RMS

OPERATIONAL FORCES:  
PULL OUT 5 - 45 N (1.1 - 10.1 LBS.)  
RESET 20 - 80 N (4.5 - 18 LBS.)

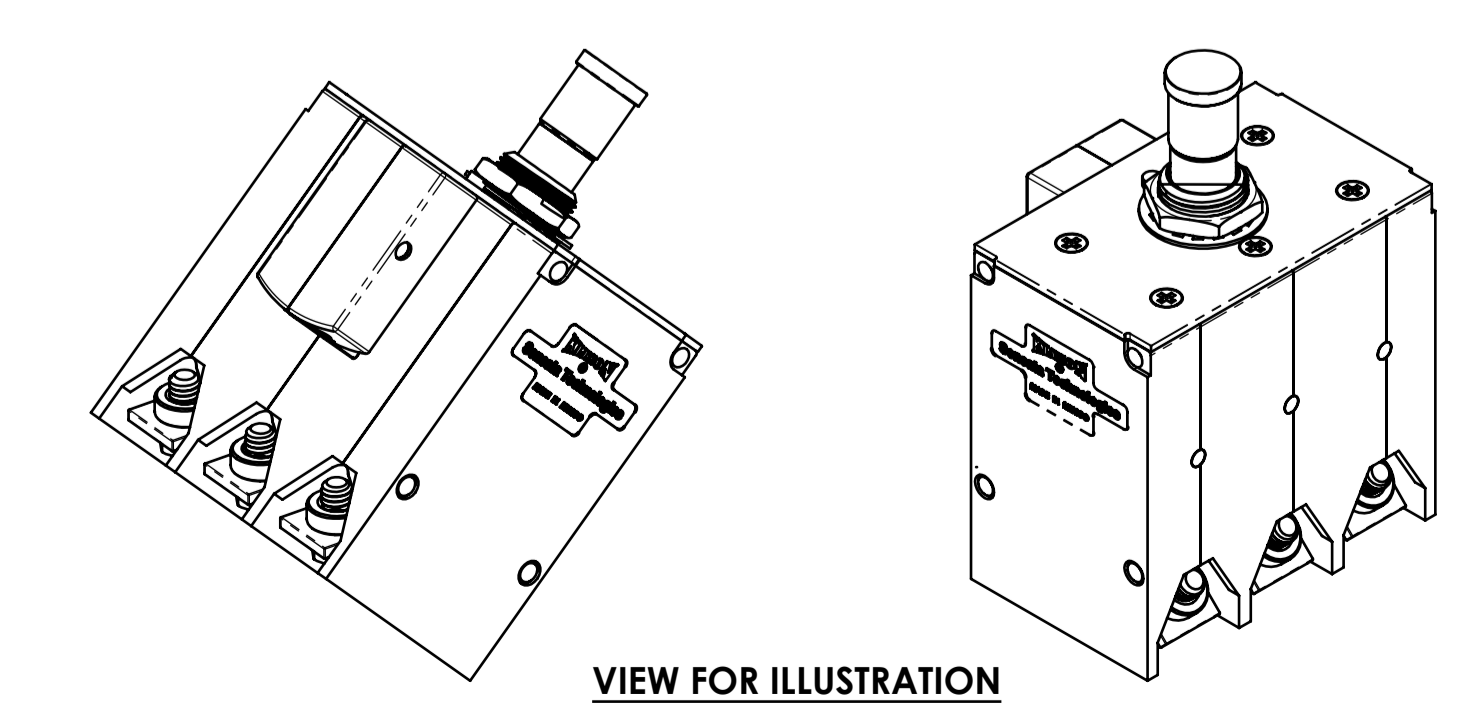
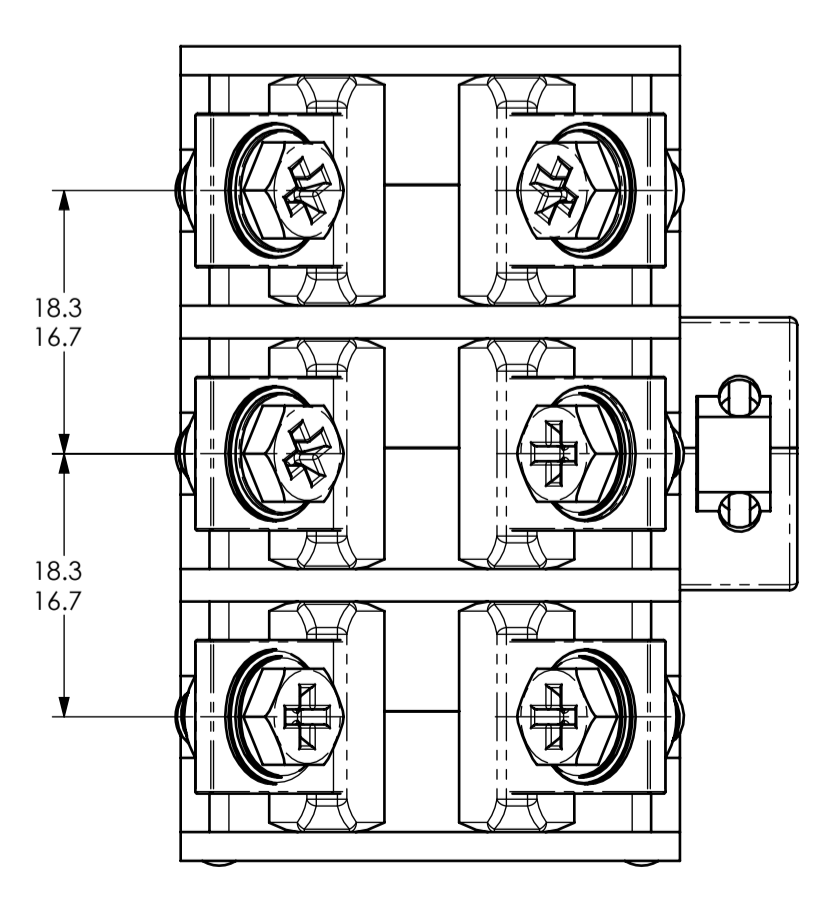
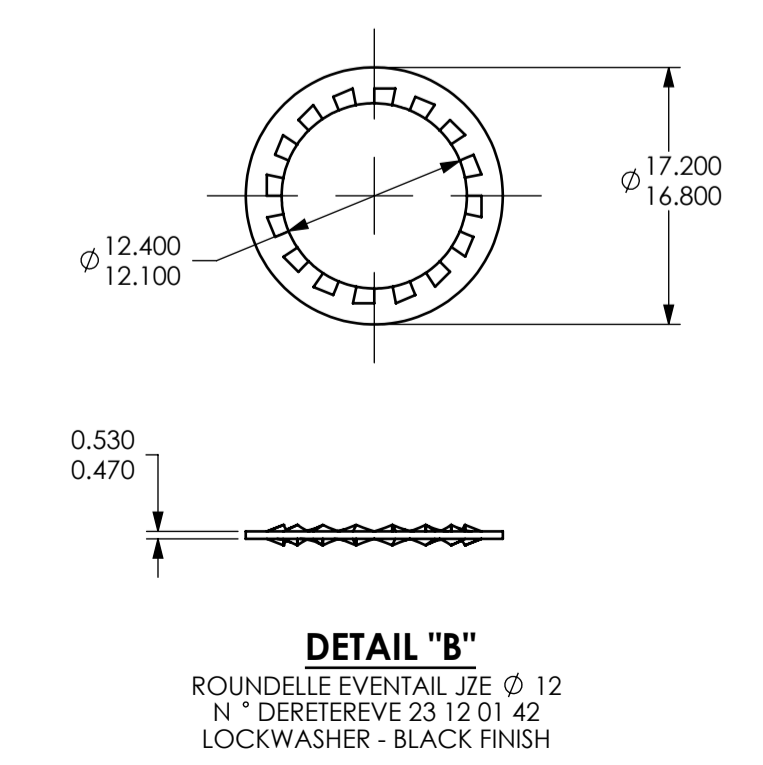
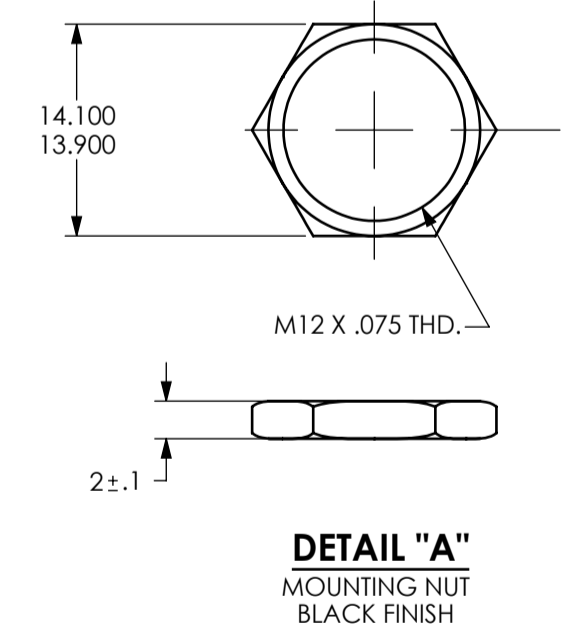
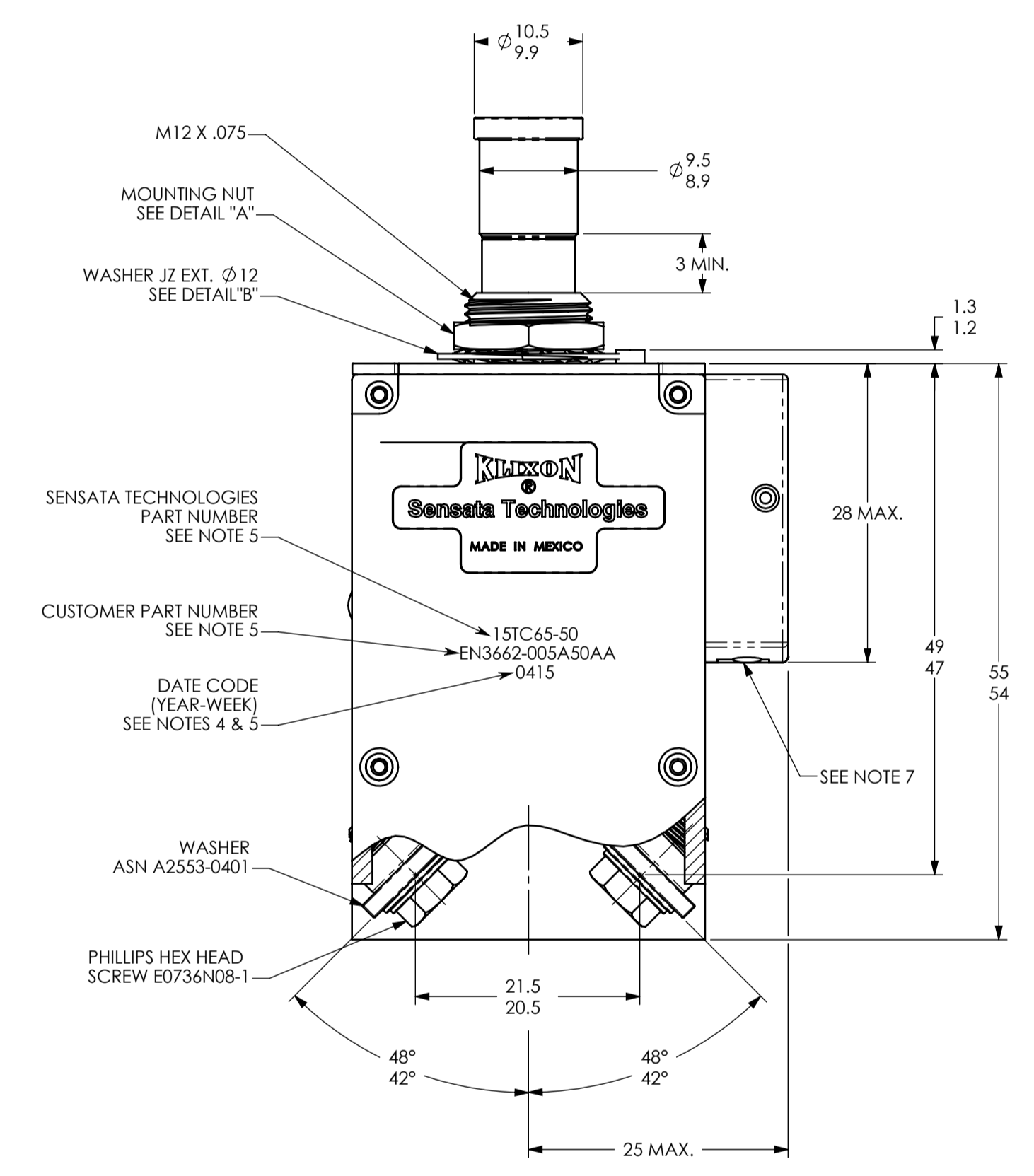
OPERATING ALTITUDE: 15,000 M (49,200 FT.)

WEIGHT INCLUDING CONNECTION HARDWARE: 185.0 GRAMS (0.386 LBS.) MAX.  
140.0 GRAMS (0.287 LBS.) NOMINAL

VOLTAGE DROP:	20 AMP	25 AMP	35 AMP	50 AMP
	0.150 VOLTS MAX.	0.150 VOLTS MAX.	0.150 VOLTS MAX.	0.120 VOLTS MAX.

\* SINGLE PHASE MAXIMUM ULTIMATE TRIP VALUES APPLY WITH OTHER TWO PHASES CARRYING 100% OF RATED CURRENT.

SENSATA TECHNOLOGIES PART NO.	CUSTOMER PART NO. WITH TERMINAL HARDWARE	CUSTOMER PART NO. WITHOUT TERMINAL HARDWARE
15TC65-20	EN3662-005A20AA	EN3662-005A20AB
15TC65-25	EN3662-005A25AA	EN3662-005A25AB
15TC65-35	EN3662-005A35AA	EN3662-005A35AB
15TC65-50	EN3662-005A50AA	EN3662-005A50AB



FOR REFERENCE ONLY. CHECK LATEST REVISION BEFORE USE. PARTS MADE TO THIS PRINT MUST CONFORM TO E9898 REV. E.

DRAWN: WILLIAM BENTLEY/DP  
DATE: 28-JUN-2004

ENGINEER: WILLIAM BENTLEY  
DATE: 28-JUN-2004

APPROVED: RICK FERNANDES  
DATE: 28-JUN-2004

APPROVED: CARL REGALADO  
DATE: 28-JUN-2004

SENSATA TECHNOLOGIES PROPRIETARY AND CONFIDENTIAL. NEITHER THIS PRINT NOR THE INFORMATION CONTAINED HEREON IS TO BE USED AGAINST THE INTERESTS OF SENSATA TECHNOLOGIES OR AGAINST THE INTERESTS OF ANY OF ITS AFFILIATED COMPANIES OR WHOLLY OWNED SUBSIDIARIES.

UNLESS OTHERWISE SPECIFIED DIMENSIONS ARE IN MILLIMETERS  
TOLERANCES DECIMALS ANGLES

DO NOT SCALE DRAWING  
THIRD ANGLE PROJECTION

529 PLEASANT STREET  
P.O. BOX 2964  
ATTLEBORO, MA 02703

**Sensata Technologies**

TITLE: 15TC CIRCUIT BREAKER PUSH PULL TRIP FREE ENVELOPE DRAWING

SIZE: A1 DWG NO.: 15TC65 REV.: H

SCALE: 1:1 SOLIDWORKS SHEET 1 OF 1

DEVICE: 15TC65 PROJECT: EX3636