

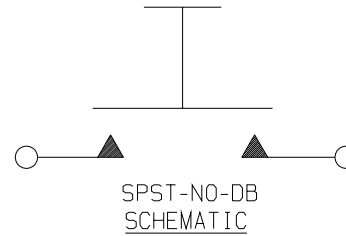
PI-90024

CHARACTERISTICS PER MIL-S-8805/3

LET	ECN #	DATE	APR
A	922205	08 JUN 92	HR
B	950714	23 FEB 95	RE
C	984432	17 DEC 98	RE

ELECTRICAL:

RATINGS:	SEA LEVEL		50,000 FT.
LOAD	28VDC	115VDC	28 VDC
RESISTIVE	10 AMPS	10 AMPS	_____
INDUCTIVE	5 AMPS	5 AMPS	5 AMPS
LAMP	3 AMPS	3 AMPS	_____
DWV	1050 VRMS		400 VRMS



ELECTRICAL LIFE: 25,000 CYCLES

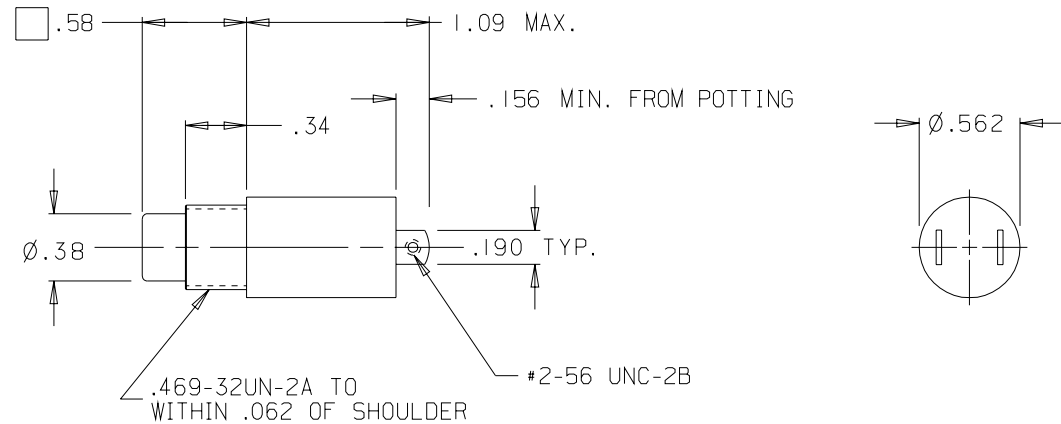
MECHANICAL:

TOTAL TRAVEL: .085 ±.015 ☒  
 OVER TRAVEL: .012 MIN. ■ (C)  
 RESET TRAVEL: .012 MIN. ■  
 MOVEMENT DIFFERENTIAL: .015 MIN. ☒  
 OPERATING FORCE: 4.0±1.0 LBS.  
 RESET FORCE: 1.0 LB. MIN.  
 MECHANICAL LIFE: 250,000 CYCLES

PHYSICAL:

TEMPERATURE RANGE: -55°C TO +85°C  
 ENCLOSURE DESIGN: WATERTIGHT PER MIL-S-8805 DESIGN 3

BUTTON: RED NYLON  
 CASE: BLACK ANODIZED ALUMINUM ALLOY  
 MARK: OTTO 21649  
 PI-90024 &  
 DATE CODE (YYWW)



HARDWARE:

HEX NUT & LOCKWASHER

OTTO CONTROLS  
 DIVISION OF  
 OTTO ENGINEERING INC.  
 CARPENTERSVILLE, ILLINOIS USA

PART NAME  
 PUSHBUTTON SWITCH  
 .47 THD.

☐ MINOR ☒ MAJOR ■ CRITICAL ▲ SPC CRITICAL

UNLESS OTHERWISE SPECIFIED:  
 DIMENSIONS ARE IN INCHES.  
 TOLERANCES ARE AS LISTED.  
 MUST BE FREE FROM BURRS  
 AND SHARP EDGES.

TOLERANCES  
 .XX ±.03  
 .XXX ±.010  
 ANGLES ±2°  
 DO NOT SCALE DRAWING.  
 THIRD ANGLE PROJECTION

THIS DOCUMENT IS THE CONFIDENTIAL  
 PROPERTY OF OTTO ENGINEERING, INC..  
 IT IS PROVIDED ON A RESTRICTED  
 BASIS AND IS NOT TO BE USED IN ANY  
 WAY DETRIMENTAL TO THE INTERESTS  
 OF OTTO ENGINEERING, INC..

DRWN. SH	SIZE	FSCM NO	DRAWING NO.	REV.
CHKD. HR	A	21649	PI-90024	C
APPD. MGC	DATE 08 JUN 92	WT.	SCALE 1:1	SHEET 1 OF 1