

NOTES:

- DRAWING TO BE INTERPRETED IN ACCORDANCE WITH THE CURRENT REVISION OF ASME Y14.5M.
 - THIS PART/PRODUCT IS TO BE MANUFACTURED WITH THE APPLICABLE REGULATIONS OF EC DIRECTIVES 2002/95/EC AND 2002/96/EC, RESTRICTION OF THE USE OF HAZARDOUS SUBSTANCES IN ELECTRICAL AND ELECTRONIC EQUIPMENT (ROHS) AND WASTE ELECTRICAL AND ELECTRONIC EQUIPMENT (WEEE).
- ▲ DUSTTIGHT SEE ENCLOSURE DESIGN CHARACTERISTICS
 ▲ WATERTIGHT SEE ENCLOSURE DESIGN CHARACTERISTICS
 ▲ DUSTTIGHT SEE ENCLOSURE DESIGN CHARACTERISTICS

CHARACTERISTICS

ELECTRICAL:

STANDARD RATINGS AT 28 VDC & 115 VAC
 RESISTIVE: 10 AMPS
 INDUCTIVE: 5 AMPS
 LAMP: 3 AMPS
 ELECTRICAL LIFE: 100,000 CYCLES
 OR
 LOW LEVEL RATINGS
 RESISTIVE: 10 MILLIAMPERES AT 30 MILLIVOLTS
 INDUCTIVE: 10 MILLIAMPERES AT 30 MILLIVOLTS
 ELECTRICAL LIFE: 25,000 CYCLES

AGENCY:

UL RECOGNIZED COMPONENT
 UL 1500 IGNITION PROTECTED

MECHANICAL:

TOTAL TRAVEL: .085 ± .015
 OVERTRAVEL: .012 MIN.
 RESET TRAVEL: .012 MIN.
 MOVEMENT DIFFERENTIAL: .015 MIN.
 OPERATING FORCE: 1. 2.5 ± 0.5 LBS. OPERATE FORCE
 0.75 LB. MIN. RESET FORCE
 2. 4.0 ± 1.0 LBS. OPERATE FORCE
 1.0 LB. MIN. RESET FORCE
 MECHANICAL LIFE: 1,000,000 CYCLES

PHYSICAL:

BUTTON: THERMOPLASTIC (SEE CHART)
 CASE: ANODIZED ALUMINUM ALLOY (SEE CHART)
 ENCLOSURE DESIGN: (SEE CHART), UNSEALED
 ▲ DUSTTIGHT: DUSTTIGHT/PROTECTED AGAINST SPLASHING WATER PER IP64
 ▲ WATERTIGHT: WATERTIGHT PER IP68S, 1 METER
 ▲ DUSTTIGHT: DUSTTIGHT PER MIL-PRF 8805; DESIGN 2
 TEMPERATURE RANGE: -55°C TO +85°C

MARKING:

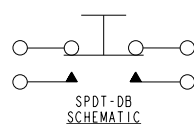
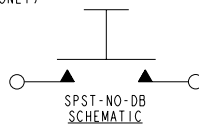
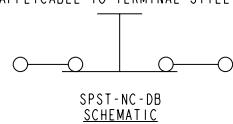
P8-6-____C (SEE CHART)
 & DATE CODE (YYWW)

MOUNTING HARDWARE:

HEX NUT, LOCKWASHER, & PANEL SEAL
 (NO PANEL SEAL PROVIDED ON UNSEALED VERSIONS)

TERMINAL HARDWARE:

SCREWS, LOCKWASHER, & TERMINAL LUGS
 (APPLICABLE TO TERMINAL STYLE 2 & 5 ONLY)



■ MANUFACTURING
 ▲ SPC

UNLESS OTHERWISE SPECIFIED: DIMENSIONS ARE IN INCHES. TOLERANCES: .XX ±.03 .XXX ±.010 ANGLES ±2° DO NOT SCALE



THIS DOCUMENT IS THE CONFIDENTIAL PROPERTY OF OTTO ENGINEERING, INC.. IT IS NOT TO BE USED IN ANY WAY DETRIMENTAL TO THE INTERESTS OF OTTO ENGINEERING, INC..

DESCRIPTION

P8, PUSHBUTTON SWITCH, "F" STYLE CASE, "C" BUTTON

DRWN. JFC	SIZE	FSCM NO	DRAWING NO.	REV.
CHKD. JFC	B	21649	P8-6-____C	B
APPD. RTK				
WT.	THIRD ANGLE PROJECTION	Scale 2:1	Sheet 1 OF 1	

P8-6-____C

REV	OCN #	DATE	APR
A	047315	13 FEB 09	REO
B	048099	30 MAR 09	REO



FASTON TERMS.
SCALE 1:2



STANDARD TERMS.
SCALE 1:2

