

CHARACTERISTICS

ELECTRICAL

CIRCUIT: SINGLE POLE, 4 THROW, CENTER OFF  
 MOMENTARY CONTACT (SELF RETURN TO CENTER OFF.)  
 RATINGS: 1 AMP AT 28 VDC FOR 100,000 CYCLES  
 OVERLOAD: 2 AMP INDUCTIVE AT 28 VDC FOR 100 CYCLES  
 DWV: 1050 VRMS

MECHANICAL

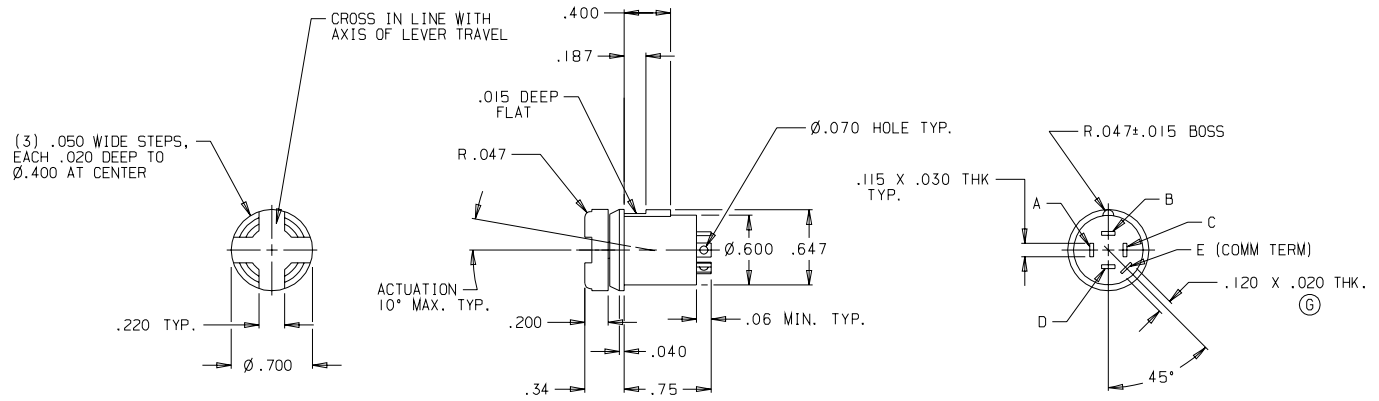
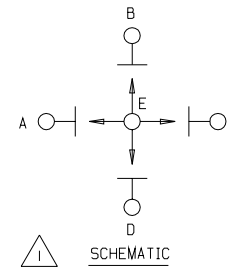
SWITCH ACTION SHALL BE SMOOTH, NO SNAP ACTION.  
 LEVER TRAVEL: 15° MAX. FROM CENTER OFF.  
 ACTUATING FORCE: 16 OZ. ±6 OZ.  
 LEVER PIVOT & STOP STRENGTH: SWITCH MUST BE G  
 CAPABLE OF WITHSTANDING A FORCE OF 25 LBS  
 APPLIED TO THE ACTUATING BUTTON. THE BUTTON  
 SHALL ALSO WITHSTAND A 15 LB MINIMUM PULL FORCE.

PHYSICAL

BUTTON: BLACK NYLON  
 HOUSING: BLACK RYTON  
 ENCLOSURE: (RESILIENT) DESIGNED TO MEET  
 THE REQUIREMENTS OF METHOD 112, MIL-STD-202  
 AND MEETS ENVIRONMENTAL TESTING OF MIL-S-9419

MARK: OTTO 21649 T4-0043  
 M9419/2-002  
 TERMINAL IDENTIFICATION  
 & DATE CODE

T4-0043			
LET	OCN	DATE	APR
G	964243	05 NOV 96	DR



NOTES:

1 CONTACT MADE IN OPPOSITE DIRECTION OF LEVER TRAVEL.

- MINOR
- MAJOR
- CRITICAL
- SPC CRITICAL

UNLESS OTHERWISE SPECIFIED: DIMENSIONS ARE IN INCHES. TOLERANCES: .XX ±.03 .XXX ±.010 ANGLES ±2° DO NOT SCALE

THIRD ANGLE PROJECTION

OTTO CONTROLS  
 DIVISION OF  
 OTTO ENGINEERING INC.  
 CARPENTERSVILLE, ILLINOIS USA

THIS DOCUMENT IS THE CONFIDENTIAL PROPERTY OF OTTO ENGINEERING, INC.. IT IS PROVIDED ON A RESTRICTED BASIS AND IS NOT TO BE USED IN ANY WAY DETRIMENTAL TO THE INTERESTS OF OTTO ENGINEERING, INC..

PART NAME  
 SWITCH, 4-WAY TOGGLE

DRWN. CC	SIZE	FSCM NO	DRAWING NO.	REV.
CHKD. DR	B	21649	T4-0043	G
APPD. RG				
DATE 05 NOV 96	WT. 10 GRAMS APPX	SCALE 1:1	SHEET 1 OF 1	