



# ELECTRIC VEHICLE CHARGING STATIONS

**Reliable Connectivity  
That Leads the Charge**

## **Empower EVSE Networks With Superior Functionality**

- Robust, high-RF performance portfolio for today's EV charging requirements.
- Fast, reliable service at any level and in any environment.
- Open access solutions designed to support your specific needs.



# Expand Your EVSE Capabilities

Innovative wireless antenna solutions from PCTEL® ensure the critical cloud connectivity that is indispensable to modern EVSE infrastructure.

- Provide utilization data to analyze driver behavior, determine infrastructure needs, make pricing decisions, and more.
- Allow payment flexibility at the point of sale and for options such as mobile, tap-to-charge, and credit card payment by phone.
- Reduce service visits with 24/7/365 remote monitoring, diagnostics, troubleshooting, maintenance, and customer support.



## BUILT FOR EVERY LEVEL OF PERFORMANCE

PCTEL wireless antennas are designed to address the challenges of all levels of charging stations. They can withstand the toughest work environments. Waterproof, dust-proof, and vandal-proof, our antennas are IP6K9K-Rated and process and production audited by some of the world's largest OEMs.

Charger Level	Current Type	Voltage (V)	Power (kW)	Avg. Charging Time/250 miles	Typical Installation Locations
1	AC	120	2.4	43 hours	Homes/Residential
2	AC	240	3-19	11 hours	Urban Areas, Shopping Centers
3	DC	Around 500	50-350	60 minutes	Urban Areas, Off Highway
4	DC	800-1,000	>1,000	20 minutes	Urban Areas, Off Highway

### Smarteq™ AllDisc

- Product family capable of handling up to 4-in-1 antenna functions
- LTE, 5G, NB-IoT, LTE-CatM
- 617-960MHz, 1710-2690MHz, 3300-3800MHz
- High radiation gain/efficiency
- Hole or wall mounted on metal



### Smarteq™ AllDisc-S

- Smaller footprint than AllDisc capable of up to 3-in-1 antenna functions
- Cellular 2G/3G/4G/5G
- 617-960MHz, 1710-2690MHz, 3300-3800MHz
- 2x MIMO for Wi-Fi 2/5/6GHz
- Discreet design with center screw installation



### MLPV Max

- 5G Cellular, Wi-Fi 6E, Bluetooth®
- 600 MHz to 7.1 GHz
- High radiation gain/efficiency
- Low profile design
- Hole mounted on metal



### Smarteq™ LP70x

- LTE, NB-IoT, LTE-CATM
- Cellular 2G/3G/4G
- 698-960MHz, 1710-2690MHz
- Screw or hole mounted on metal or nonconductive surfaces
- Available in black or grey



### Smarteq™ SmartBlade/MiniBlade

- Adhesive mounted antennas
- Ideal for concealed installations on nonconductive surfaces such as plastic
- LTE, 5G, NB-IoT, LTE-CatM
- SmartBlade: Cellular 2G/3G/4G/5G
- MiniBlade: WiFi7/CBRS
- 698-960MHz, 710-2690MHz, 3400-3800-MHz
- Slim and flexible
- Available in black or grey



### Smarteq™ SmartDisc™

- Cellular 2G/3G/4G/5G
- 698-960MHz, 1710-2690MHz
- Screw, hole, or wall mounted on metal or nonconductive surfaces
- Available in black or grey



## CONNECTIVITY COUNTS ON PCTEL

Antennas are the center of the EV ecosystem, which consists of energy providers, service providers, EVSE point operators, EV manufacturers, and EV drivers. If connectivity is lost, functionality is lost, along with customers and revenue.

PCTEL EV charging antennas use dynamic load balance to fine-tune the frequency of conducted signals. That means fast, reliable connectivity in any setting: rural or urban, on the coast or in the desert, at home, in town, or on the roadside.



## TIME-TESTED ON TOUGH OPERATIONS WORLDWIDE

PCTEL antennas have a long history of proven performance in applications such as agriculture, utilities, and industrial fleets.

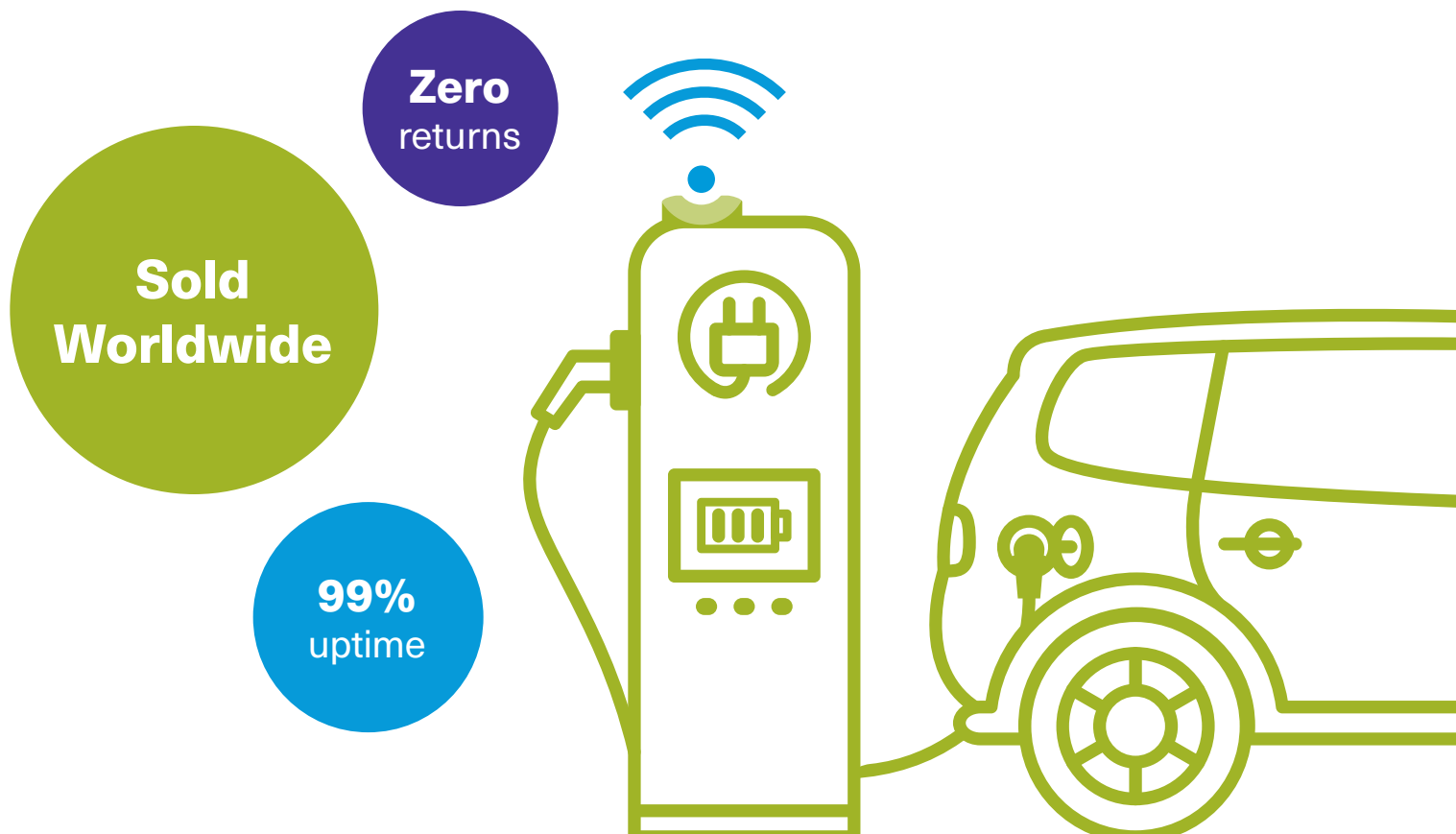
We have a global presence and are renowned for our scientific and technological expertise.

Our flexible and capable development team can customize or create a completely new antenna according to your criteria for:

- Connectivity type
- Color
- Mounting material
- Equipment footprint



PCTEL provides EV charging antennas to market-leading EVSE integrators globally. We have shipped thousands of antennas. None have been returned.



## STAY CONNECTED WITH THE RIGHT WIRELESS SOLUTION

Gains in efficiency, safety, and security can only be realized if your devices stay connected. Getting your equipment, devices, and workforce communicating should not be left to just any wireless provider. You need a partner whose core focus is rugged wireless radio solutions for mission-critical and business-critical organizations. We understand how to build reliable wireless performance into your EV charging operations and help you transform your enterprise efficiencies.

### Wireless Expertise

Our skilled RF and mechanical design teams offer decades of experience solving wireless challenges.

### Unique Design

We identify new ways to design products so organizations can communicate better.

### Quality Built In

We ensure total RF system performance through the entire design and development cycle, from planning to production.

### Customer Relationships

We work side by side with our customers to create purpose-built solutions with advanced wireless designs.

### Peace of Mind

We provide warranty assurance that our products are free from defects in material and workmanship, taking the risk out of your wireless development network.

### Solving Complex Wireless Challenges

PCTEL is a leading global provider of wireless technology solutions, including purpose-built Industrial IoT devices, antenna systems, and test and measurement products. Trusted by our customers for 29 years, we solve complex wireless challenges to help organizations stay connected, transform, and grow.

For more information, please visit our website at

> [pctel.com/solutions/electric-vehicle-charging](https://pctel.com/solutions/electric-vehicle-charging)



**PCTEL, Inc.**

T: +1 630 372 6800 | [pctel.com](https://pctel.com) | NASDAQ: PCTI